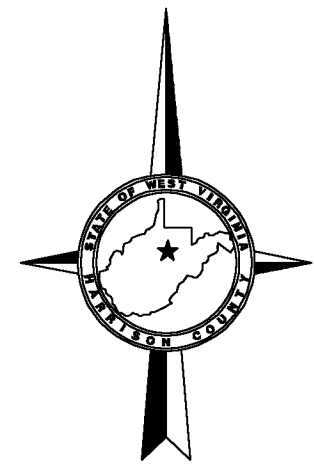
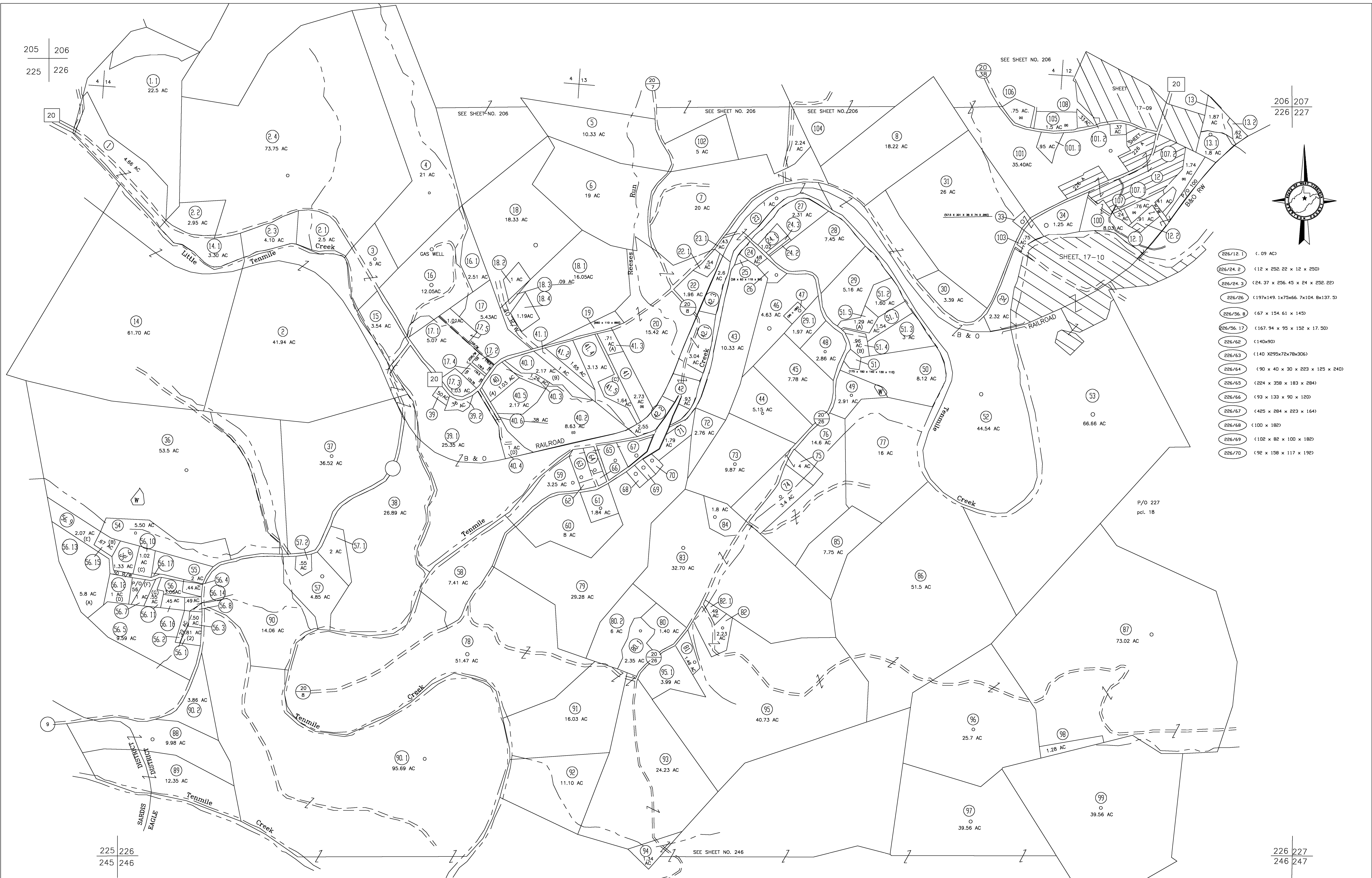


205 | 206  
225 | 226

206 | 207  
226 | 227



- 226/12.1 (1.09 AC)
- 226/24.2 (12 x 252.22 x 12 x 250)
- 226/24.3 (24.37 x 256.45 x 24 x 252.22)
- 226/26 (197x149.1x75x66.7x104.8x137.5)
- 226/36.8 (67 x 154.61 x 145)
- 226/36.17 (167.94 x 95 x 152 x 17.50)
- 226/62 (140x90)
- 226/63 (140 X295x72x78x306)
- 226/64 (90 x 40 x 30 x 223 x 125 x 240)
- 226/65 (224 x 358 x 183 x 284)
- 226/66 (93 x 133 x 90 x 120)
- 226/67 (425 x 284 x 223 x 164)
- 226/68 (100 x 182)
- 226/69 (102 x 82 x 100 x 182)
- 226/70 (92 x 158 x 117 x 192)

225 | 226  
245 | 246

226 | 227  
246 | 247

For Tax Purposes Only

**CHERYL L. ROMANO**  
**HARRISON COUNTY ASSESSOR**

LEGEND	
Property line	—————
Edge of pavement or roadway	—————
Corporation line	—————
District line	—————
County line	—————
Original lot line	—————
Deed lot number	(15)
Parcel or Index number	XX
Improvement	o
Railroad	—————
Church	+
Cemetery	Δ
Golf Course	δ
School	⊕

REVISIONS	
1	
2	
3	
4	
5	
6	
7	
8	

**RESTRICTION**

All tax maps created under the provisions of reappraisal legislation are the property of Harrison County West Virginia and the reproduction, copying distribution or sale of such tax maps or any copies thereof without the written permission of the Harrison County Assessor is prohibited by law.

KEY MAP		
205	206	207
225	226	227
245	246	247

**HARRISON COUNTY**  
**STATE OF WEST VIRGINIA**  
**Office of Assessor**

DISTRICT  
EAGLE  
MAP NO:  
226

Date, Aerial Photography: April 1960 Date, Map: Sept. 1960  
Photo No: Scale: 1" = 400'