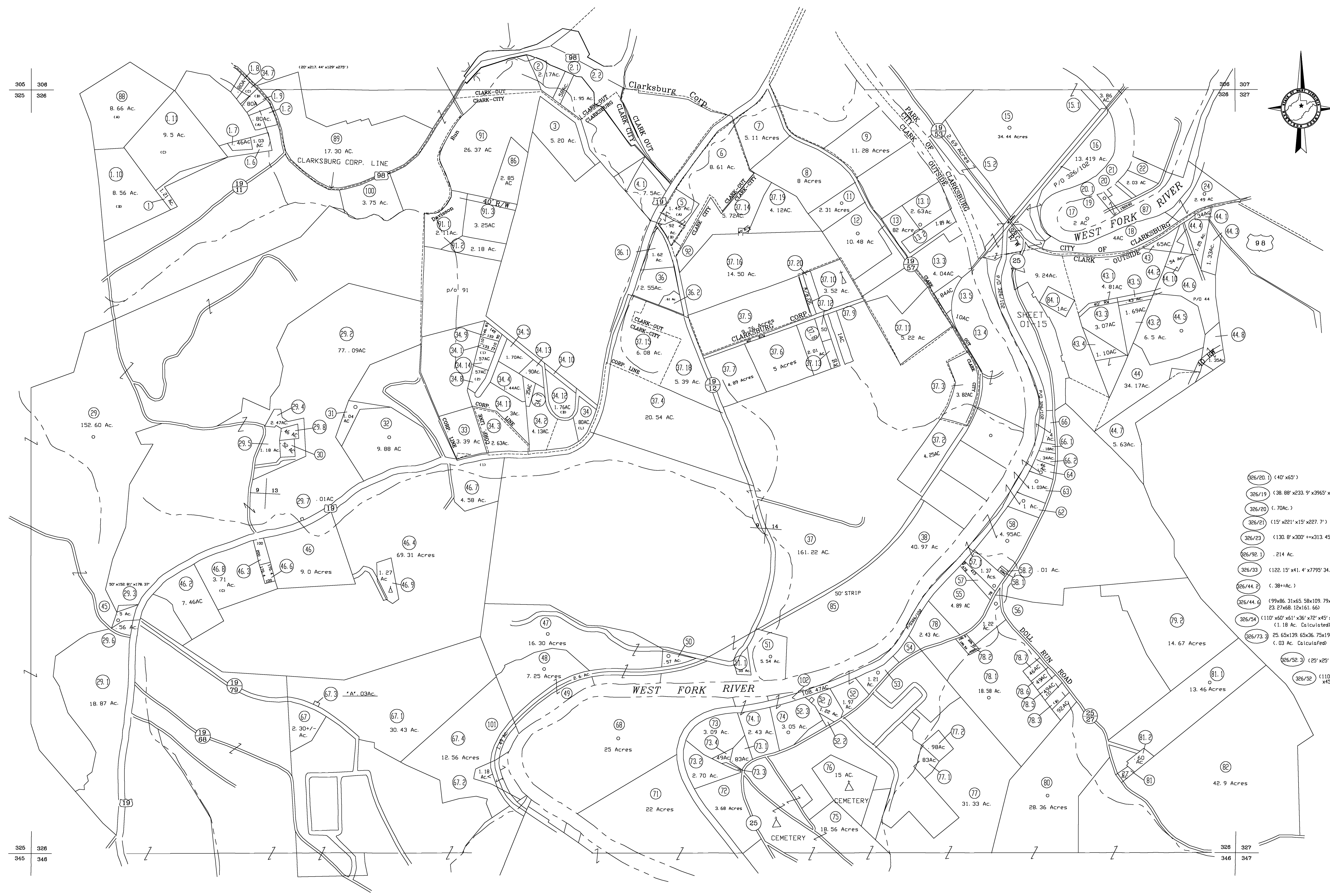
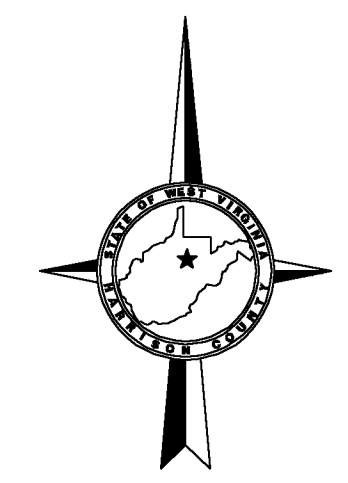


305 306
325 326

325 326
345 346



- (26/20.1) (40' x 65')
- (36/19) (.38, .08' x 233.9' x 3965' x 235.4')
- (36/20) (.70Ac.)
- (36/21) (15' x 221' x 15' x 227.7')
- (36/23) (130.8' x 300' + x 313.45')
- (36/92.1) .214 Ac.
- (36/33) (122.15' x 41.4' x 7795' 34.84')
- (36/44.2) (.38+Ac.)
- (36/44.6) (.99 x .86, 31 x 65, 58 x 109, 79 x 27, 25 x 23, 27 x 68, 12 x 151, 66)
- (36/94) (110' x 60' x 61' x 36' x 72' x 45' x 53' 66' x 103' (1.18 Ac. Calculated)
- (36/73.3) 25.65 x 139.65 x 36.75 x 199.97 (.03 Ac. Calculated)
- (36/92.3) (25' x 25')
- (36/92) (110 x 60 x 61 x 36 x 72 x 45 x 53 x 66 x 103)

For Tax Purposes Only

CHERYL L. ROMANO
HARRISON COUNTY ASSESSOR

LEGEND	
Property line	—————
Edge of pavement or roadway	- - - - -
Corporation line	—————
District line	—————
County line	—————
Original lot line	—————
Deed lot number	(15)
Parcel or Index number	XX
Improvement	o
Railroad	—————
Church	+
Cemetery	Δ
Golf Course	δ
School	⊕

REVISIONS	
1	
2	
3	
4	
5	
6	
7	
8	

RESTRICTION

All tax maps created under the provisions of reappraisal legislation are the property of Harrison County West Virginia and the reproduction, copying distribution or sale of such tax maps or any copies thereof without the written permission of the Harrison County Assessor is prohibited by law.

KEY MAP		
305	306	307
325	326	327
345	346	347

HARRISON COUNTY
STATE OF WEST VIRGINIA
Office of Assessor

DISTRICT
CLARK - OUTSIDE
CLARK - CITY
MAP NO:
326

Date, Aerial Photography: April 1960 Date, Map: Sept. 1960
Photo No: Scale: 1" = 400'