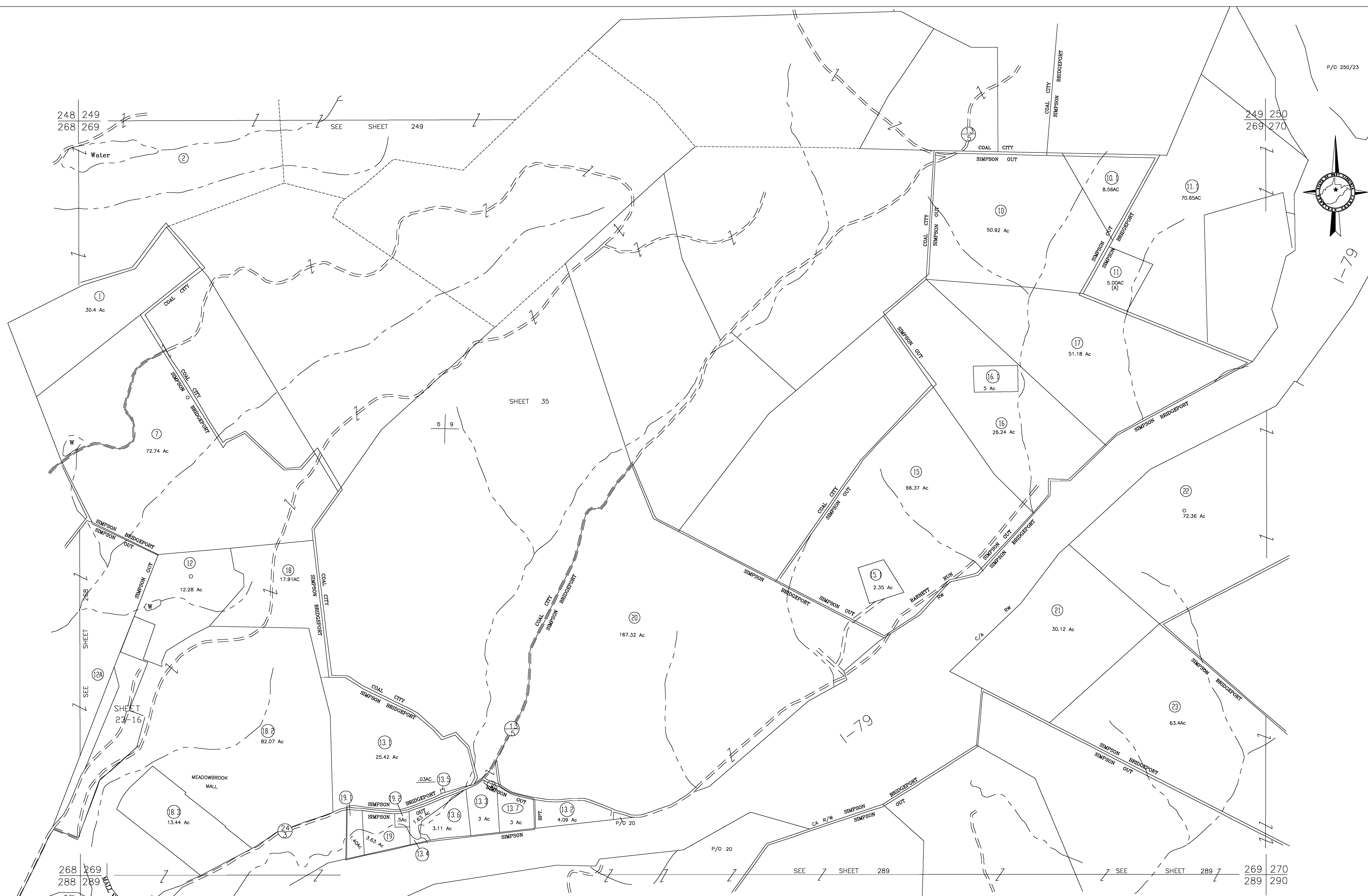


1-79

248 249  
268 269

SEE SHEET 249

249 250  
269 270



SHEET 35

6 9

SEE SHEET 268

SHEET 23-16

SEE SHEET 289

SEE SHEET 289

269 270  
289 290

For Tax Purposes Only

**CHERYL L. ROMANO**  
**HARRISON COUNTY ASSESSOR**

LEGEND	
Property line	—————
Edge of pavement or roadway	- - - - -
Corporation line	—————
District line	—————
County line	- - - - -
Original lot line	- - - - -
Deed lot number	(15)
Parcel or Index number	XX
Improvement	o
Railroad	—————
Church	+
Cemetery	Δ
Golf Course	δ
School	⬢

REVISIONS	
1	
2	
3	
4	
5	
6	
7	
8	

**RESTRICTION**

All tax maps created under the provisions of reappraisal legislation are the property of Harrison County West Virginia and the reproduction, copying distribution or sale of such tax maps or any copies thereof without the written permission of the Harrison County Assessor is prohibited by law.

KEY MAP		
248	249	250
268	269	270
288	289	290

**HARRISON COUNTY**  
**STATE OF WEST VIRGINIA**  
**Office of Assessor**

DISTRICT  
SIMPSON  
MAP NO:  
269

Date, Aerial Photography: April 1960 Date, Map: Sept. 1960  
Photo No: Scale: 1" = 400'