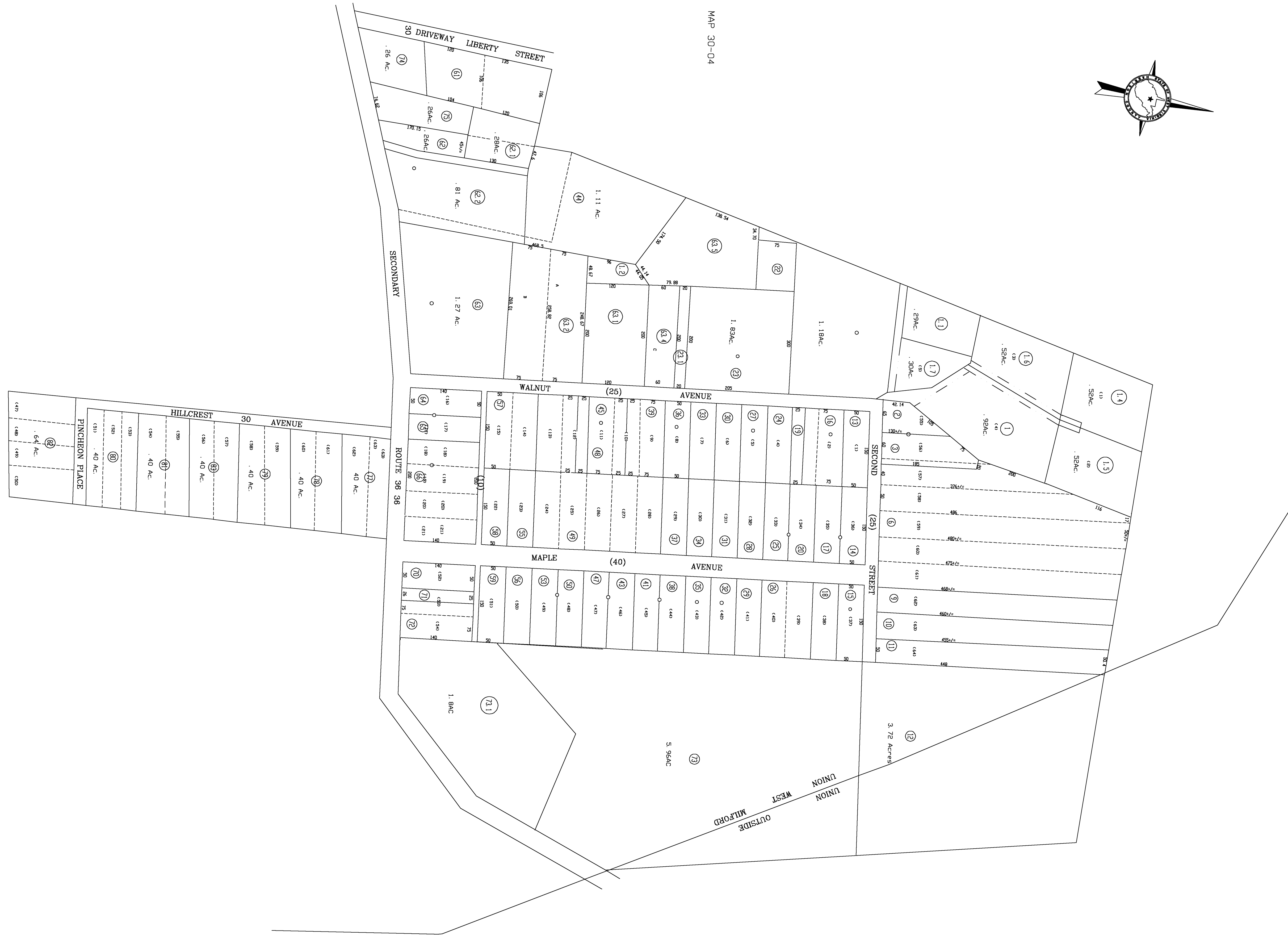


MAP 30-04



For Tax Purposes Only

CHERYL L. ROMANO
HARRISON COUNTY ASSESSOR

LEGEND

Property line	_____	Deed lot number	(15)
Edge of pavement or roadway	-----	Parcel or Index number	XX
Corporation line	_____	Improvement	o
District line	_____	Railroad	—+—
County line	-----	Church	+
Original lot line	- - - - -	Cemetery	Δ
		Golf Course	o
		School	⊠

REVISIONS

1	
2	
3	
4	
5	
6	
7	
8	

RESTRICTION

All tax maps created under the provisions of reappraisal legislation are the property of Harrison County West Virginia and the reproduction, copying distribution or sale of such tax maps or any copies thereof without the written permission of the Harrison County Assessor is prohibited by law.

KEY MAP

385	
385	3001
385	

HARRISON COUNTY
STATE OF WEST VIRGINIA
Office of Assessor

DISTRICT
 UNION – WEST MILFORD
 MAP NO:
 30-01

Date, Aerial Photography: April 1960 Date, Map: Sept. 1960
 Photo No: Scale: 1" = 100'