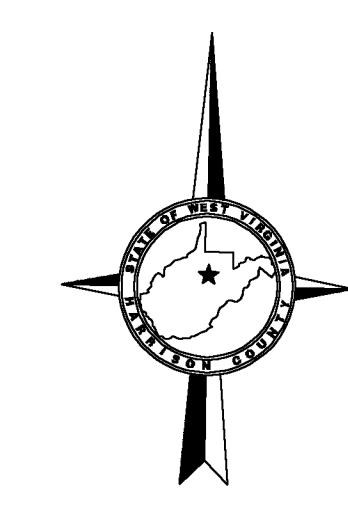
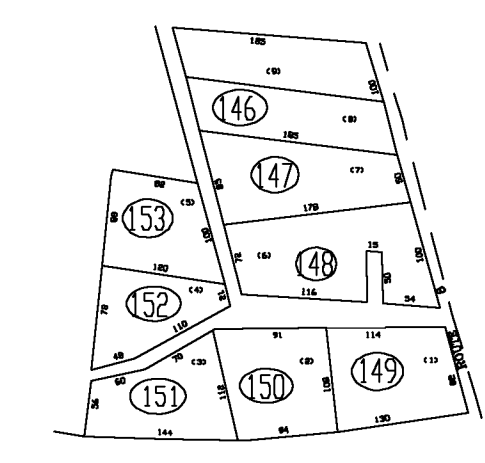


- 9 (60x50)
- 20 (47x150x147x250)
- 42 (179.8x11.14x 291.3x162.07)
- 47 (150x57)
- 29 (130x115)
- 28 (140x160x140x170)
- 44 (168x166.1x126x177.1)
- 47 (125x108x220x120x27)
- 130x294
- 53 (136x49x214x198x59)
- 69 (1252.9x502x471x46.3)
- 94 (129x154x138x140)
- 103 (321x42x266x89x73x62x80)



147|148
167|168

148|149
168|169

167|168
187|188

168|169
188|189

For Tax Purposes Only
CHERYL L. ROMANO
HARRISON COUNTY ASSESSOR

LEGEND	
Property line	—————
Edge of pavement or roadway	—————
Corporation line	—————
District line	—————
County line	—————
Original lot line	—————
Deed lot number	(15)
Parcel or Index number	XX
Improvement	o
Railroad	—————
Church	+
Cemetery	Δ
Golf Course	δ
School	⊕

REVISIONS
1
2
3
4
5
6
7
8

RESTRICTION
All tax maps created under the provisions of reappraisal legislation are the property of Harrison County West Virginia and the reproduction, copying distribution or sale of such tax maps or any copies thereof without the written permission of the Harrison County Assessor is prohibited by law.

KEY MAP
147 148
167 168 169
187 188 189

HARRISON COUNTY
STATE OF WEST VIRGINIA
Office of Assessor

DISTRICT
CLAY
MAP NO:
168
Date, Aerial Photography: April 1960 Date, Map: Sept. 1960
Photo No: Scale: 1" = 400'