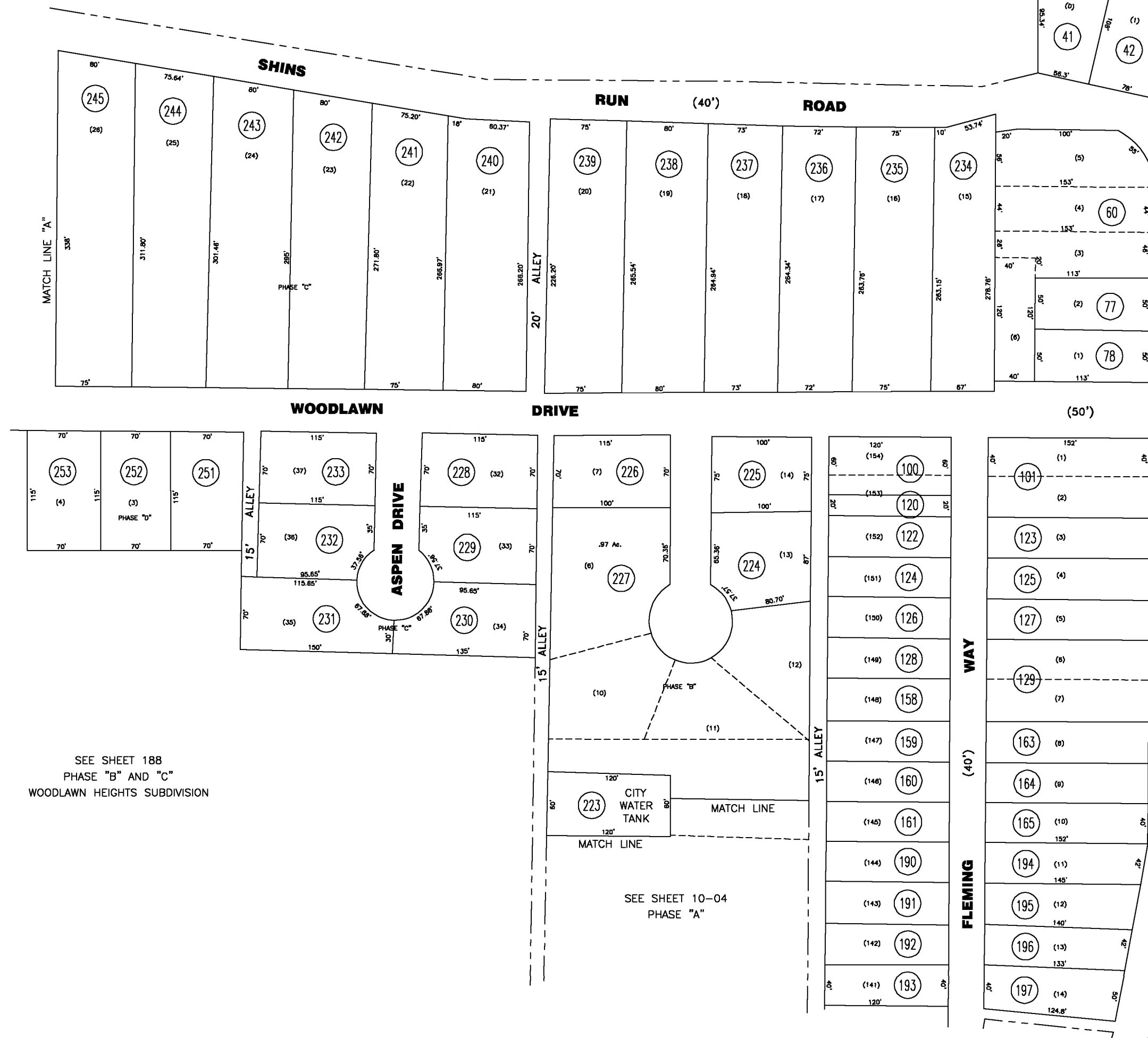
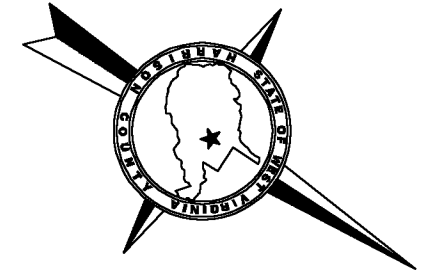
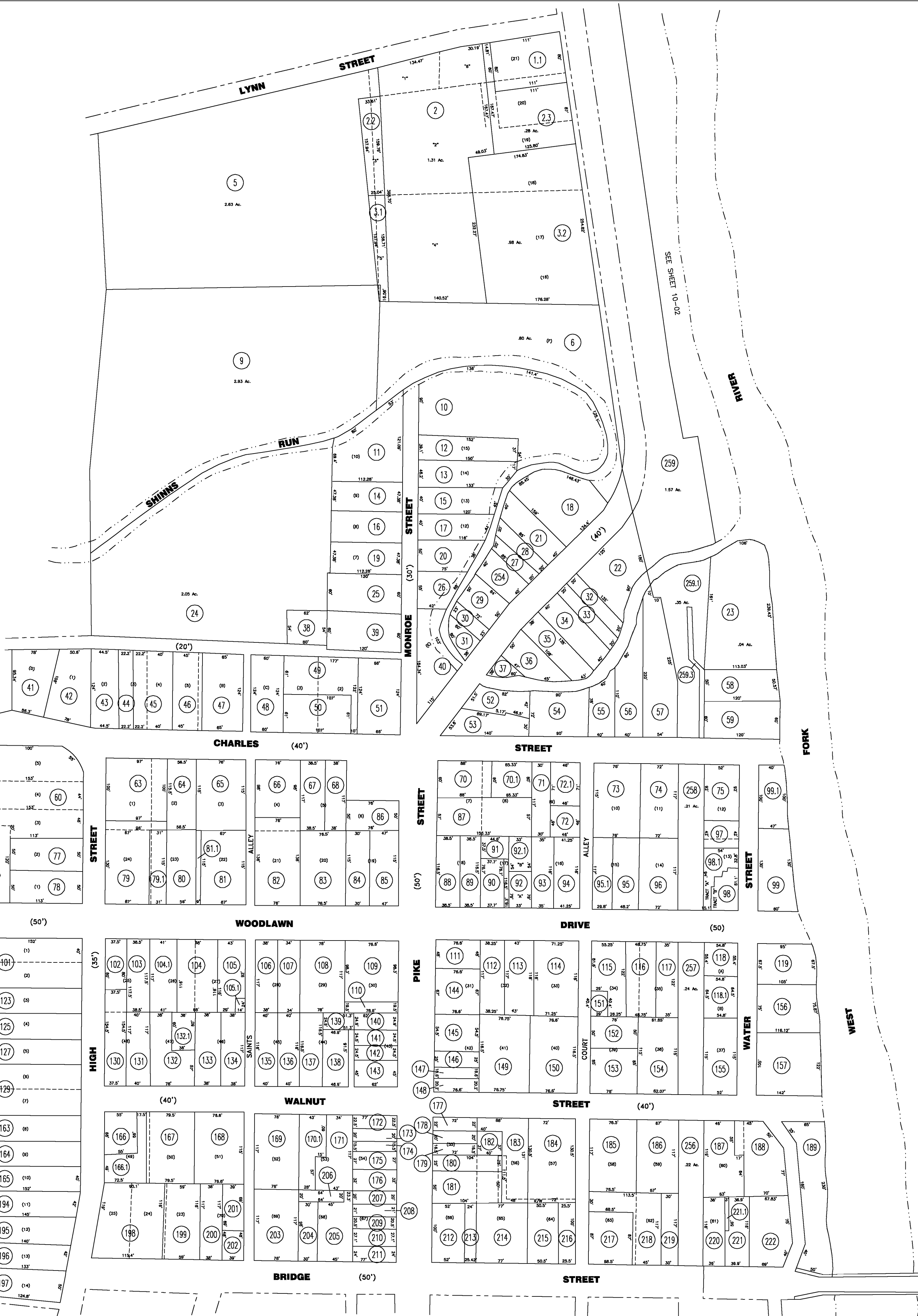


SEE SHEET 188



SEE SHEET 188
PHASE "B" AND "C"
WOODLAWN HEIGHTS SUBDIVISION

SEE SHEET 10-04
PHASE "A"



For Tax Purposes Only

CHERYL L. ROMANO
HARRISON COUNTY ASSESSOR

LEGEND

Property line	_____	Deed lot number	(15)
Edge of pavement or roadway	_____	Parcel or Index number	XX
Corporation line	_____	Improvement	O
District line	_____	Railroad	—+—
County line	_____	Church	+
Original lot line	-----	Cemetery	Δ
		Golf Course	o
		School	⌂

REVISIONS

1	
2	
3	
4	
5	
6	
7	
8	

RESTRICTION

All tax maps created under the provisions of reappraisal legislation are the property of Harrison County West Virginia and the reproduction, copying distribution or sale of such tax maps or any copies thereof without the written permission of the Harrison County Assessor is prohibited by law.

KEY MAP

	1002	
188	1003	188
	1004	

HARRISON COUNTY
STATE OF WEST VIRGINIA
Office of Assessor

DISTRICT
CLAY — SHINNSTON
MAP NO:
10-03

Date, Aerial Photography: April 1960 Date, Map: Sept. 1960
Photo No: Scale: 1" = 100'