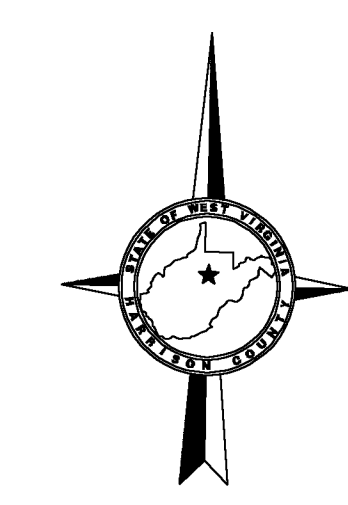
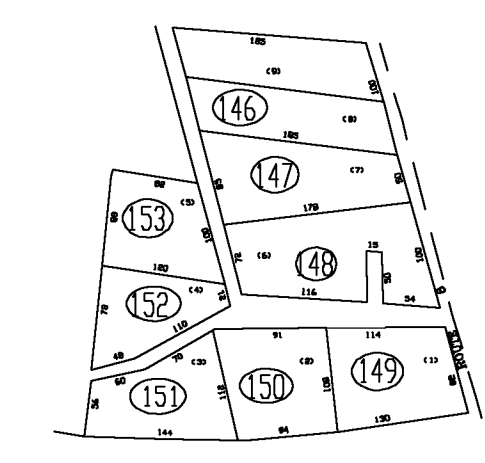


9	(60x50)	29	(130x115)	53	(136x49x21x19x59)
20	(47x150x147x250)	28	(140x160x140x170)	59	(252-9x50x247x146-3)
42	(179-8x111-14x291-3x162-07)	44	(168x166-1x126x177-1)	94	(129x154x138x140)
47	(150x57)	47	(125x102x204x120x7)	103	(321x42x266x89x73x62x80)
			(138x94)		



147|148  
167|168

148|149  
168|169

167|168  
187|188

168|169  
188|189

For Tax Purposes Only  
**CHERYL L. ROMANO**  
**HARRISON COUNTY ASSESSOR**

LEGEND	
Property line	—————
Edge of pavement or roadway	—————
Corporation line	—————
District line	—————
County line	—————
Original lot line	—————
Deed lot number	(15)
Parcel or Index number	XX
Improvement	o
Railroad	—————
Church	+
Cemetery	Δ
Golf Course	o
School	⊕

REVISIONS
1
2
3
4
5
6
7
8

**RESTRICTION**  
All tax maps created under the provisions of reappraisal legislation are the property of Harrison County West Virginia and the reproduction, copying distribution or sale of such tax maps or any copies thereof without the written permission of the Harrison County Assessor is prohibited by law.

KEY MAP
147   148
167   168   169
187   188   189

**HARRISON COUNTY**  
**STATE OF WEST VIRGINIA**  
**Office of Assessor**

DISTRICT  
CLAY  
MAP NO:  
168  
Date, Aerial Photography: April 1960 Date, Map: Sept. 1960  
Photo No: Scale: 1" = 400'