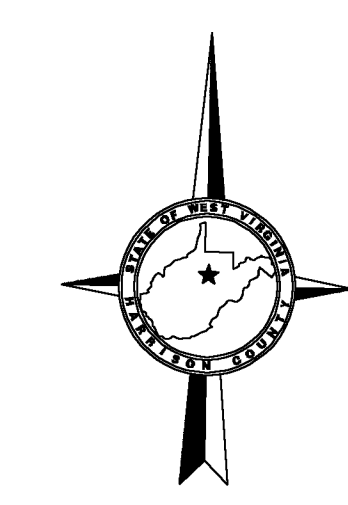
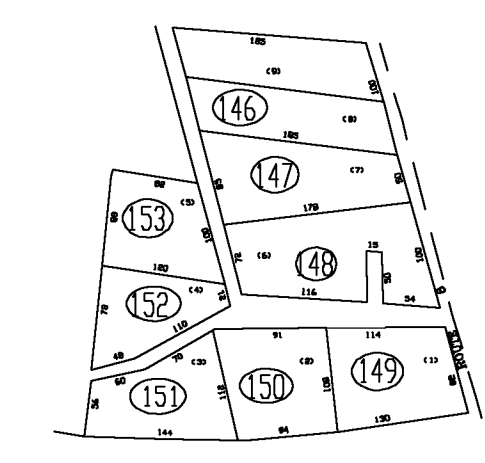


- 9 (60x50)
- 20 (47x150x147x250)
- 42 (179.8x11.14x 291.3x162.07)
- 47 (150x57)
- 29 (130x115)
- 38 (140x160x140x170)
- 44 (168x166.1x126x177.1)
- 47 (125x108x220x120x57)
- 53 (136x49x214x198x59)
- 69 (1252.9x502x471x146.3)
- 94 (129x154x138x140)
- 103 (321x42x266x89x73x62x80)



147|148  
167|168

148|149  
168|169

167|168  
187|188

168|169  
188|189

For Tax Purposes Only

**CHERYL L. ROMANO**  
**HARRISON COUNTY ASSESSOR**

**LEGEND**

Property line	—————	Deed lot number	(15)
Edge of pavement or roadway	-----	Parcel or Index number	XX
Corporation line	=====	Improvement	o
District line	-----	Railroad	—+—
County line	-----	Church	+
Original lot line	-----	Cemetery	Δ
		Golf Course	δ
		School	⊕

**REVISIONS**

1
2
3
4
5
6
7
8

**RESTRICTION**

All tax maps created under the provisions of reappraisal legislation are the property of Harrison County West Virginia and the reproduction, copying distribution or sale of such tax maps or any copies thereof without the written permission of the Harrison County Assessor is prohibited by law.

**KEY MAP**

147	148
167	168 169
187	188 189

**HARRISON COUNTY**  
**STATE OF WEST VIRGINIA**  
**Office of Assessor**

DISTRICT  
CLAY  
MAP NO:  
168

Date, Aerial Photography: April 1960 Date, Map: Sept. 1960  
Photo No: Scale: 1" = 400'