

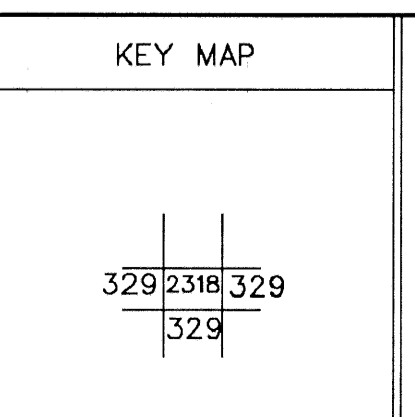
For Tax Purposes Only
 Prepared by
CHERYL L. ROMANO
 HARRISON COUNTY ASSESSOR

LEGEND	
Property line	—————
Edge of pavement or roadway	- - - - -
Corporation line	—————
District line	- - - - -
County line	—————
Original lot line	-----
Deed lot number	(15)
Parcel or index number	XX/XX
Improvement	o
Railroad	—+—+—+—

REVISIONS	
1	
2	
3	
4	
5	
6	
7	
8	

RESTRICTION

All tax maps created under the provisions of reappraisal legislation are the property of Harrison County West Virginia and the reproduction, copying, distribution or sale of such tax maps or any copies thereof without the written permission of the Harrison County Assessor is prohibited by law.



HARRISON COUNTY
 STATE OF WEST VIRGINIA
 Office of Assessor

DISTRICT
SIMPSON-OUTSIDE
 MAP NO:
23-18

Date, Aerial Photography
 Photo No:

Date, Map: xxxxxxxx
 Scale: 1" = 100'