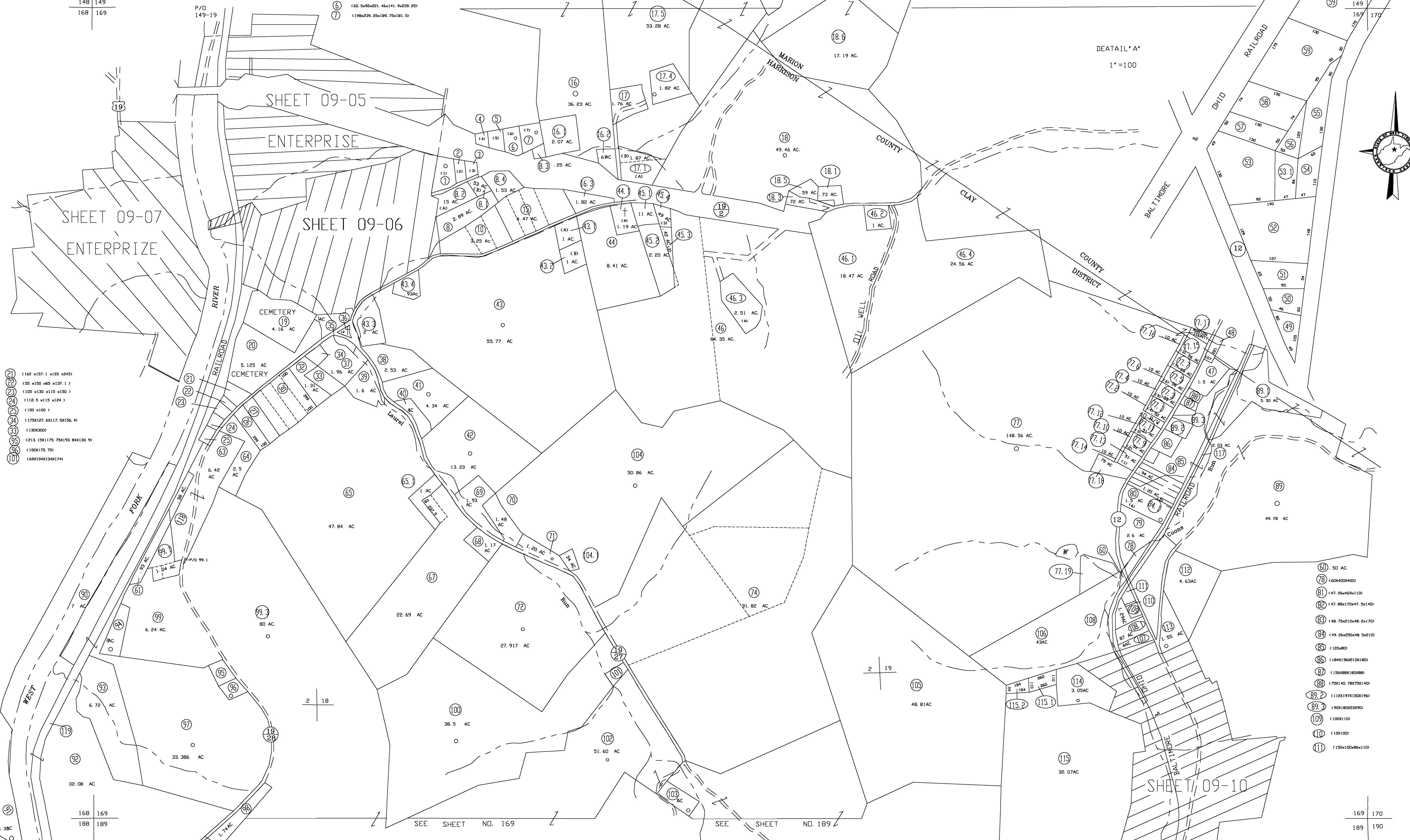


148 149  
168 169

- 1 (217.8x258x150x110)
- 2 (99x210x95x150)
- 3 (88x145x115x40x30)
- 4 (126x102x110.22x166.4)
- 5 (138x166.4x126.06x221.46)
- 6 (60.5x90x221.46x141.9x229.25)
- 7 (198x229.25x189.75x181.5)



- 21 (162 x157.1 x120 x243)
- 22 (83 x130 x65 x137.1)
- 23 (105 x130 x115 x150)
- 24 (112.5 x115 x124)
- 25 (150 x100)
- 26 (175x127.6x117.5x156.4)
- 27 (130x200)
- 28 (213.15x117.5x94.19x84.13x70)
- 29 (150x175.73)
- 30 (69x194x134x174)

- 60 50 AC.
- 61 (62x40x20x40)
- 62 (47.26x46x110)
- 63 (47.88x170x47.26x140)
- 64 75x210x48.2x170
- 65 (64x250x48.2x110)
- 66 (120x80)
- 67 (184x196x101x180)
- 68 (156x81x180x80)
- 69 (75x140.78x75x140)
- 70 (112x197x130x190)
- 71 (92x182x390)
- 72 (100x110)
- 73 (15x100)
- 74 (150x100x86x110)

For Tax Purposes Only  
**CHERYL L. ROMANO**  
**HARRISON COUNTY ASSESSOR**

LEGEND	
Property line	—
Edge of pavement or roadway	— — — —
Corporation line	— — — — —
District line	— — — — —
County line	— — — — —
Original lot line	- - - - -
Deed lot number	(15)
Parcel or Index number	XX
Improvement	o
Railroad	— — — — —
Church	+
Cemetery	Δ
Golf Course	δ
School	⬠

REVISIONS	
1	
2	
3	
4	
5	
6	
7	
8	

**RESTRICTION**  
All tax maps created under the provisions of reappraisal legislation are the property of Harrison County West Virginia and the reproduction, copying distribution or sale of such tax maps or any copies thereof without the written permission of the Harrison County Assessor is prohibited by law.

KEY MAP	
148	149
168	169 170
188	189 190

**HARRISON COUNTY**  
**STATE OF WEST VIRGINIA**  
**Office of Assessor**

DISTRICT  
CLAY  
MAP NO:  
169

Date, Aerial Photography: April 1960 Date, Map: Sept. 1960  
Photo No: Scale: 1" = 400'