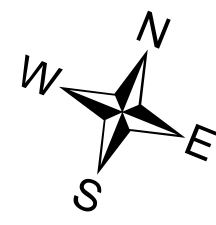
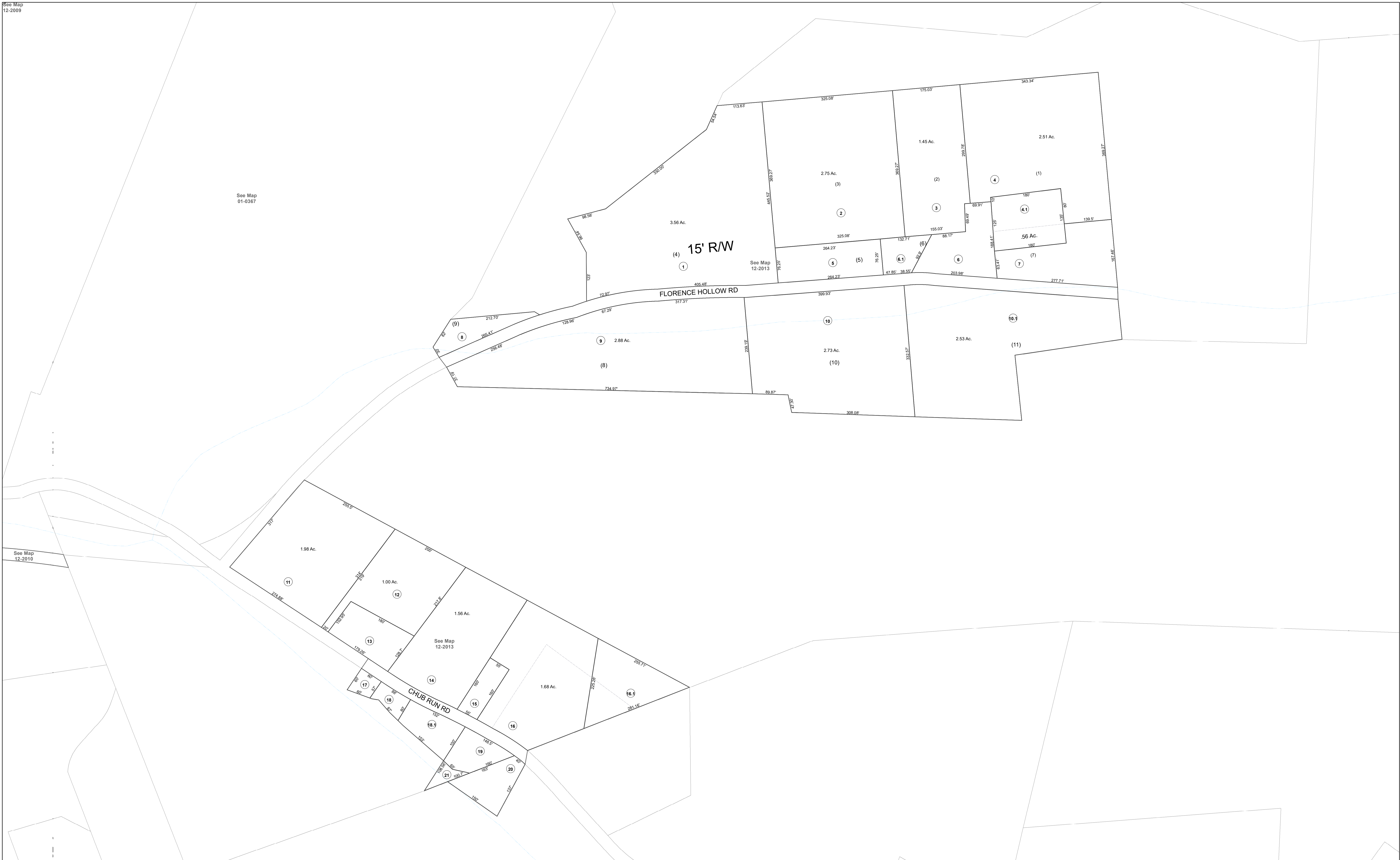


See Map 01-0367

See Map 12-2013

See Map 12-2010



**FOR TAX PURPOSES ONLY**

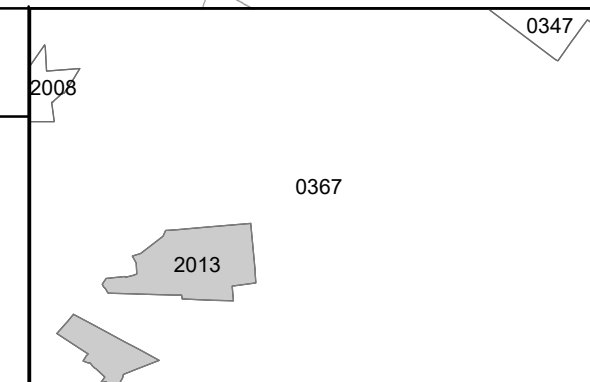
Prepared By:  
**Joseph R. Romano**  
 Harrison County Assessor

**Legend**

|                             |           |                                  |       |
|-----------------------------|-----------|----------------------------------|-------|
| Property Line               | —————     | Original Lot Line                | ----- |
| Edge of pavement or roadway | - - - - - | Deed lot number (in parenthesis) | (15)  |
| Corporation line            | —————     | Parcel or index number           | ○     |
| District line               | - - - - - | Improvement                      | ○     |
| County Line                 | —————     | Railroad                         | ————— |
|                             |           | Water                            | ~~~~~ |

**Restriction**

|                      |   |
|----------------------|---|
| Latest Revision      | All tax maps created under the provisions of reappraisal legislation are the property of the Assessor of Harrison County, West Virginia and the reproduction, copying, modification, distribution or sale of such tax maps or any copies thereof without the written permission of the Harrison County Assessor is prohibited by law. |
| 5/28/2013 2:46:33 PM |   |
|                      |   |
|                      |   |
|                      |   |



**HARRISON COUNTY - WEST VIRGINIA**  
 Office of Assessor

District: Grant District  
 Map No: 12-2013  
 Date: January 1, 2017  
 Scale: 1 inch = 100 feet