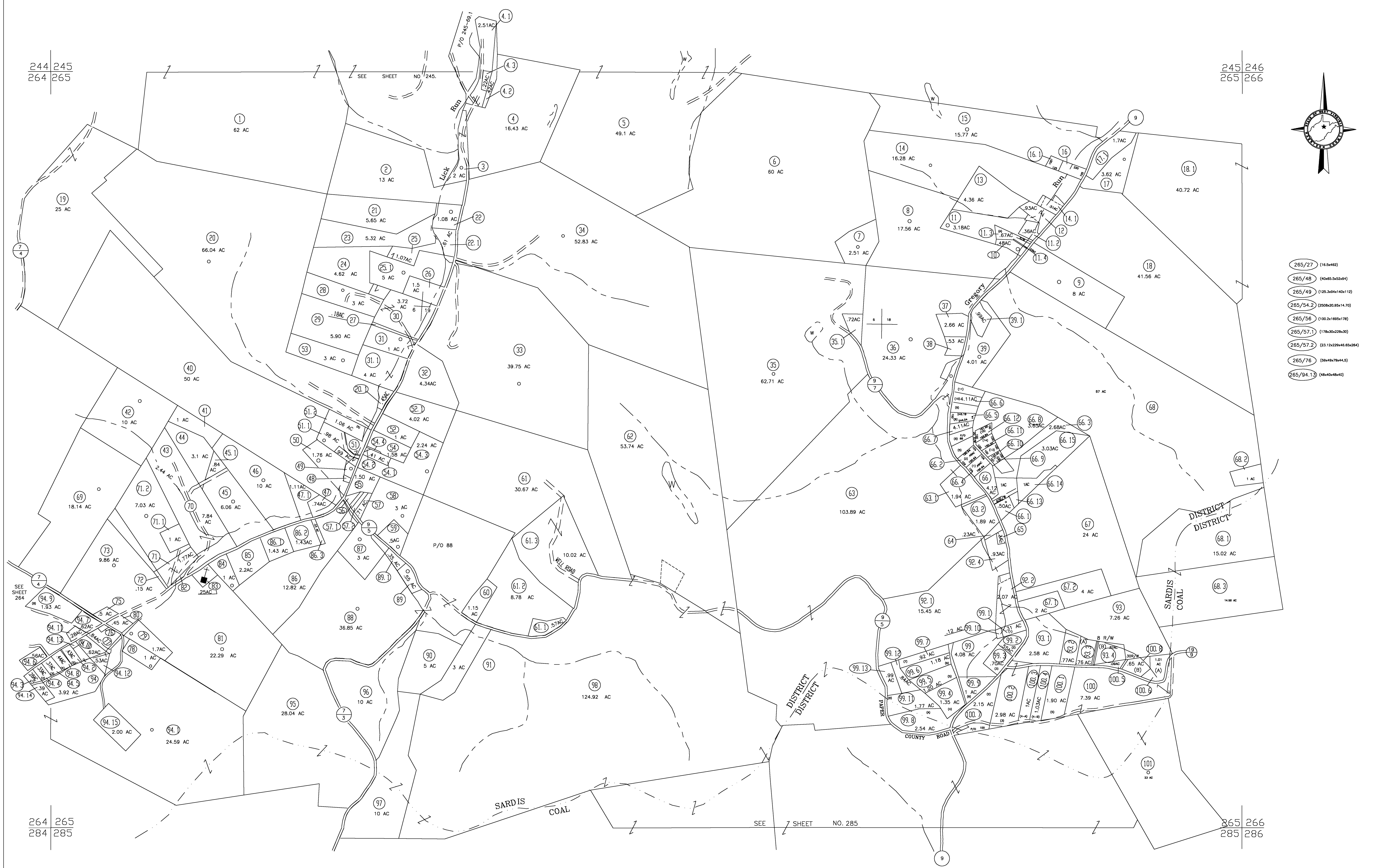
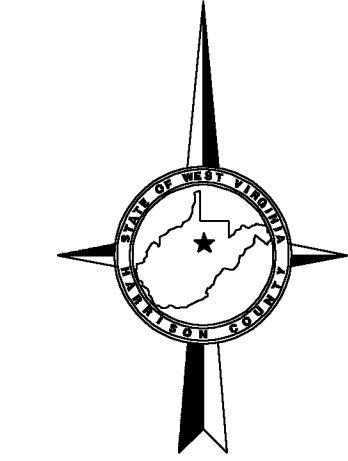


244 245
264 265

245 246
265 266



- 265/27 (16.5+42)
- 265/48 (40+85.5+2+94)
- 265/49 (125.3+9+1+40+112)
- 265/54.2 (250+20.85+14.70)
- 265/56 (100.2+185+178)
- 265/57.1 (178.3+229+30)
- 265/57.2 (23.12+229+48.65+284)
- 265/76 (59+49+78+44.2)
- 265/94.13 (48+40+48+40)

264 265
284 285

265 266
285 286

SEE SHEET NO. 285

For Tax Purposes Only

CHERYL L. ROMANO
HARRISON COUNTY ASSESSOR

LEGEND

Property line	—————	Deed lot number	(15)
Edge of pavement or roadway	-----	Parcel or Index number	XX
Corporation line	=====	Improvement	o
District line	-----	Railroad	—+—
County line	-----	Church	+
Original lot line	-----	Cemetery	Δ
		Golf Course	δ
		School	⊕

REVISIONS

1	_____
2	_____
3	_____
4	_____
5	_____
6	_____
7	_____
8	_____

RESTRICTION

All tax maps created under the provisions of reappraisal legislation are the property of Harrison County West Virginia and the reproduction, copying distribution or sale of such tax maps or any copies thereof without the written permission of the Harrison County Assessor is prohibited by law.

KEY MAP

244	245	246
264	265	266
284	285	286

HARRISON COUNTY
STATE OF WEST VIRGINIA
Office of Assessor

DISTRICT
SARDIS - COAL
MAP NO:
265

Date, Aerial Photography: April 1960 Date, Map: Sept. 1960
Photo No: Scale: 1" = 400'