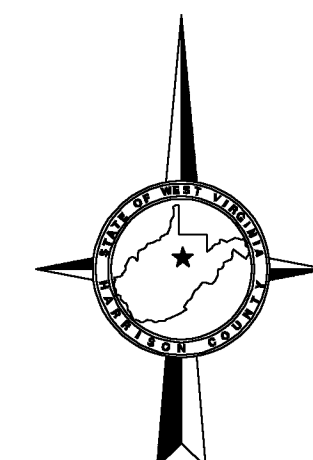


265 266
285 286

266 267
286 287

- 17 (219.3X31X169X53.9X10)
- 18 (60X89X53.3X95.4)
- 19 (61.04X95.4X53.5X102.7)
- 20 (4.37X102.7X53X106.8)
- 25.3 .05AC
- 27.3 (25X157.1X151.6)
- 28 (140.3X52.9X153.9X59X62)
- 29 (40X198.5X87.5X106X109)
- 94.3 .08AC
- 94.4 .06AC



SHEET 266

SHEET 266

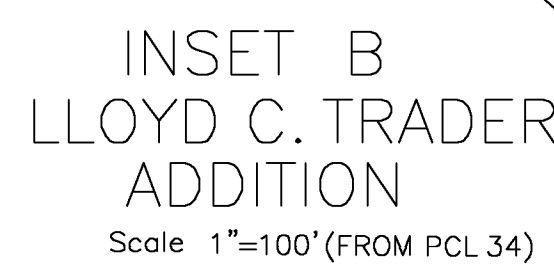
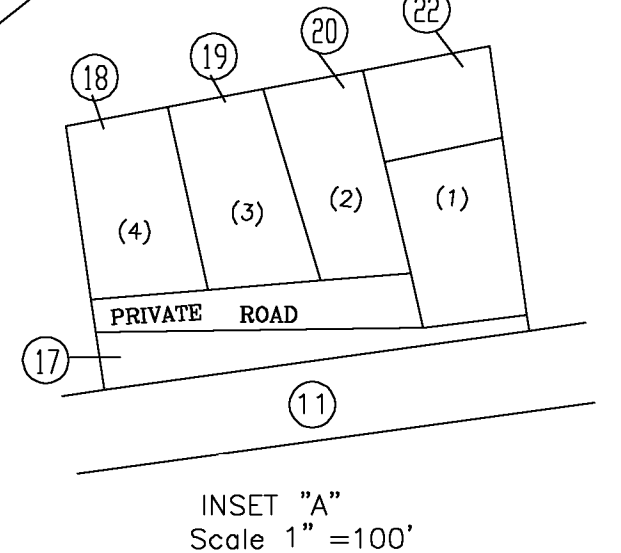
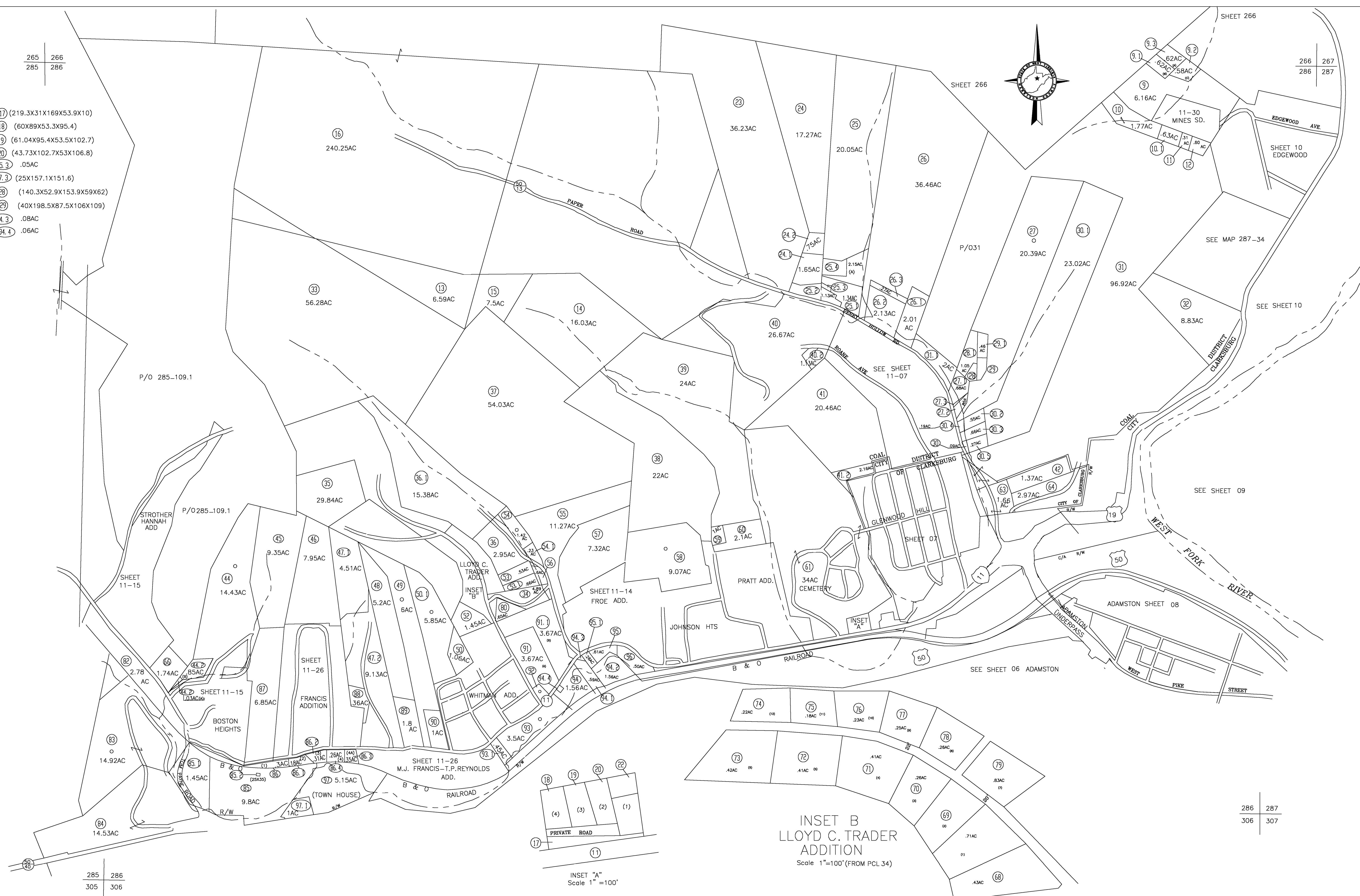
SHEET 10
EDGEWOOD

SEE SHEET 09

SEE SHEET 06 ADAMSTON

286 287
306 307

285 286
305 306



For Tax Purposes Only
CHERYL L. ROMANO
HARRISON COUNTY ASSESSOR

LEGEND	
Property line	—
Edge of pavement or roadway	- - - -
Corporation line	—
District line	—
County line	- - - -
Original lot line	- - - - -
Deed lot number	(15)
Parcel or Index number	XX
Improvement	o
Railroad	—
Church	+
Cemetery	Δ
Golf Course	δ
School	⊕

REVISIONS	
1	
2	
3	
4	
5	
6	
7	
8	

RESTRICTION

All tax maps created under the provisions of reappraisal legislation are the property of Harrison County West Virginia and the reproduction, copying distribution or sale of such tax maps or any copies thereof without the written permission of the Harrison County Assessor is prohibited by law.

KEY MAP

HARRISON COUNTY
STATE OF WEST VIRGINIA
Office of Assessor

DISTRICT
COAL
MAP NO:
286

Date, Aerial Photography: April 1960 Date, Map: Sept. 1960
Photo No: Scale: 1" = 400'