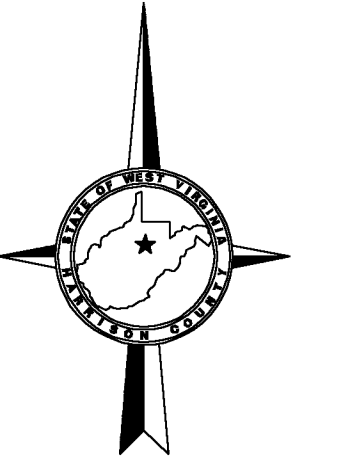
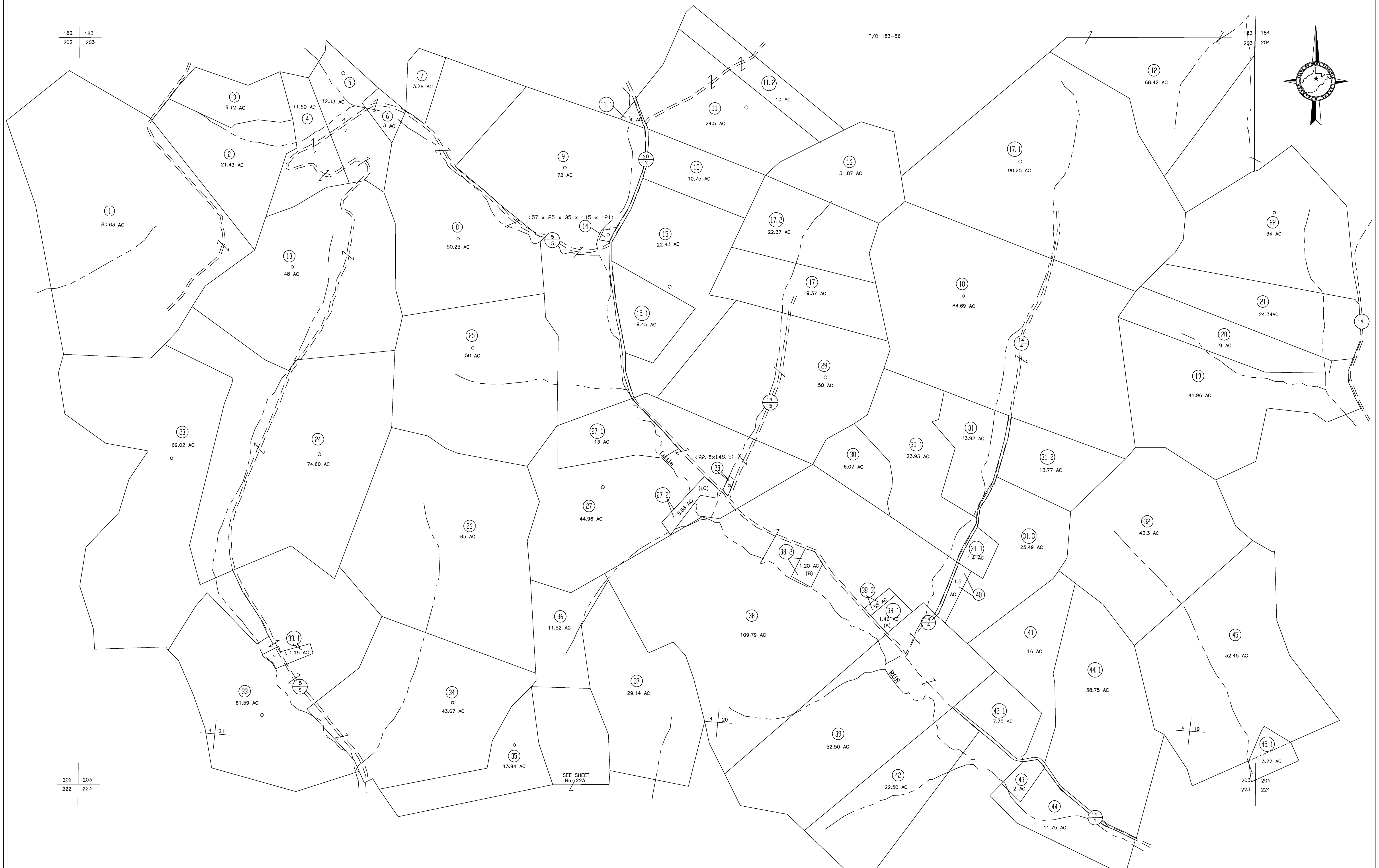


182 183
202 203

183 184
203 204



P/O 183-56



202 203
222 223

203 204
223 224

For Tax Purposes Only

CHERYL L. ROMANO
HARRISON COUNTY ASSESSOR

LEGEND

Property line	—————	Deed lot number	(15)
Edge of pavement or roadway	- - - - -	Parcel or Index number	XX
Corporation line	—————	Improvement	o
District line	—————	Railroad	—+—
County line	- - - - -	Church	+
Original lot line	- - - - -	Cemetery	Δ
		Golf Course	δ
		School	⬢

REVISIONS

1	
2	
3	
4	
5	
6	
7	
8	

RESTRICTION

All tax maps created under the provisions of reappraisal legislation are the property of Harrison County West Virginia and the reproduction, copying distribution or sale of such tax maps or any copies thereof without the written permission of the Harrison County Assessor is prohibited by law.

KEY MAP

182	183	184
202	203	204
222	223	224

HARRISON COUNTY
STATE OF WEST VIRGINIA
Office of Assessor

DISTRICT
SARDIS
MAP NO:
203

Date, Aerial Photography: April 1960 Date, Map: Sept. 1960
Photo No: Scale: 1" = 400'