

See Map
15-2310

See Map
15-0310

See Map
15-2314

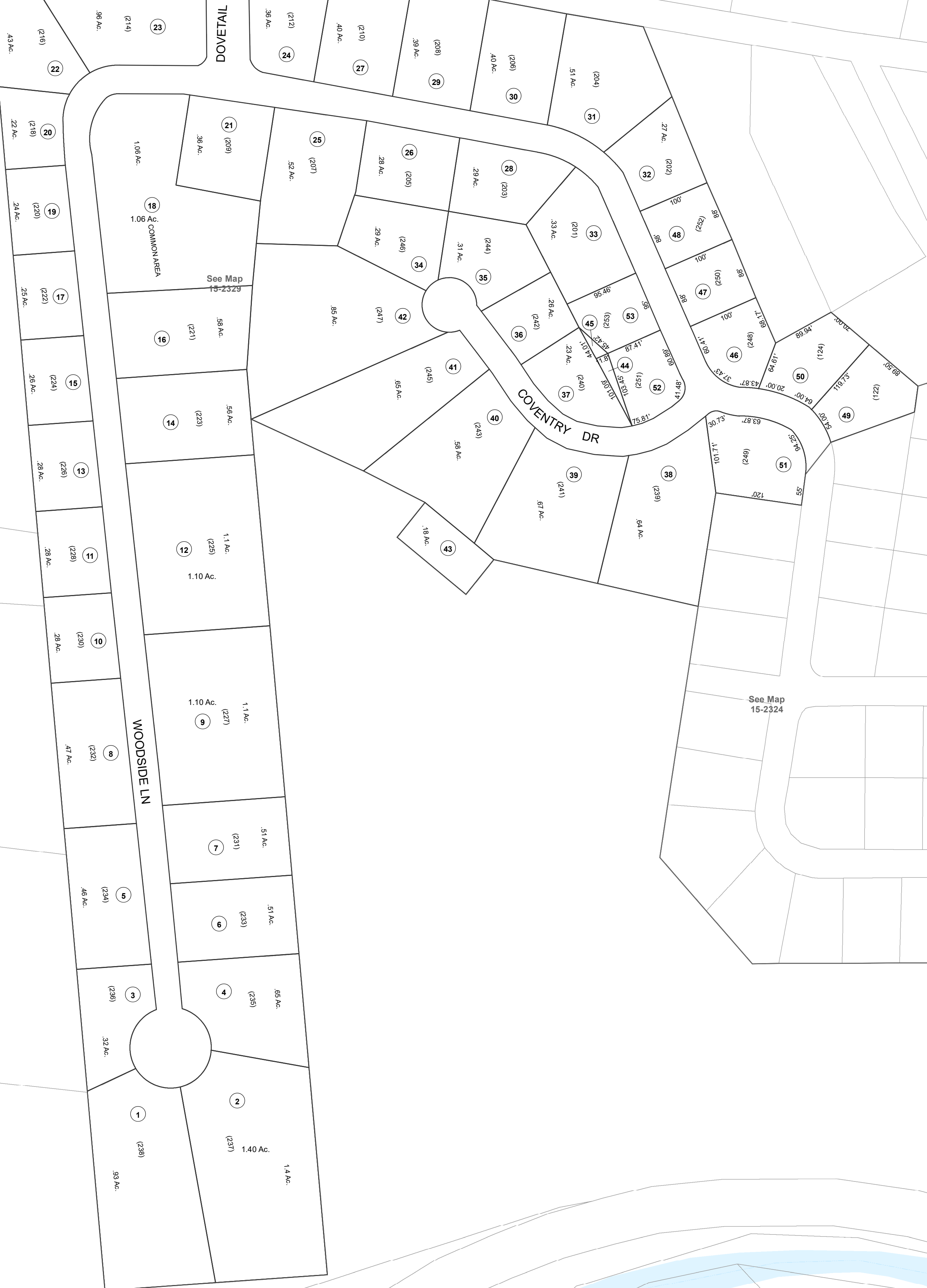
See Map
15-2324

DOVETAIL DR

COVENTRY DR

WOODSIDE LN

COMMONWEALTH



Legend

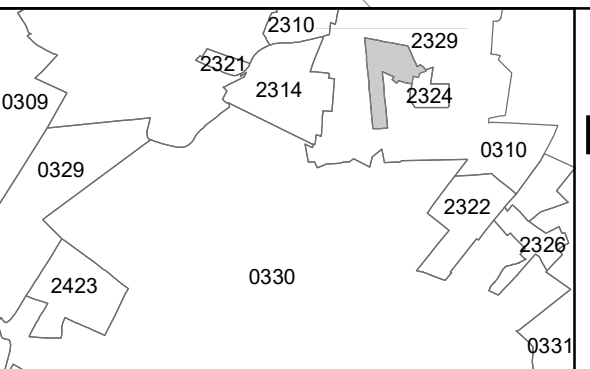
Property Line	—————
Edge of pavement or roadway	- - - - -
Corporation line	- · - · -
District line	- · - · -
County Line	- · - · -

Original Lot Line	—————
Deed lot number (in parenthesis)	(15)
Parcel or index number	⊙
Improvement	—○—
Railroad	—+—
Water	~~~~~

Restriction

Latest Revision	5/28/2013 2:46:33 PM

All tax maps created under the provisions of reappraisal legislation are the property of the Assessor of Harrison County, West Virginia and the reproduction, copying, modification, distribution or sale of such tax maps or any copies thereof without the written permission of the Harrison County Assessor is prohibited by law.



FOR TAX PURPOSES ONLY
 Prepared By:
Joseph R. Romano
 Harrison County Assessor

HARRISON COUNTY - WEST VIRGINIA
 Office of Assessor

District: Simpson District
 Map No: 15-2329
 Date: January 1, 2017
 Scale: 1 inch = 100 feet

15-2329