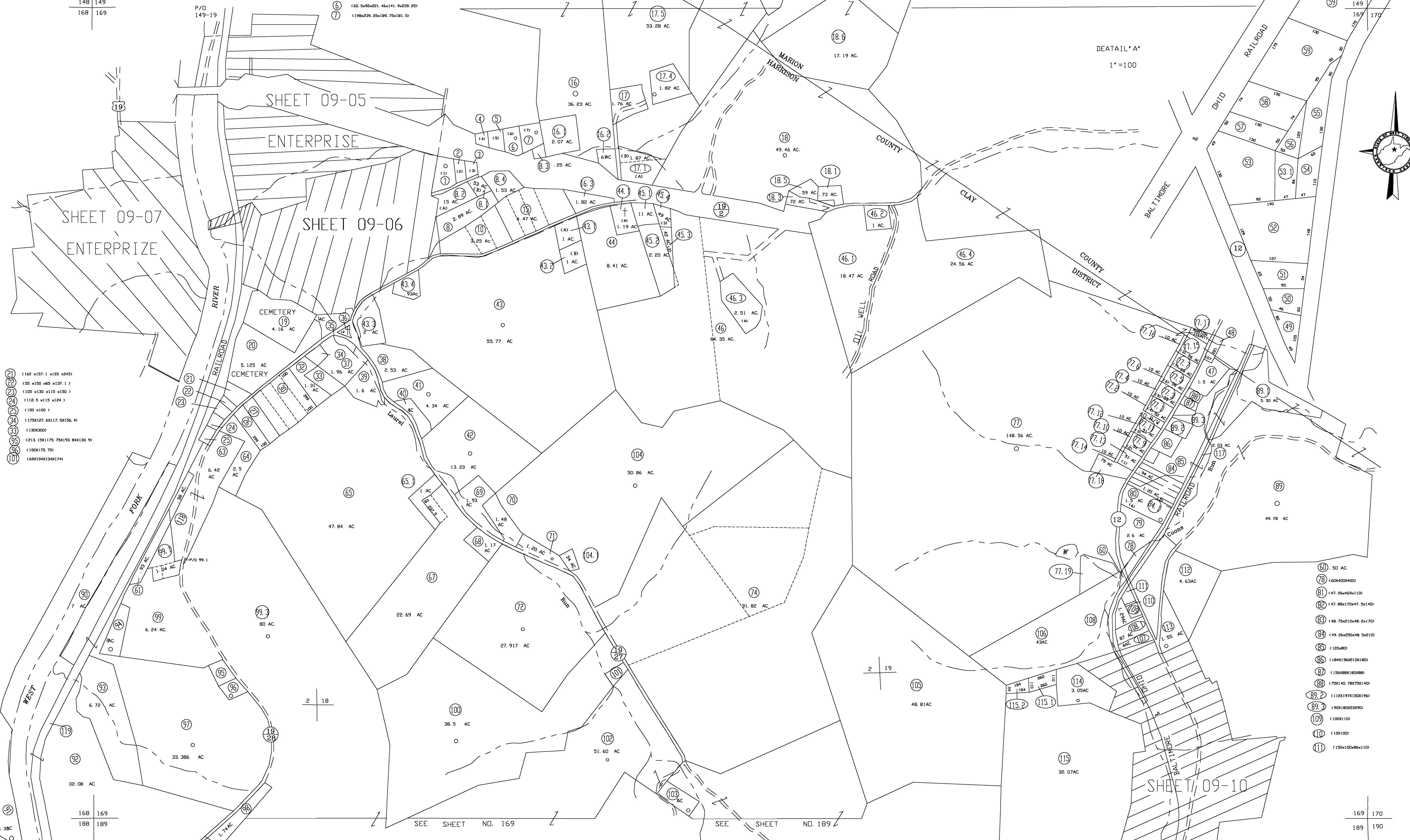


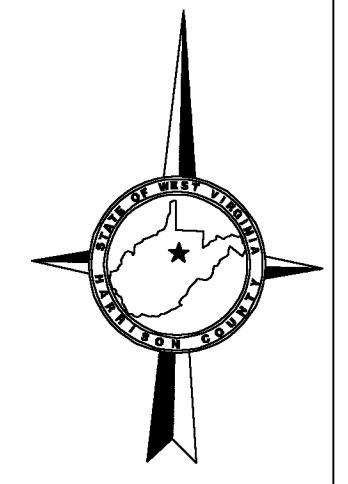
148 149
168 169

- 1 (217.8x258x150x110)
- 2 (99x210x95x150)
- 3 (88x145x115x40x30)
- 4 (126x102x110.22x166.4)
- 5 (138x166.4x126.06x221.46)
- 6 (60.5x90x221.46x141.9x229.25)
- 7 (198x229.25x189.75x181.5)



- 21 (162 x157.1 x120 x243)
- 22 (83 x130 x65 x137.1)
- 23 (105 x130 x115 x150)
- 24 (112.5 x115 x124)
- 25 (150 x100)
- 26 (175x127.6x117.5x156.4)
- 27 (130x200)
- 28 (213.15x117.5x94.19x84.13x70)
- 29 (150x175.73)
- 30 (69x194x134x174)

- 60 50 AC.
- 61 47.26x46x110
- 62 47.88x170x47.26x140
- 63 48.75x210x48.26x170
- 64 49.26x250x48.26x170
- 65 120x80
- 66 126x196x101x180
- 67 156x88x180x88
- 68 175x143.78x131x140
- 69 112x197x130x190
- 70 92x182x23x90
- 71 100x110
- 72 15x100
- 73 150x100x86x110



For Tax Purposes Only

CHERYL L. ROMANO
HARRISON COUNTY ASSESSOR

LEGEND	
Property line	—
Edge of pavement or roadway	—
Corporation line	—
District line	—
County line	—
Original lot line	—
Deed lot number	(15)
Parcel or Index number	XX
Improvement	o
Railroad	—
Church	+
Cemetery	Δ
Golf Course	δ
School	⬢

REVISIONS	
1	
2	
3	
4	
5	
6	
7	
8	

RESTRICTION

All tax maps created under the provisions of reappraisal legislation are the property of Harrison County West Virginia and the reproduction, copying distribution or sale of such tax maps or any copies thereof without the written permission of the Harrison County Assessor is prohibited by law.

KEY MAP	
148	149
168	169 170
188	189 190

HARRISON COUNTY

STATE OF WEST VIRGINIA

Office of Assessor

DISTRICT
CLAY
MAP NO:
169

Date, Aerial Photography: April 1960 Date, Map: Sept. 1960
Photo No: Scale: 1" = 400'