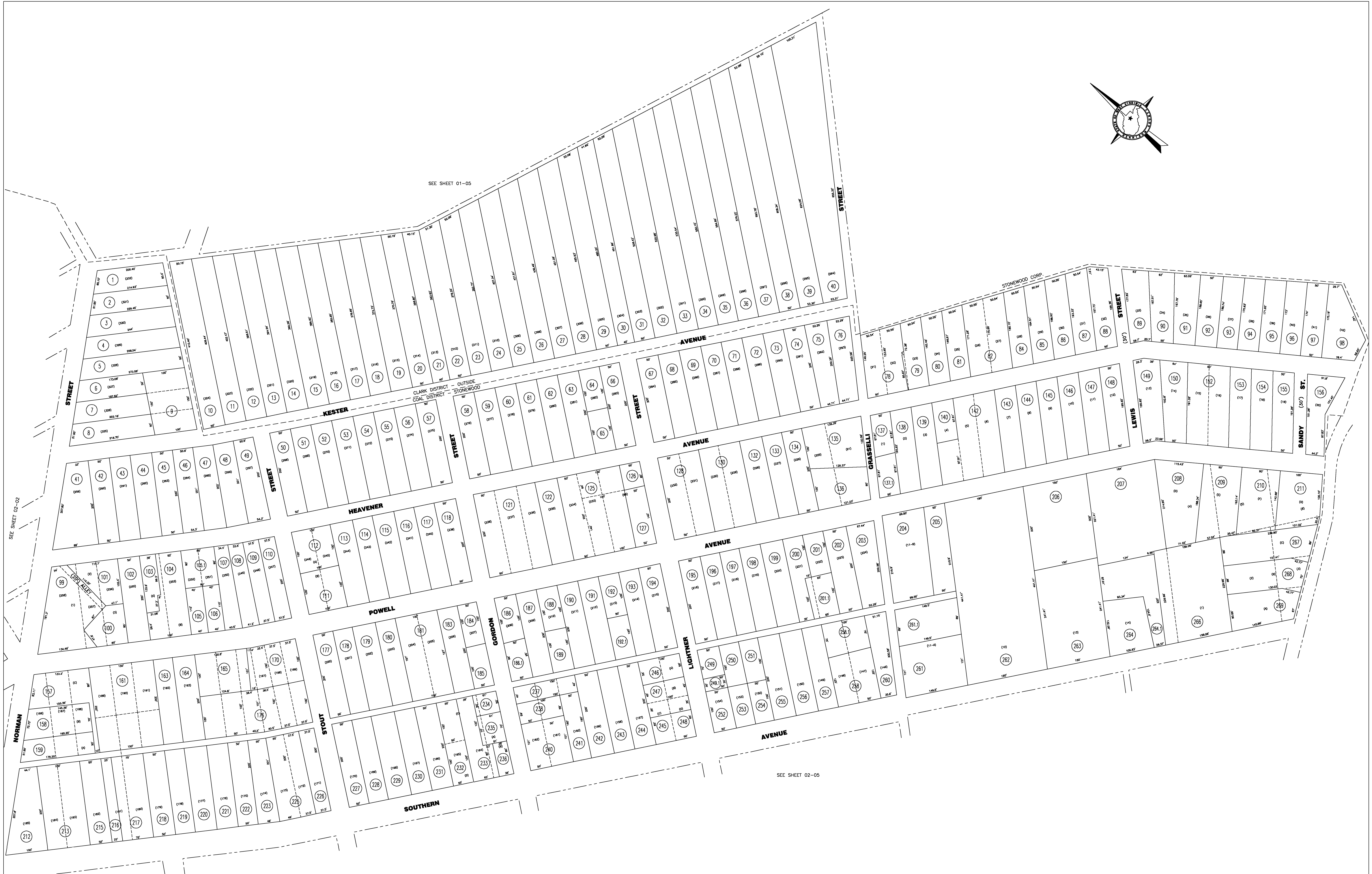


SEE SHEET 01-05



SEE SHEET 02-02

SEE SHEET 02-05

For Tax Purposes Only

CHERYL L. ROMANO
HARRISON COUNTY ASSESSOR

LEGEND

Property line	—————	Deed lot number	(15)
Edge of pavement or roadway	—————	Parcel or Index number	XX
Corporation line	—————	Improvement	o
District line	—————	Railroad	—+—
County line	—————	Church	+
Original lot line	-----	Cemetery	Δ
		Golf Course	o
		School	⬢

REVISIONS

1	
2	
3	
4	
5	
6	
7	
8	

RESTRICTION

All tax maps created under the provisions of reappraisal legislation are the property of Harrison County West Virginia and the reproduction, copying distribution or sale of such tax maps or any copies thereof without the written permission of the Harrison County Assessor is prohibited by law.

KEY MAP

	0105	
0202	0204	
	0205	

HARRISON COUNTY

STATE OF WEST VIRGINIA

Office of Assessor

DISTRICT
CLARK - STONEMOOD
CLARK - OUTSIDE
MAP NO:
02-04

Date, Aerial Photography: April 1960 Date, Map: Sept. 1960
Photo No: Scale: 1" = 100'