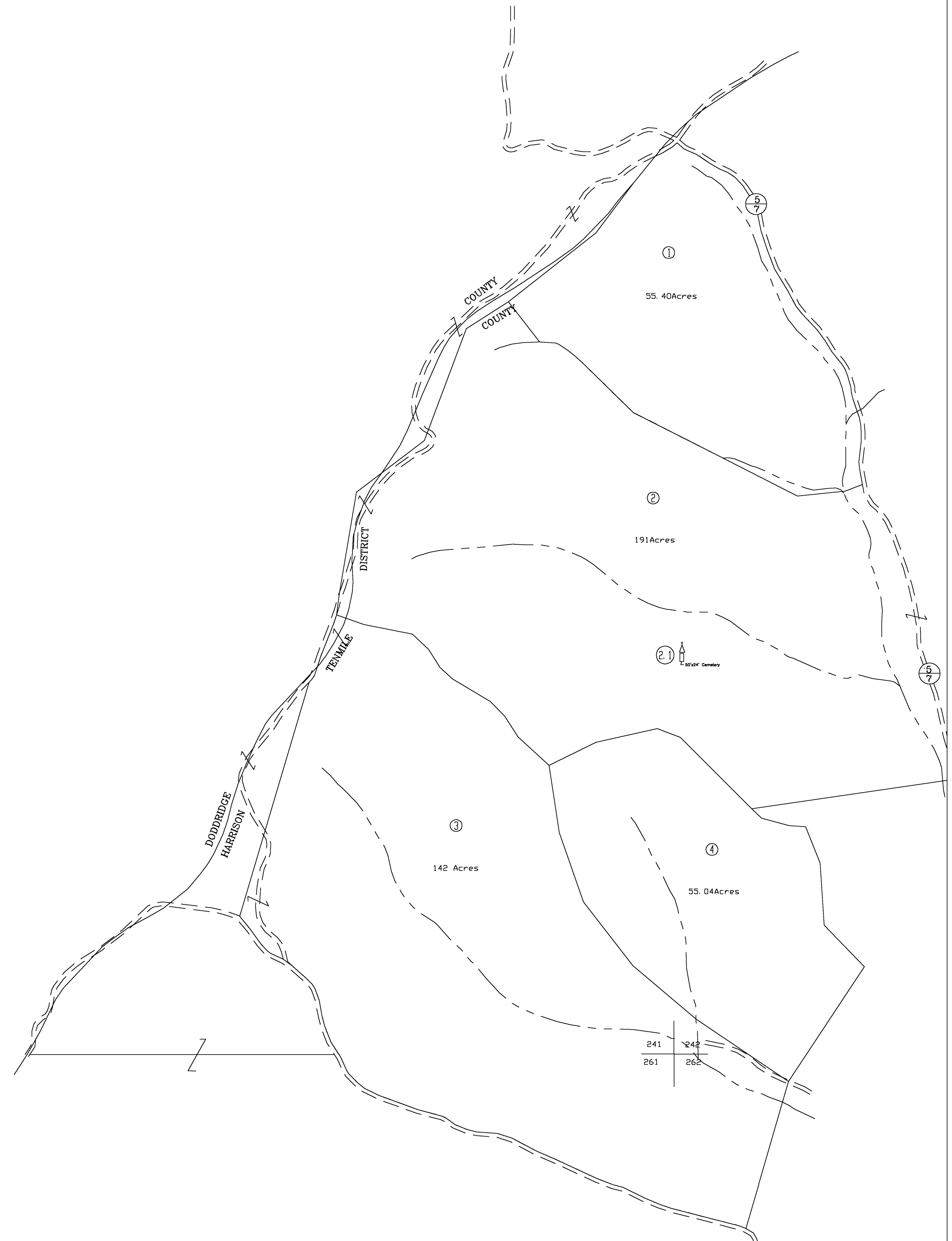
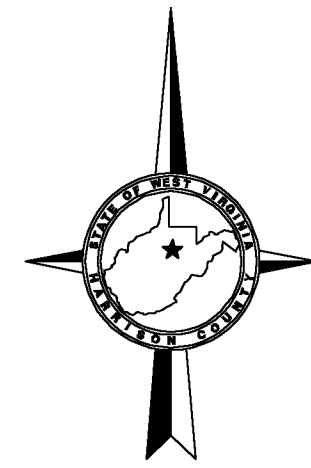


241

241 222
241 242



241
261

241 242
261 262

For Tax Purposes Only

CHERYL L. ROMANO
HARRISON COUNTY ASSESSOR

LEGEND

Property line	—————	Deed lot number	(15)
Edge of pavement or roadway	——— ———	Parcel or Index number	XX
Corporation line	—————	Improvement	o
District line	—————	Railroad	+
County line	—————	Church	Δ
Original lot line	- - - - -	Cemetery	⊕
		Golf Course	⊖
		School	⊠

REVISIONS

1	
2	
3	
4	
5	
6	
7	
8	

RESTRICTION

All tax maps created under the provisions of reappraisal legislation are the property of Harrison County West Virginia and the reproduction, copying distribution or sale of such tax maps or any copies thereof without the written permission of the Harrison County Assessor is prohibited by law.

KEY MAP

	222
241	242
261	262

HARRISON COUNTY
STATE OF WEST VIRGINIA
Office of Assessor

DISTRICT
TENMILE
MAP NO:
241

Date, Aerial Photography: April 1960 Date, Map: Sept. 1960
Photo No: Scale: 1" = 400'