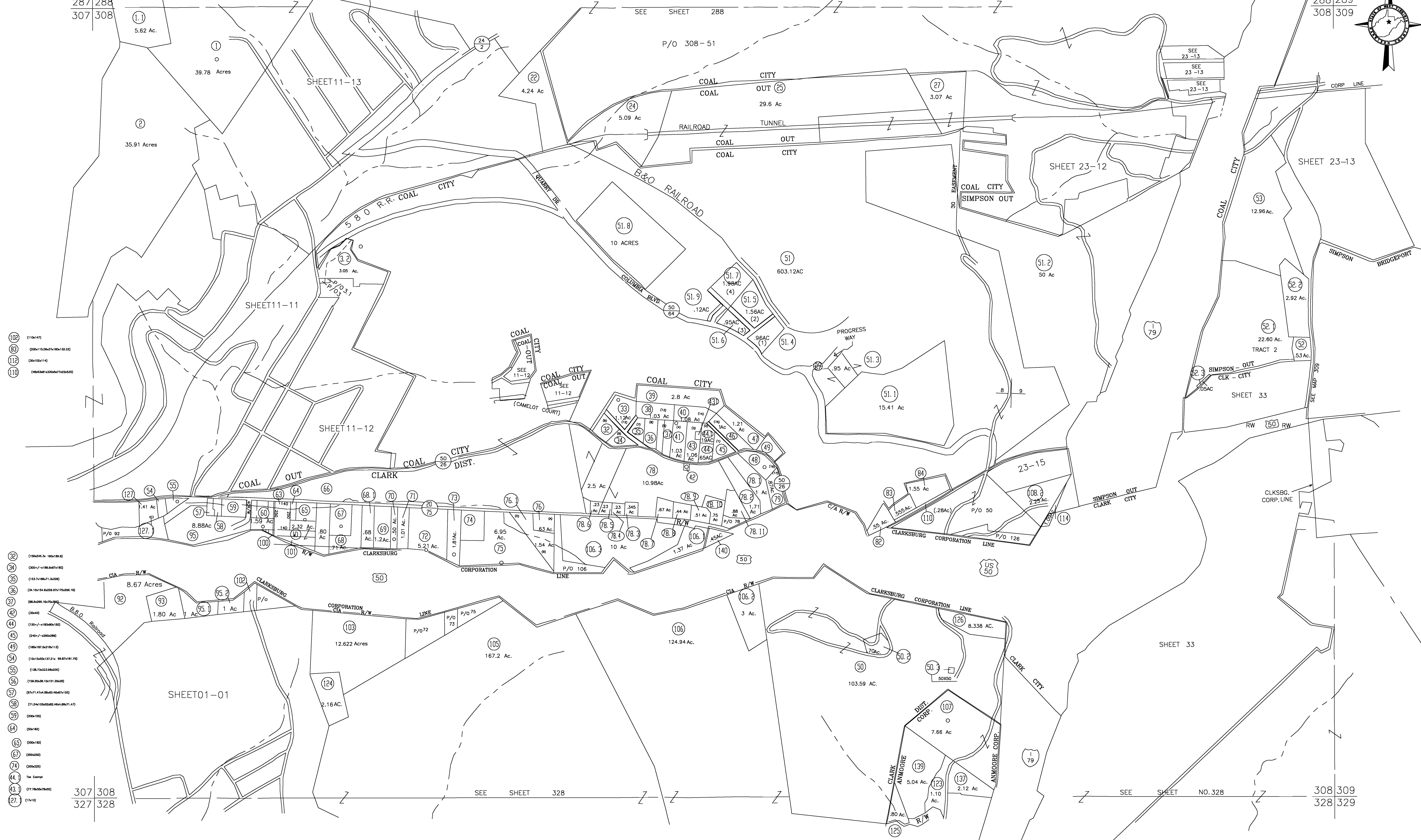
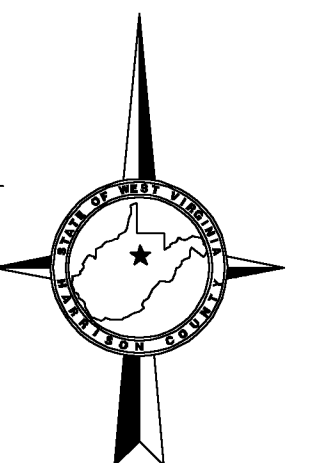


287 288  
307 308

288 289  
308 309



- 102 (150x14)
- 83 (200x15.0x27x10x13.33)
- 112 (20x12x14)
- 110 (4x0.5x1.22x0.5x1.22x0.5)

- 32 (150x15.2x10x10.0)
- 34 (200x11x10x8.7x10)
- 35 (15.7x10x7.1x3.28)
- 36 (24.1x15.4x22.8x17.5x20.6x16)
- 37 (8x6.2x1.8x7.0x10)
- 42 (20x40)
- 44 (120x110x200x100)
- 45 (24x11x120x200)
- 49 (180x107.5x110)
- 54 (10x10x20x107.5x100x101.7)
- 55 (1.36x1.5x2.2x2.8x2.0)
- 56 (158.20x38.10x11.50x40)
- 57 (71.71x14.50x22.40x17.10)
- 58 (71.54x104.52x22.40x14.89x17.1)
- 59 (20x150)
- 64 (20x182)
- 65 (200x182)
- 67 (200x200)
- 74 (200x220)
- 44.1 Tax Exempt
- 43.1 (77.8x50.75x50)
- 27.1 (1x1)

For Tax Purposes Only

**CHERYL L. ROMANO**  
**HARRISON COUNTY ASSESSOR**

**LEGEND**

Property line	—————	Deed lot number	(15)
Edge of pavement or roadway	-----	Parcel or Index number	XX
Corporation line	-----	Improvement	o
District line	-----	Railroad	—+—
County line	-----	Church	+
Original lot line	-----	Cemetery	Δ
		Golf Course	δ
		School	⊕

**REVISIONS**

1
2
3
4
5
6
7
8

**RESTRICTION**

All tax maps created under the provisions of reappraisal legislation are the property of Harrison County West Virginia and the reproduction, copying distribution or sale of such tax maps or any copies thereof without the written permission of the Harrison County Assessor is prohibited by law.

**KEY MAP**

287	288	289
307	308	309
327	328	329

**HARRISON COUNTY**  
**STATE OF WEST VIRGINIA**  
**Office of Assessor**

DISTRICT  
COAL - CLARK - SIMPSON  
MAP NO:  
308

Date, Aerial Photography: April 1960 Date, Map: Sept. 1960  
Photo No: Scale: 1" = 400'