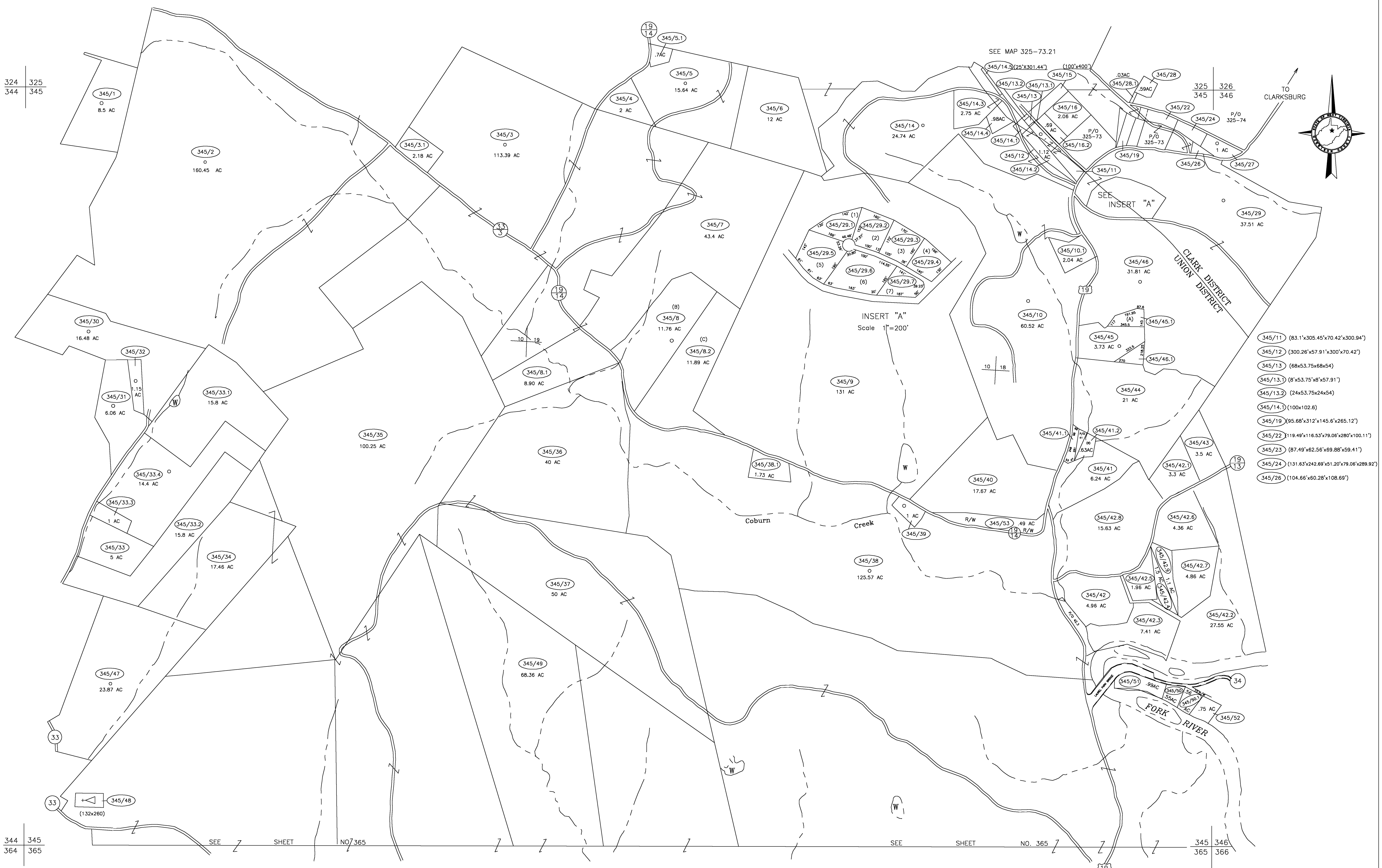
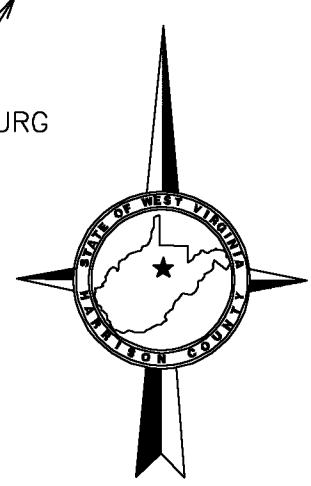


324 325
344 345



325 326
345 346



- 345/11 (83.1'x305.45'x70.42'x300.94')
- 345/12 (300.26'x57.91'x300'x70.42')
- 345/13 (68x53.75x68x54)
- 345/13.1 (8'x53.75'x8'x57.91')
- 345/13.2 (24x53.75x24x54)
- 345/14.1 (100x102.6)
- 345/19 (95.68'x312'x145.6'x265.12')
- 345/22 (119.49'x116.53'x79.06'x280'x100.11')
- 345/23 (87.49'x62.56'x89.88'x59.41')
- 345/24 (131.63'x242.69'x51.20'x79.06'x289.92')
- 345/26 (104.66'x60.28'x108.69')

344 345
364 365

345 346
365 366

SEE SHEET NO. 365

SEE SHEET NO. 365

For Tax Purposes Only

CHERYL L. ROMANO
HARRISON COUNTY ASSESSOR

LEGEND

| | | | |
|-----------------------------|-----------|------------------------|------|
| Property line | ————— | Deed lot number | (15) |
| Edge of pavement or roadway | - - - - - | Parcel or Index number | XX |
| Corporation line | ————— | Improvement | o |
| District line | ————— | Railroad | —+— |
| County line | - - - - - | Cemetery | Δ |
| Original lot line | - - - - - | Golf Course | δ |
| | | School | ⬢ |

REVISIONS

| |
|---|
| 1 |
| 2 |
| 3 |
| 4 |
| 5 |
| 6 |
| 7 |
| 8 |

RESTRICTION

All tax maps created under the provisions of reappraisal legislation are the property of Harrison County West Virginia and the reproduction, copying distribution or sale of such tax maps or any copies thereof without the written permission of the Harrison County Assessor is prohibited by law.

KEY MAP

| | | |
|-----|-----|-----|
| 324 | 325 | 326 |
| 344 | 345 | 346 |
| 364 | 365 | 366 |

HARRISON COUNTY
STATE OF WEST VIRGINIA
Office of Assessor

DISTRICT
UNION - CLARK
MAP NO:
345

Date, Aerial Photography: April 1960 Date, Map: Sept. 1960
Photo No: Scale: 1" = 400'