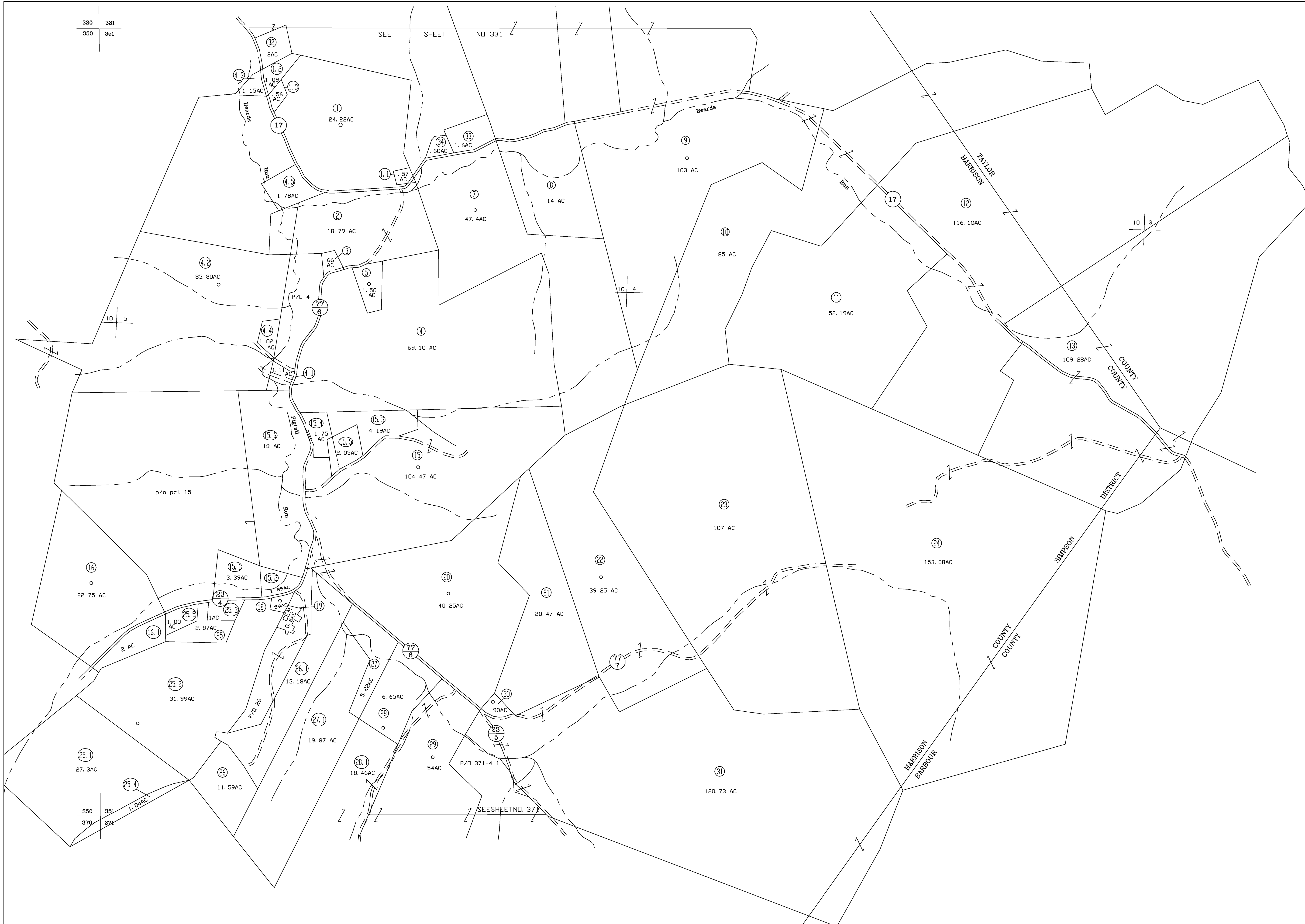
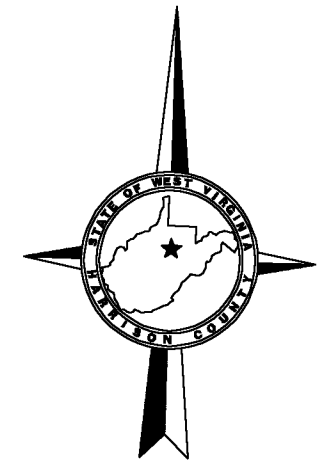


330 331
350 351

331
351



350 351
370 371

351
371

For Tax Purposes Only

CHERYL L. ROMANO
HARRISON COUNTY ASSESSOR

LEGEND

Property line	—————	Deed lot number	(15)
Edge of pavement or roadway	- - - - -	Parcel or Index number	XX
Corporation line	—————	Improvement	o
District line	—————	Railroad	—+—
County line	- - - - -	Church	+
Original lot line	- - - - -	Cemetery	Δ
		Golf Course	δ
		School	⊞

REVISIONS

1	
2	
3	
4	
5	
6	
7	
8	

RESTRICTION

All tax maps created under the provisions of reappraisal legislation are the property of Harrison County West Virginia and the reproduction, copying distribution or sale of such tax maps or any copies thereof without the written permission of the Harrison County Assessor is prohibited by law.

KEY MAP

330	331
350	351
370	371

HARRISON COUNTY
STATE OF WEST VIRGINIA
Office of Assessor

DISTRICT
SIMPSON
MAP NO:
351

Date, Aerial Photography: April 1960 Date, Map: Sept. 1960
Photo No: Scale: 1" = 400'