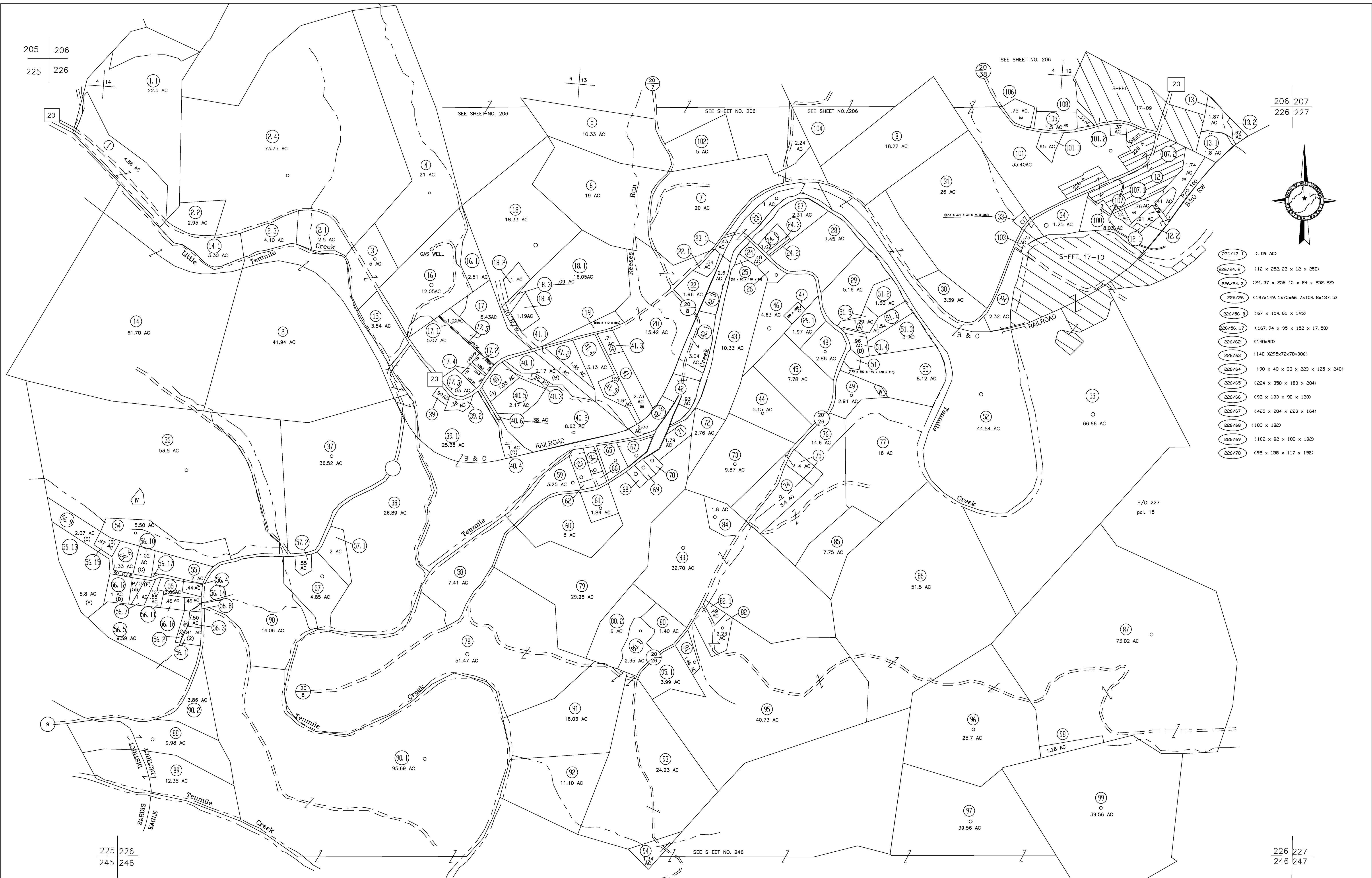


205 | 206
225 | 226

206 | 207
226 | 227



- 226/12.1 (1.09 AC)
- 226/24.2 (12 x 252.22 x 12 x 250)
- 226/24.3 (24.37 x 256.45 x 24 x 252.22)
- 226/26 (197x149.1x75x66.7x104.8x137.5)
- 226/36.8 (67 x 154.61 x 145)
- 226/36.17 (167.94 x 95 x 152 x 17.50)
- 226/62 (140x90)
- 226/63 (140 X295x72x78x306)
- 226/64 (90 x 40 x 30 x 223 x 125 x 240)
- 226/65 (224 x 358 x 183 x 284)
- 226/66 (93 x 133 x 90 x 120)
- 226/67 (425 x 284 x 223 x 164)
- 226/68 (100 x 182)
- 226/69 (102 x 82 x 100 x 182)
- 226/70 (92 x 158 x 117 x 192)

For Tax Purposes Only
CHERYL L. ROMANO
HARRISON COUNTY ASSESSOR

LEGEND	
Property line	—————
Edge of pavement or roadway	—————
Corporation line	—————
District line	—————
County line	—————
Original lot line	—————
Deed lot number	(15)
Parcel or Index number	XX
Improvement	o
Railroad	—————
Church	+
Cemetery	Δ
Golf Course	δ
School	⊕

REVISIONS	
1	
2	
3	
4	
5	
6	
7	
8	

RESTRICTION
All tax maps created under the provisions of reappraisal legislation are the property of Harrison County West Virginia and the reproduction, copying distribution or sale of such tax maps or any copies thereof without the written permission of the Harrison County Assessor is prohibited by law.

KEY MAP		
205	206	207
225	226	227
245	246	247

HARRISON COUNTY
STATE OF WEST VIRGINIA
Office of Assessor

DISTRICT
EAGLE
MAP NO:
226
Date, Aerial Photography: April 1960 Date, Map: Sept. 1960
Photo No: Scale: 1" = 400'