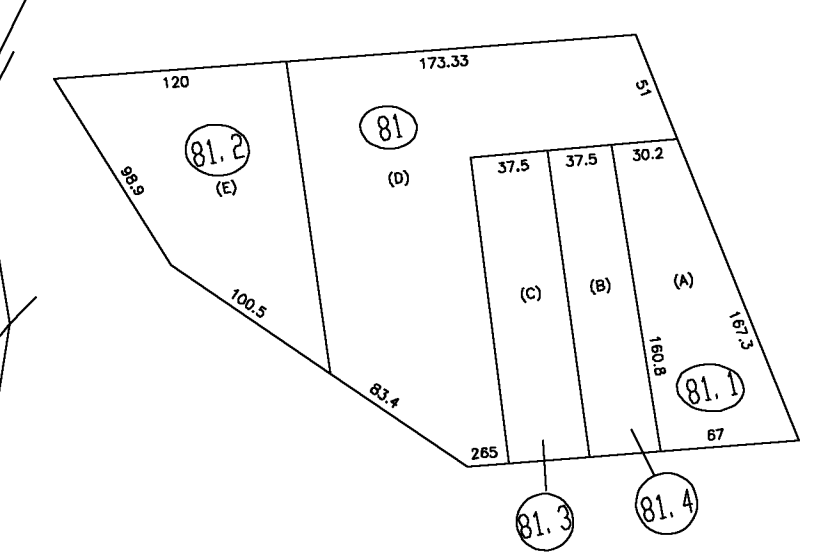
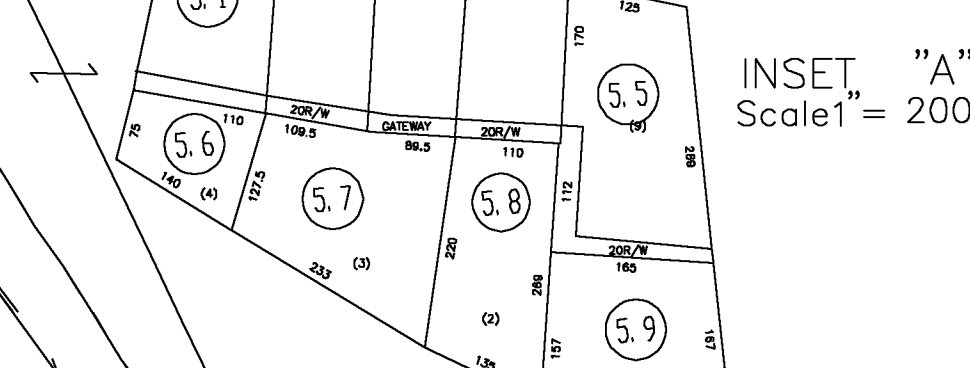
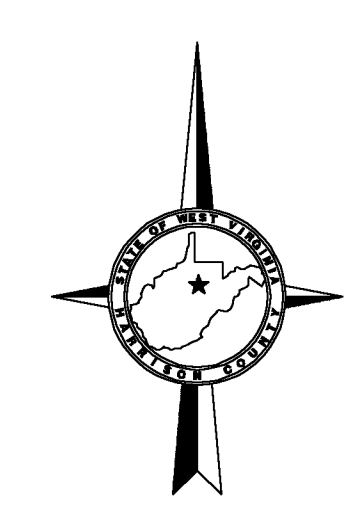


- 267/52 (201.26x50x214.5x54.5)
- 267/53 (201x139.9x270x166)
- 267/54 (87x229.7x74.8x211.2)
- 267/56 (155.8x140x200.1x201.8)
- 267/66 (137x188.1x124.2x198.2)
- 267/67 (141x196.2x108.3x205.2)
- 267/68 (129x205.27x109.6x181.8)
- 267/70 (113x181.9x26.9x78.1x180)
- 267/71 (131x180x142.3x166.3)
- 267/72 (116x196.3x126.6x67.3x150)
- 267/73 (119x158x180.75x178.17)
- 267/74 (179.17x168.3x66.9x179.9x118)
- 267/110 (41.8x175.6x129.95x202.2x222.31x135)
- 267/119 .AC
- 267/119.1 .AC
- 267/120.1 (273.8x74.4x309x25.2)
- 267/120.2 (100x79x75)
- 267/121 (35.1x81x100x77.4)
- 267/122 (0.2 AC)
- 267/122.1 (106.6x184x134)
- 267/147 (82x188)
- 267/153 (132x33x330x86x165)



For Tax Purposes Only

CHERYL L. ROMANO
HARRISON COUNTY ASSESSOR

LEGEND	
Property line	—————
Edge of pavement or roadway	—————
Corporation line	—————
District line	—————
County line	—————
Original lot line	—————
Deed lot number	(15)
Parcel or Index number	XX
Improvement	o
Railroad	—————
Church	+
Cemetery	Δ
Golf Course	δ
School	⊕

REVISIONS	
1	
2	
3	
4	
5	
6	
7	
8	

RESTRICTION

All tax maps created under the provisions of reappraisal legislation are the property of Harrison County West Virginia and the reproduction, copying distribution or sale of such tax maps or any copies thereof without the written permission of the Harrison County Assessor is prohibited by law.

KEY MAP		
246	247	248
266	267	268
286	287	288

HARRISON COUNTY
STATE OF WEST VIRGINIA
 Office of Assessor

DISTRICT
 COAL - EAGLE
 MAP NO:
 267

Date, Aerial Photography: April 1960 Date, Map: Sept. 1960
 Photo No: Scale: 1" = 400'