

HARRISON COUNTY ASSESSOR

CHERYL L. ROMANO

For Tax Purposes Only

- Property line
- Edge of pavement or roadway
- Depreciation line
- District line
- County line
- Original lot line

- Deed lot number
- Improvement
- Railroad
- Church
- Cemetery
- Golf Course
- School

0
XX
(15)

1
2
3
4
5
6
7
8

REVISIONS

RESTRICTION

KEY MAP

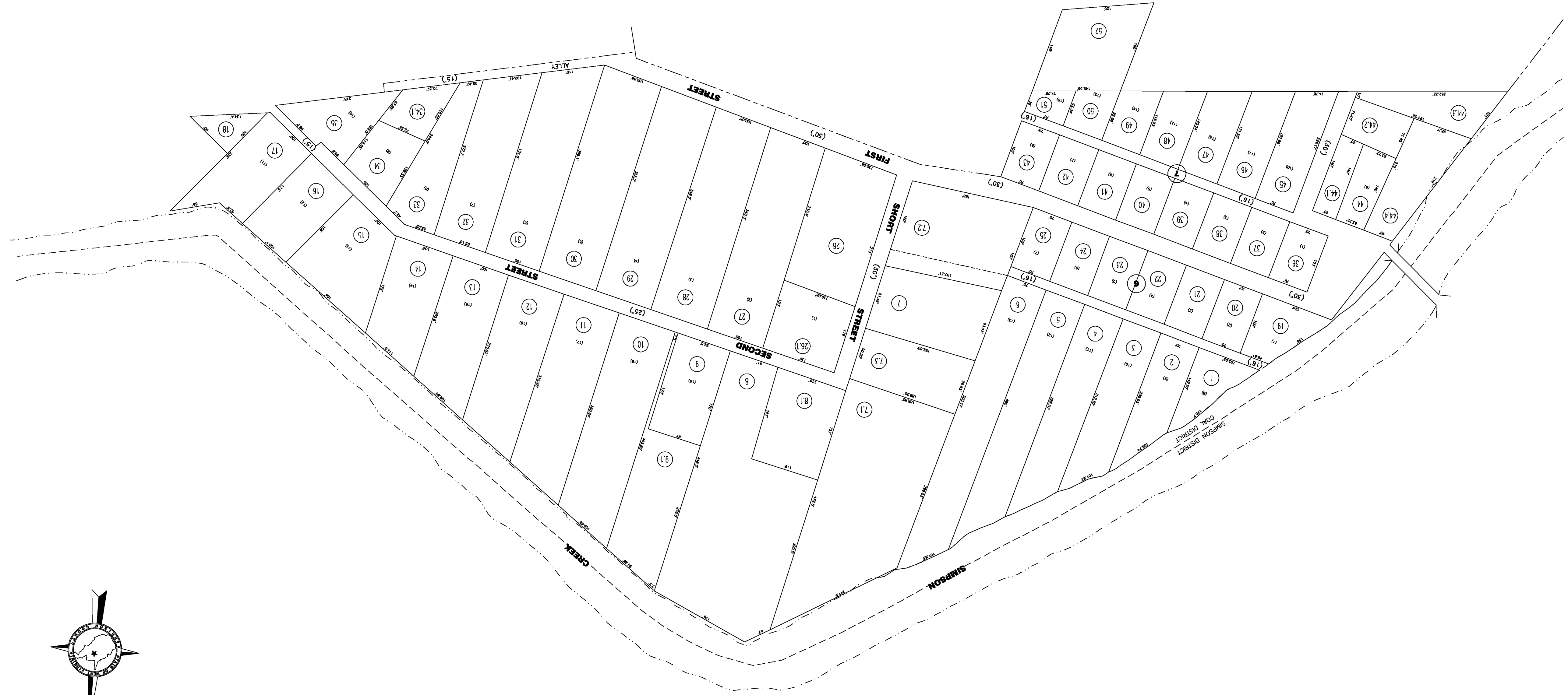
2305	2305
1108	268
268	

All tax maps created under the provisions of reappraisal legislation are the property of Harrison County West Virginia and the reproduction, copying, distribution or sale of such tax maps or any copies thereof without the written permission of the Harrison County Assessor is prohibited by law.

HARRISON COUNTY
STATE OF WEST VIRGINIA
Office of Assessor

DISTRICT
COAL - OUTSIDE
MAP NO: 11-08
11-08

Date/Aerial Photography: April 1960 Date, Map: Sept. 1960
Photo No: Scale: 1" = 100'



NEW QUARTERS SUB-DIVISION