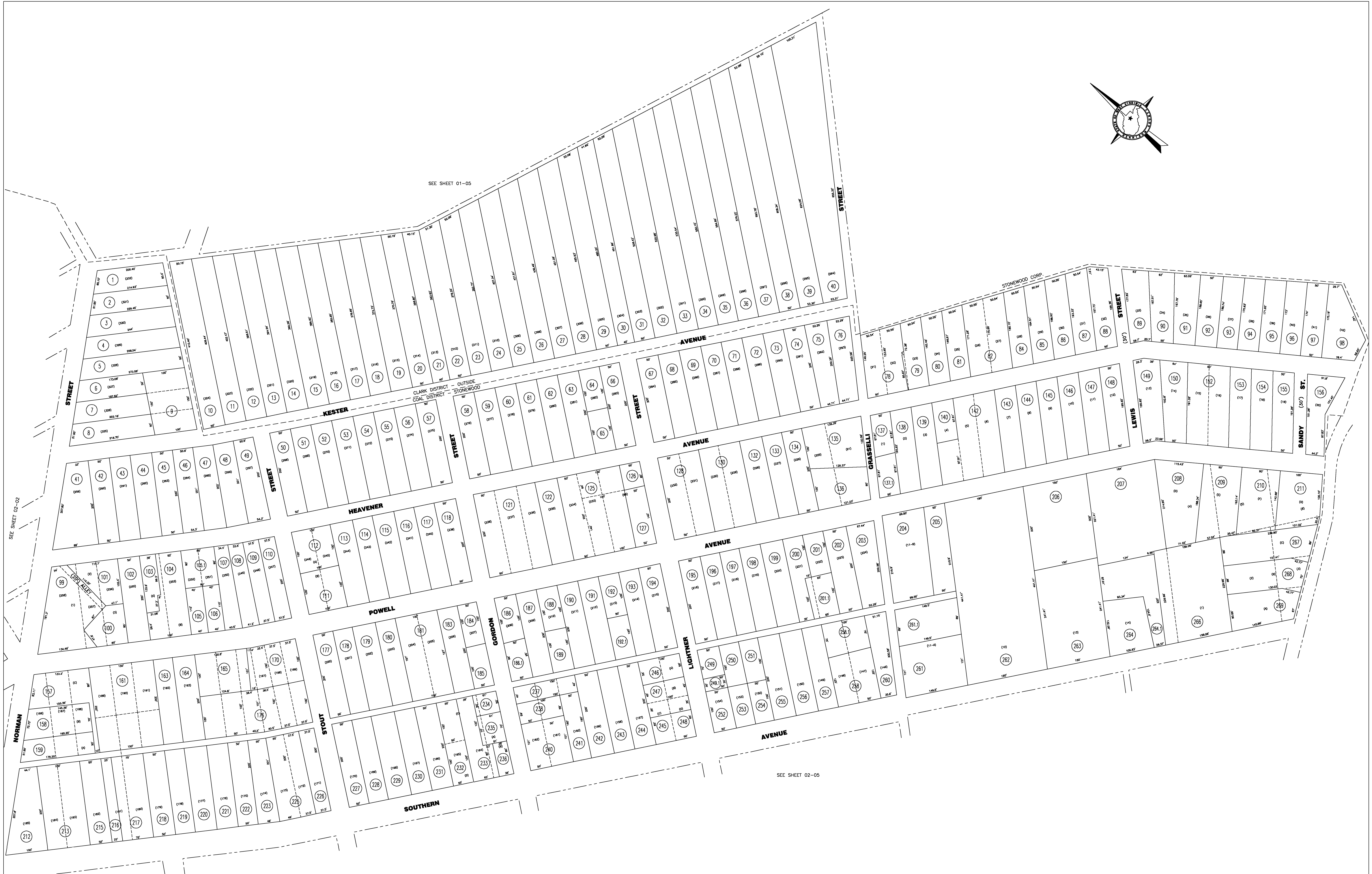


SEE SHEET 01-05



SEE SHEET 02-02

SEE SHEET 02-05

For Tax Purposes Only

CHERYL L. ROMANO
HARRISON COUNTY ASSESSOR

LEGEND	
Property line	— (15)
Edge of pavement or roadway	— (XX)
Corporation line	— (o)
District line	—
County line	—
Original lot line	—
Deed lot number	(15)
Parcel or Index number	(XX)
Improvement	o
Railroad	—
Church	+
Cemetery	Δ
Golf Course	o
School	⊞

REVISIONS	
1	
2	
3	
4	
5	
6	
7	
8	

RESTRICTION

All tax maps created under the provisions of reappraisal legislation are the property of Harrison County West Virginia and the reproduction, copying distribution or sale of such tax maps or any copies thereof without the written permission of the Harrison County Assessor is prohibited by law.

KEY MAP	
0105	
0204	
0205	

HARRISON COUNTY
STATE OF WEST VIRGINIA
Office of Assessor

DISTRICT
CLARK - STONEMOOD
CLARK - OUTSIDE
MAP NO:
02-04
Date, Aerial Photography: April 1960 Date, Map: Sept. 1960
Photo No: Scale: 1" = 100'