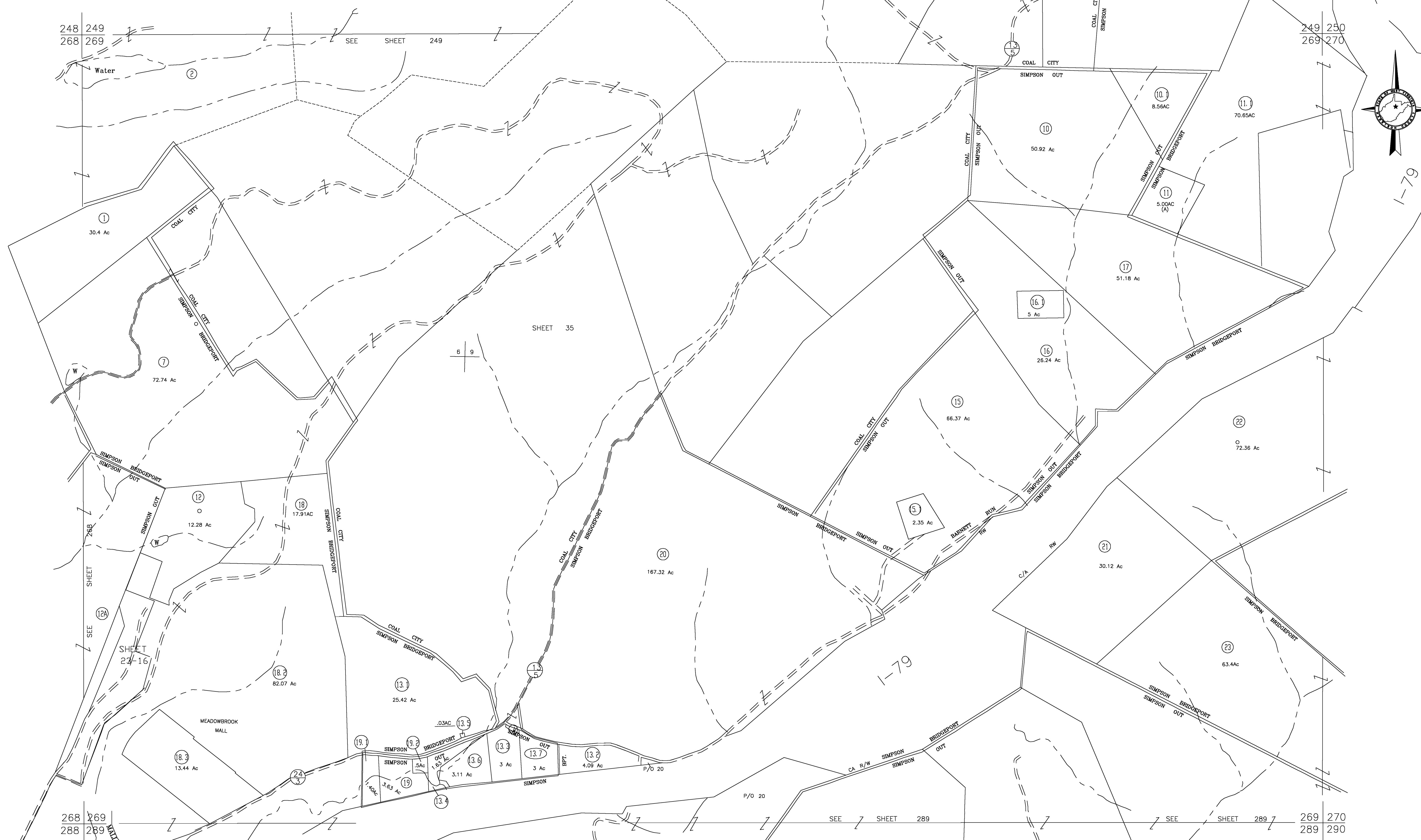


248 249
268 269

SEE SHEET 249

249 250
269 270



SHEET 35

SHEET 23-16

268 269
288 289

SEE SHEET 289

SEE SHEET 289

269 270
289 290

For Tax Purposes Only

CHERYL L. ROMANO
HARRISON COUNTY ASSESSOR

LEGEND	
Property line	—————
Edge of pavement or roadway	- - - - -
Corporation line	—————
District line	—————
County line	- - - - -
Original lot line	- - - - -
Deed lot number	(15)
Parcel or Index number	XX
Improvement	o
Railroad	—————
Church	+
Cemetery	Δ
Golf Course	δ
School	⬠

REVISIONS	
1	
2	
3	
4	
5	
6	
7	
8	

RESTRICTION

All tax maps created under the provisions of reappraisal legislation are the property of Harrison County West Virginia and the reproduction, copying distribution or sale of such tax maps or any copies thereof without the written permission of the Harrison County Assessor is prohibited by law.

KEY MAP		
248	249	250
268	269	270
288	289	290

HARRISON COUNTY
STATE OF WEST VIRGINIA
Office of Assessor

DISTRICT
SIMPSON
MAP NO:
269

Date, Aerial Photography: April 1960 Date, Map: Sept. 1960
Photo No: Scale: 1" = 400'