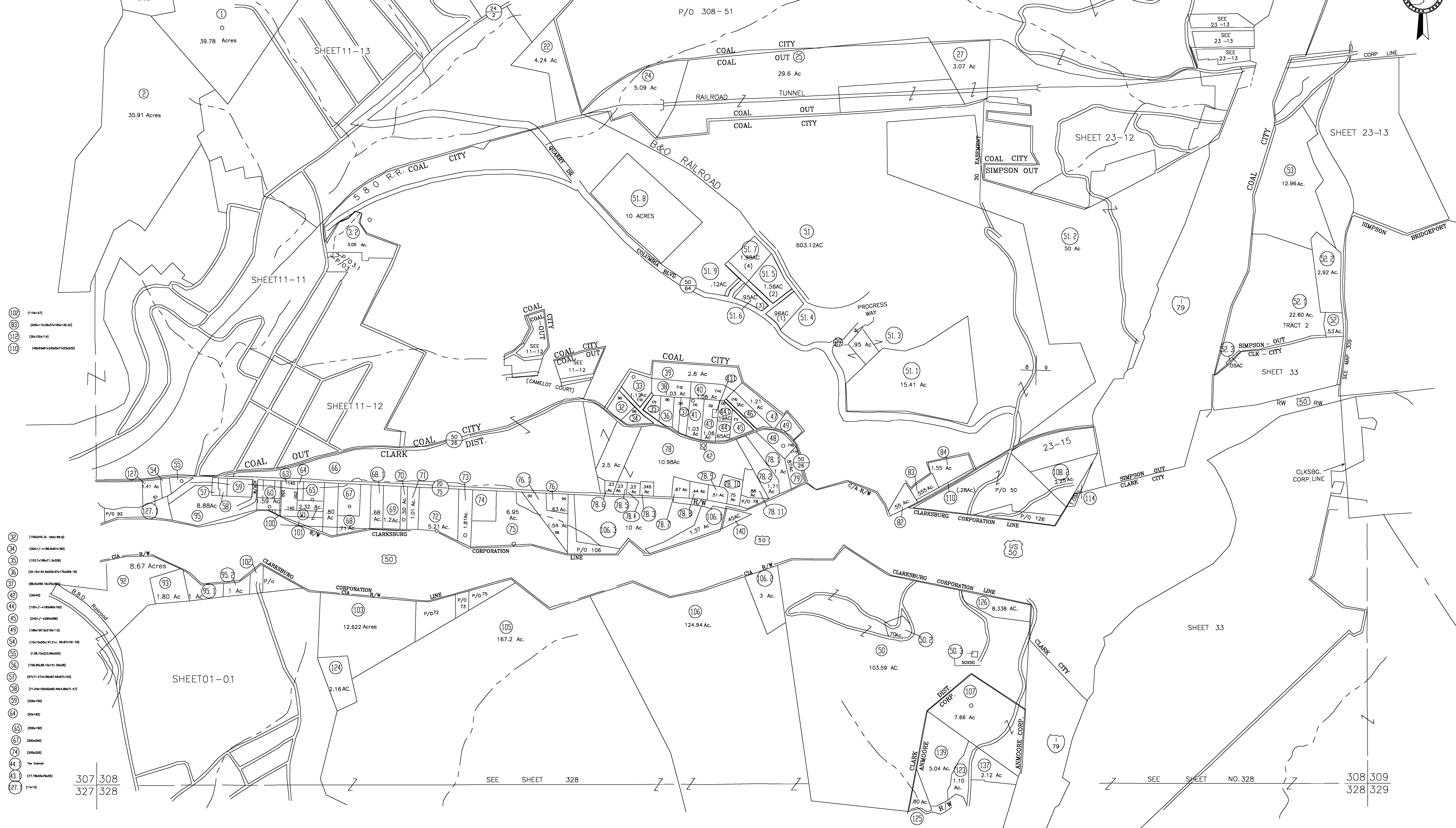
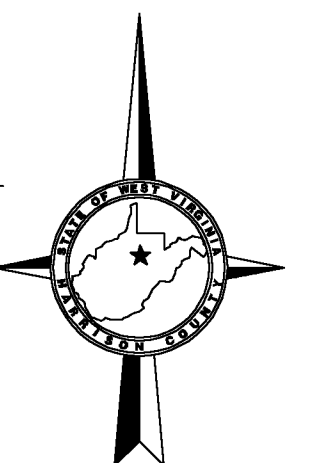


287 288
307 308

288 289
308 309



- 102 (150x14)
- 83 (200x15.0x27x10x13.33)
- 112 (20x12x14)
- 110 (4x0.5x1.25x0.5x1.25x0.5)

- 32 (150x45.5x 150x150)
- 34 (200x7x100x67x100)
- 35 (153.7x100x71.3x200)
- 36 (24.1x154.6x228.0x175x200.1x)
- 37 (90x200x 150x70x100)
- 42 (20x40)
- 44 (150x7x100x200x100)
- 45 (240x7x100x200)
- 49 (100x157.5x215x110)
- 54 (10x150x20x137.5x 90.8x150x170)
- 55 (1.36.7x223.8x200)
- 56 (158.20x30.10x151.20x20)
- 57 (57.71x15.30x22.40x7x150)
- 58 (71.25x150x200x2.4x1.8x71.4)
- 59 (20x150)
- 64 (20x152)
- 65 (200x150)
- 67 (200x200)
- 74 (200x220)
- 44.1 Tax Exempt
- 43.1 (77.70x50x70x50)
- 27.1 (1x10)

307 308
327 328

SEE SHEET NO. 328

308 309
328 329

For Tax Purposes Only

CHERYL L. ROMANO
HARRISON COUNTY ASSESSOR

LEGEND

Property line	—————	Deed lot number	(15)
Edge of pavement or roadway	-----	Parcel or Index number	XX
Corporation line	-----	Improvement	o
District line	-----	Railroad	—+—
County line	-----	Church	+
Original lot line	-----	Cemetery	Δ
		Golf Course	δ
		School	⊕

REVISIONS

1
2
3
4
5
6
7
8

RESTRICTION

All tax maps created under the provisions of reappraisal legislation are the property of Harrison County West Virginia and the reproduction, copying distribution or sale of such tax maps or any copies thereof without the written permission of the Harrison County Assessor is prohibited by law.

KEY MAP

287	288	289
307	308	309
327	328	329

HARRISON COUNTY
STATE OF WEST VIRGINIA
Office of Assessor

DISTRICT
COAL - CLARK - SIMPSON
MAP NO:
308

Date, Aerial Photography: April 1960 Date, Map: Sept. 1960
Photo No: Scale: 1" = 400'