



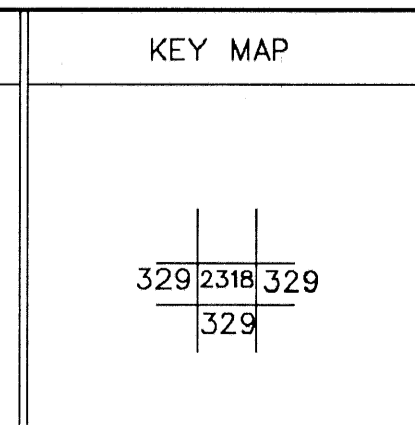
For Tax Purposes Only  
 Prepared by  
**CHERYL L. ROMANO**  
 HARRISON COUNTY ASSESSOR

LEGEND	
Property line	—
Edge of pavement or roadway	- - - -
Corporation line	—+—+—+—+—
District line	- - - - -
County line	—+—+—+—+—
Original lot line	- - - - -
Deed lot number	(15)
Parcel or index number	XX/XX
Improvement	o
Railroad	—+—+—+—+—

REVISIONS	
1	
2	
3	
4	
5	
6	
7	
8	

**RESTRICTION**

All tax maps created under the provisions of reappraisal legislation are the property of Harrison County West Virginia and the reproduction, copying, distribution or sale of such tax maps or any copies thereof without the written permission of the Harrison County Assessor is prohibited by law.



**HARRISON COUNTY**  
 STATE OF WEST VIRGINIA  
 Office of Assessor

DISTRICT  
**SIMPSON-OUTSIDE**  
 MAP NO:  
**23-18**

Date, Aerial Photography  
 Photo No:

Date, Map: xxxxxxxx  
 Scale: 1" = 100'