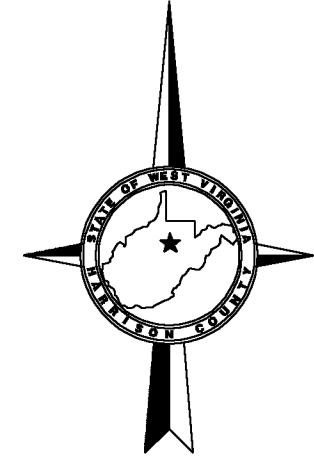
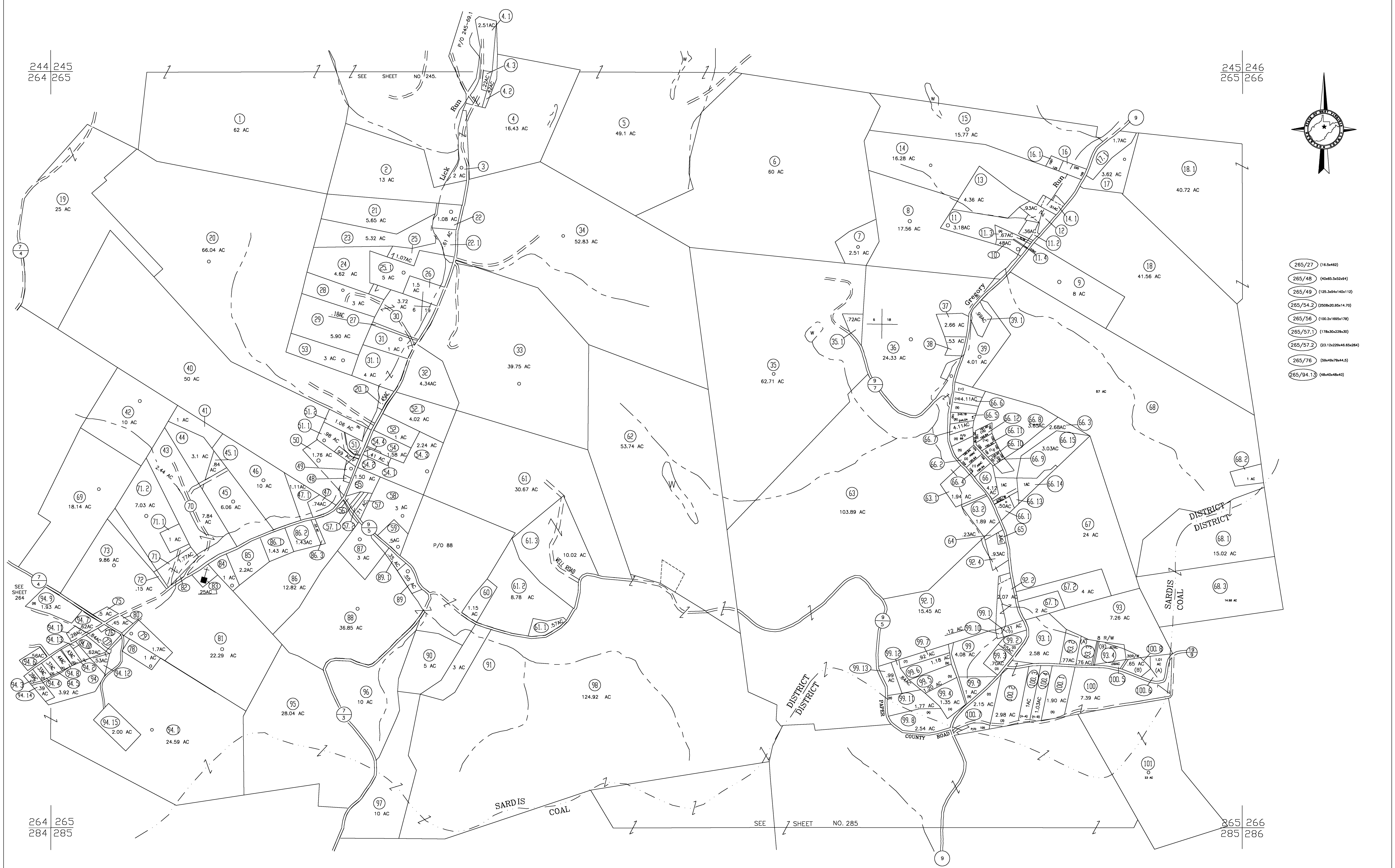


244 245  
264 265

245 246  
265 266



- (265/27) (16.5+42)
- (265/48) (40+65.5+2+94)
- (265/49) (125.3+94+1+11)
- (265/54.2) (250+20.85+14.7)
- (265/56) (100.2+195+178)
- (265/57.1) (178+20+229+30)
- (265/57.2) (23.12+229+48.65+284)
- (265/76) (59+49+78+44.2)
- (265/94.13) (48+40+46+40)



264 265  
284 285

265 266  
285 286

For Tax Purposes Only

**CHERYL L. ROMANO**  
**HARRISON COUNTY ASSESSOR**

**LEGEND**

Property line	—————	Deed lot number	(15)
Edge of pavement or roadway	-----	Parcel or Index number	XX
Corporation line	-----	Improvement	o
District line	-----	Railroad	—+—
County line	-----	Church	+
Original lot line	- - - - -	Cemetery	Δ
		Golf Course	⊞
		School	⊞

**REVISIONS**

1	
2	
3	
4	
5	
6	
7	
8	

**RESTRICTION**

All tax maps created under the provisions of reappraisal legislation are the property of Harrison County West Virginia and the reproduction, copying distribution or sale of such tax maps or any copies thereof without the written permission of the Harrison County Assessor is prohibited by law.

**KEY MAP**

244	245	246
264	265	266
284	285	286

**HARRISON COUNTY**  
**STATE OF WEST VIRGINIA**  
**Office of Assessor**

DISTRICT  
SARDIS - COAL  
MAP NO:  
265

Date, Aerial Photography: April 1960 Date, Map: Sept. 1960  
Photo No: Scale: 1" = 400'