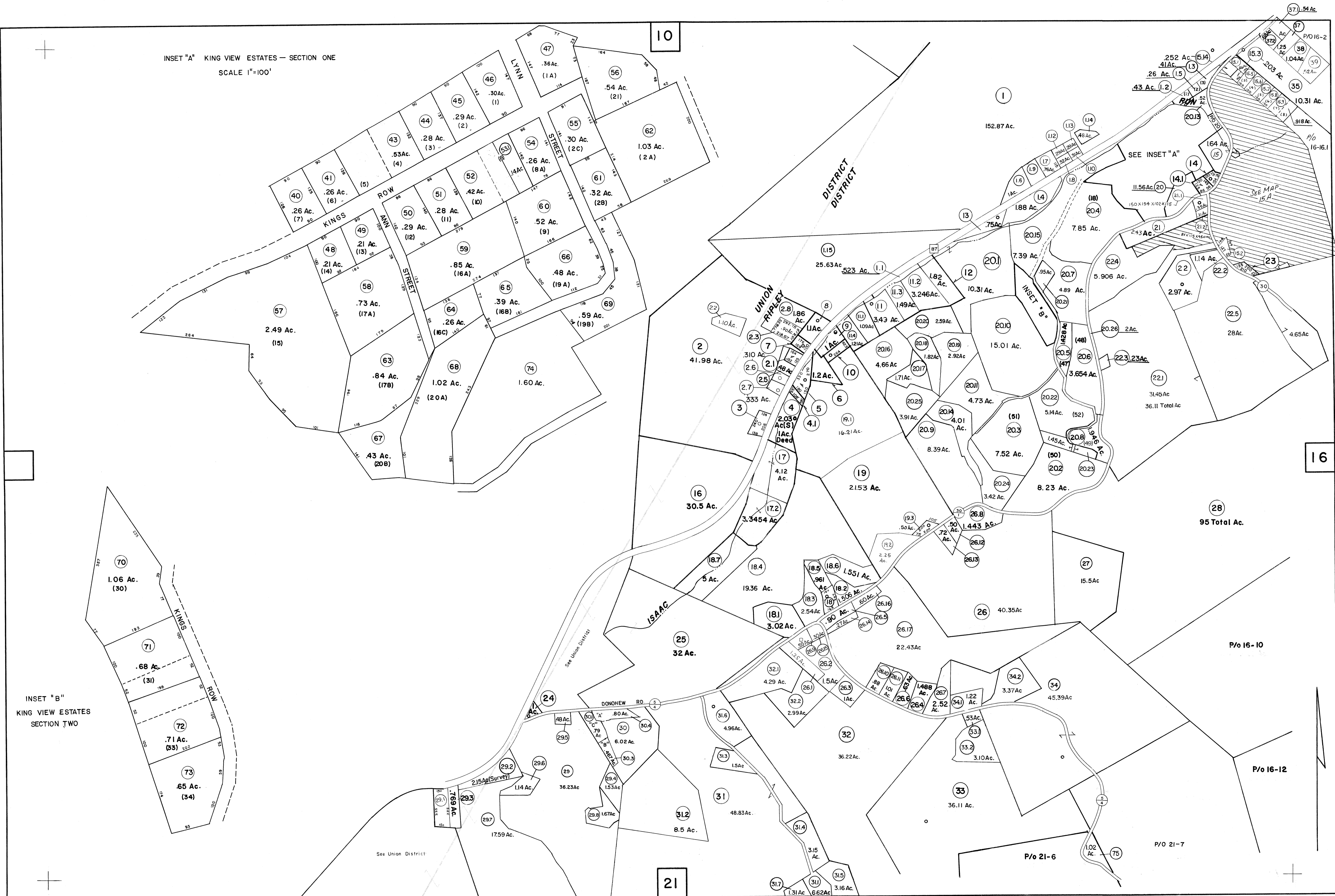


INSET "A" KING VIEW ESTATES — SECTION ONE
SCALE 1"=100'

INSET "B"
KING VIEW ESTATES
SECTION TWO



Legend

Property line	—	Original lot line	—
Edge of pavement or roadway	---	Deed lot number in parenthesis	(15)
Corporation line	----	Parcel or index number in circle	⊙
District line	-----	Improvement	○
County line	++++	Railroad	+

Revisions

1	HICKMAN	JUNE 73	PAM	9	OGIS	3-25-91	J.B	18	OGIS	4/17/99	SAJ
2		2-2-76	T.G	10	O.G.I.S			18		4-00	HD
3		7-7-77	D.H.	11	OGIS	3/2/91		18		6/12/2001	S.B.H
4		1/15/80		12	OGIS	5/8/93		20		4/17/2002	S.B.H
5		Revised to 5-1-88		13	OGIS	3/20/94	SAJ	21		3/21/2003	S.B.H
6		7/1/85	R.L.B	14	OGIS	4-96	HD	22		6-14-04	H.S.S
7		Revised to 7-1-86		15	OGIS	4-97	HD	23		6-16-05	H.S.S
8		Revised to 7-1-88		16	OGIS	5-98	HD	24		5/30/06	S.B.H

5/2/07 S.B.H
4-12-10 H.S.S
4-30-12 H.S.S
4-14-13 H.S.S
5-25-15 H.S.S
4/9/16 S.B.H
3/8/17 S.L.S

JACKSON COUNTY — WEST VIRGINIA
Office of Assessor

FOR TAX PURPOSES ONLY

PREPARED BY
AERO SERVICE CORPORATION
210 E. COURTLAND STREET PHILADELPHIA, PENNA.

RIPLEY DISTRICT

City — Town — District:

Map No: **15**
Date, Aerial Photography: 11-26-62 Date, Map: 2-11-65
Photo No: 2-1506-1508 3-1553-1555 Scale: 1" = 400'