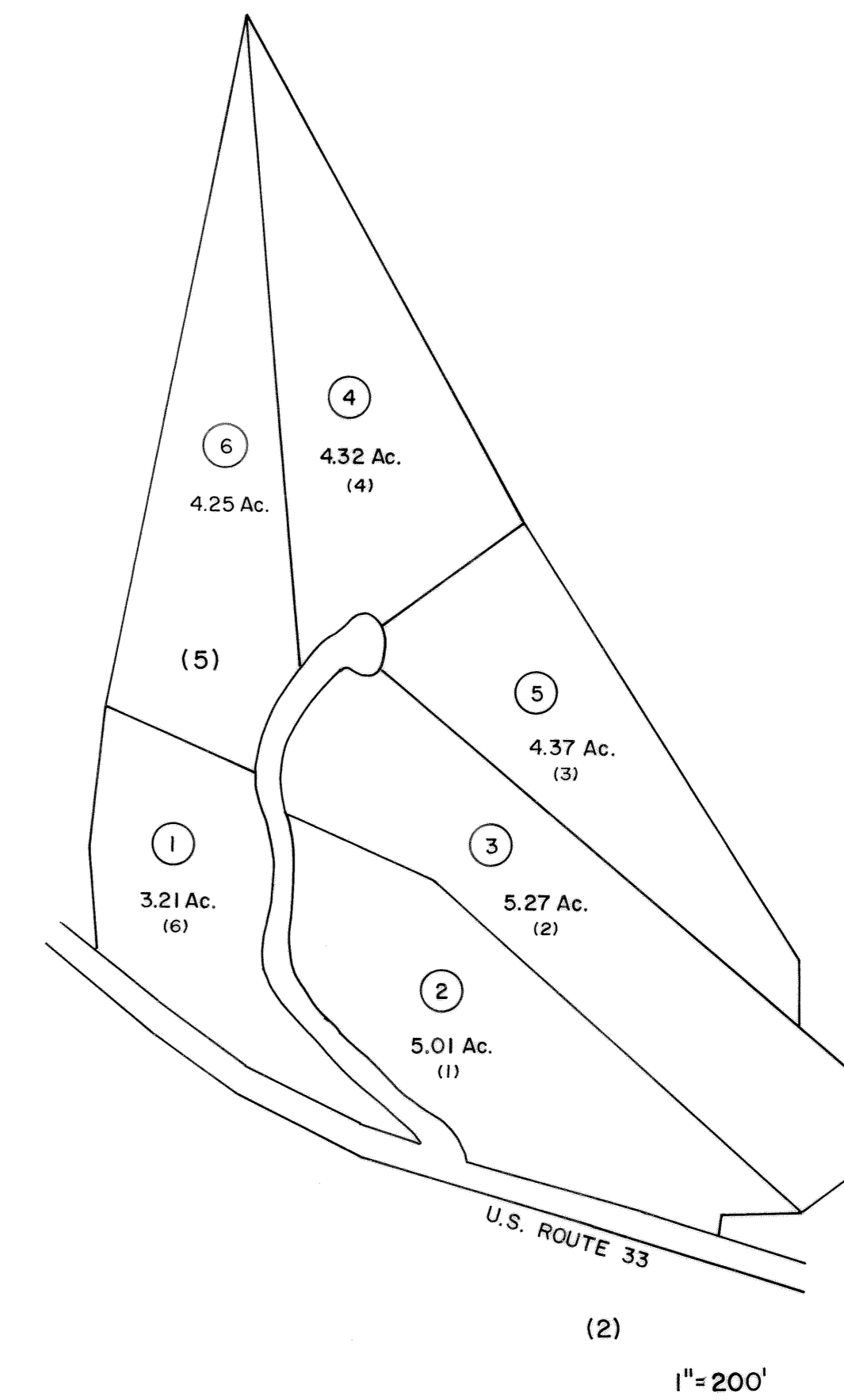


(1)



1" = 200'

For Tax Purposes Only

Prepared by
STATE TAX DEPARTMENT
STATE TAX COMMISSIONER
CHARLESTON, WV.

LEGEND

Property line	—	Original lot line	- - - - -
Edge of pavement or roadway	—	Deed lot number	(15)
Corporation line	- - - - -	Parcel or index number	(99)
District line	- - - - -	Improvement	o
County line	- - - - -	Railroad	—+—
State line	- - - - -	Scaled dimension	(S)
Land hook	—	Deed dimension	(D)
Water	~ ~ ~ ~ ~	Calculated area	(C)

REVISIONS

New Map to 7-1-88 DR 2-28-89 DEF.			
O.G.I.S	3-13-95	J.E.B	
OGIS	4-97	HD	
	4/17/2002	S & H	
	3/19/2003	S & H	

RESTRICTION

All tax maps created under the provisions of reappraisal legislation are the property of the State of West Virginia and the reproduction, copying, distribution or sale of such tax maps or any copies thereof without the written permission of the State Tax Commissioner is prohibited by law.

KEY MAP

19	19	19
19	19A	19
19	19	19

JACKSON COUNTY—WEST VIRGINIA

Office of Assessor

RIPLEY DISTRICT

19-A

Date, Aerial Photography:
Photo No:

Date, Map:
Scale: 1" = 100'