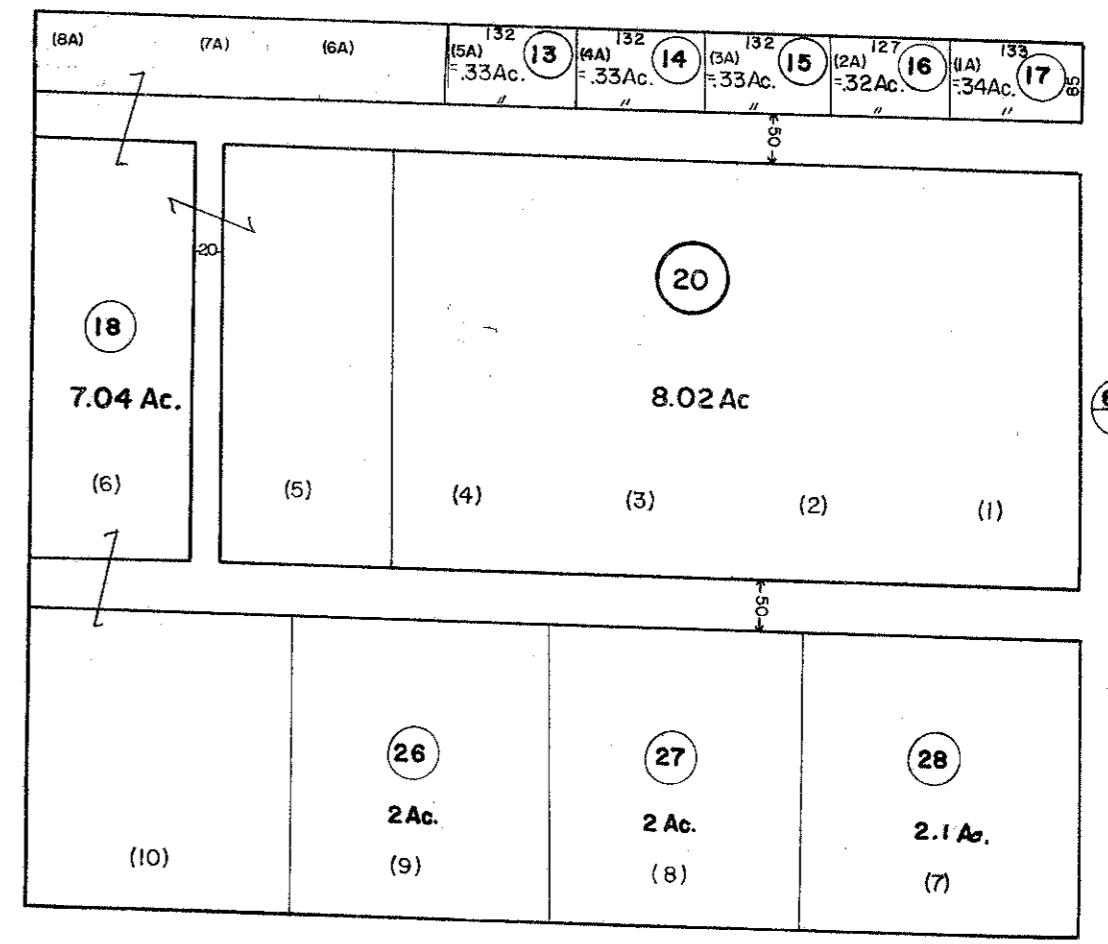


J. R. TRIBETT  
SECTION FIVE  
SCALE 1" = 200'



FOR TAX PURPOSES ONLY  
PREPARED BY  
**AERO SERVICE CORPORATION**  
210 E. COURTLAND STREET PHILADELPHIA, PENNA.

**Legend**

Property line	-----	Original lot line	-----
Edge of pavement or roadway	-----	Deed lot number in parenthesis	(15)
Corporation line	-----	Parcel or index number in circle	⊙
District line	-----	Improvement	○
County line	-----	Railroad	+++++

**Revisions**

1	1-29-76	DS	9	OGIS	5/11/93	DSH	17	5-12-09	H&S
2	7/77	T.G.	10	OGIS	4/18/96	SAJ	18	4-30-08	H&S
3	1/2/80	WJ	11	OGIS	4-97	HD	19	4-25-14	H&S
4	7-1-83	L.E.S.	12	OGIS	5/2/98	SAJ	20	4-26-16	H&S
5	7-1-84	L.E.S.	13		5/21/2001	S&H	21		
6	July, 1986	TRL	14		4/6/2002	S&H	22		
7	REV. TO 7-1-89	REB	15		4-17-03	H&S	23		
8	REVISED TO 7-1-89	REB	16		5/29/06	H&S	24		

**JACKSON COUNTY — WEST VIRGINIA**  
Office of Assessor

**UNION DISTRICT**  
City — Town — District:  
**2**  
Map No:  
Date, Aerial Photography: 11-26-62 Date, Map: 11-2-64  
Photo No.: 4-1516, 1517 Scale: 1" = 400'