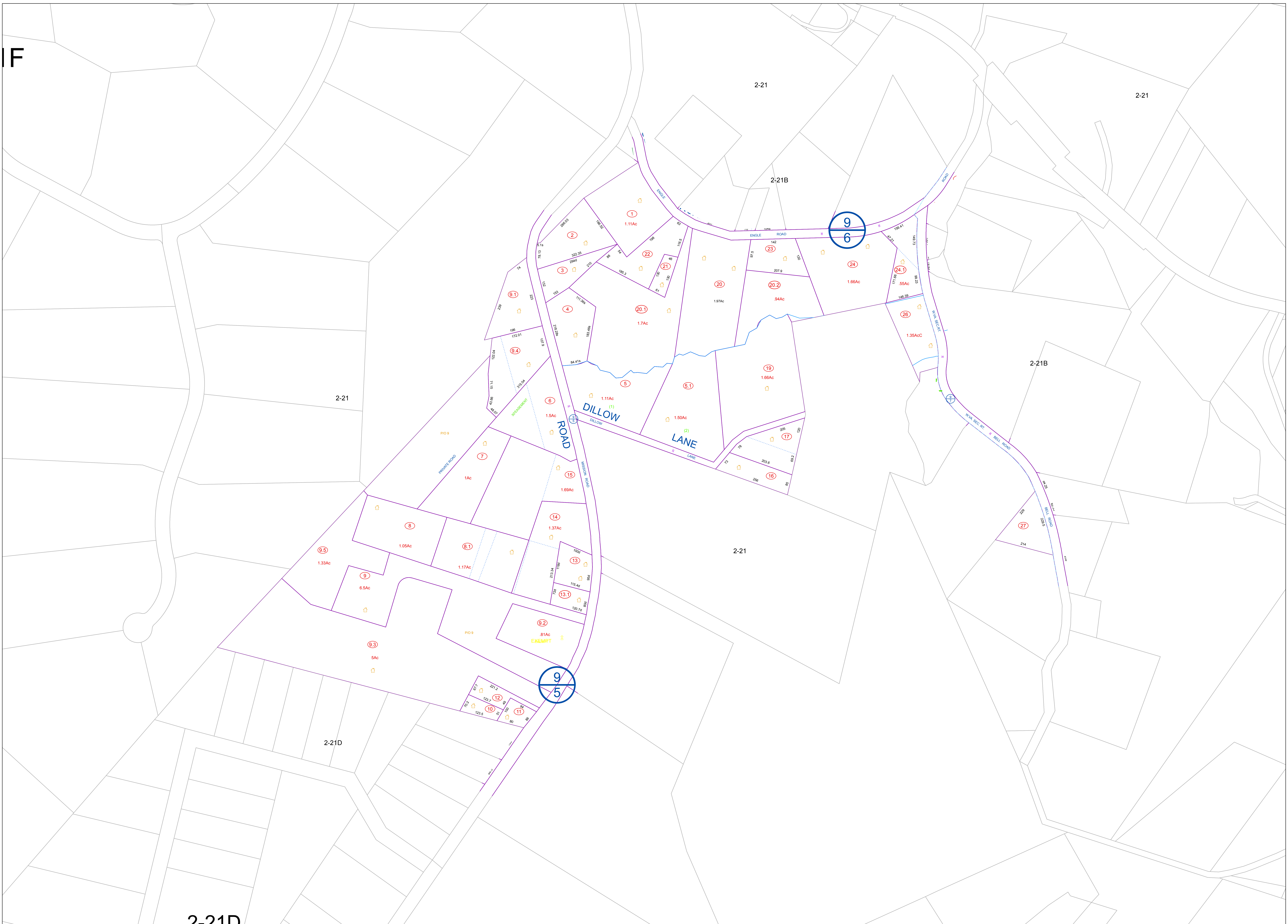
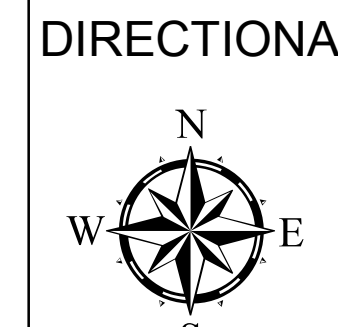


IF



**FOR TAX PURPOSES ONLY**  
 PREPARED BY  
**JEFFERSON COUNTY ASSESSOR'S OFFICE**  
 Note: Maps are updated constantly by the mapper however, maps are only printed at the beginning of the fiscal year.



**NOTICE:** All tax maps created under the provisions of reappraisal legislation are the property of the State of West Virginia and the Jefferson County Assessor's Office and the reproduction, copying, distribution or sale of such tax maps or any copies thereof, in any format, without written permission is prohibited by law.

**LEGEND**

	PROPERTY LINE
	CORPORATION LINE
	DISTRICT LINE
	COUNTY LINE
	STREAM
	EASEMENT
	ORIGINAL LOT LINE
	RAILROAD

	DEED LOT NUMBER	(15)
	TAX PARCEL NUMBER	(9)
	IMPROVEMENT	(1)
	PP MOBILE HOME	(2)
	DISTRICT NUMBER	(1)
	SCALED DIMENSION	(s)

**REVISIONS**  
 REVISIONS OUTGREW THIS SPACE AND ARE NOW MAINTAINED IN A DATABASE

**KEY MAP**

21	21	21
21	21A	21
21	21	21

**COUNTY OF JEFFERSON**  
**OFFICE OF THE ASSESSOR**  
**CHARLES TOWN, WV**  
**ASSESSOR: Angela Banks**  
**MAPPING SPECIALIST: Victoria Myers**

**CHARLES TOWN DISTRICT**  
**DISTRICT 2**  
**MAP 21A**  
 Date, Aerial Photography: 12/31/1962  
 Photo No : 09  
**Date Printed: 8/2/2016**  
 Date Map Created: 04/23/1963  
 Scale 1"=100'