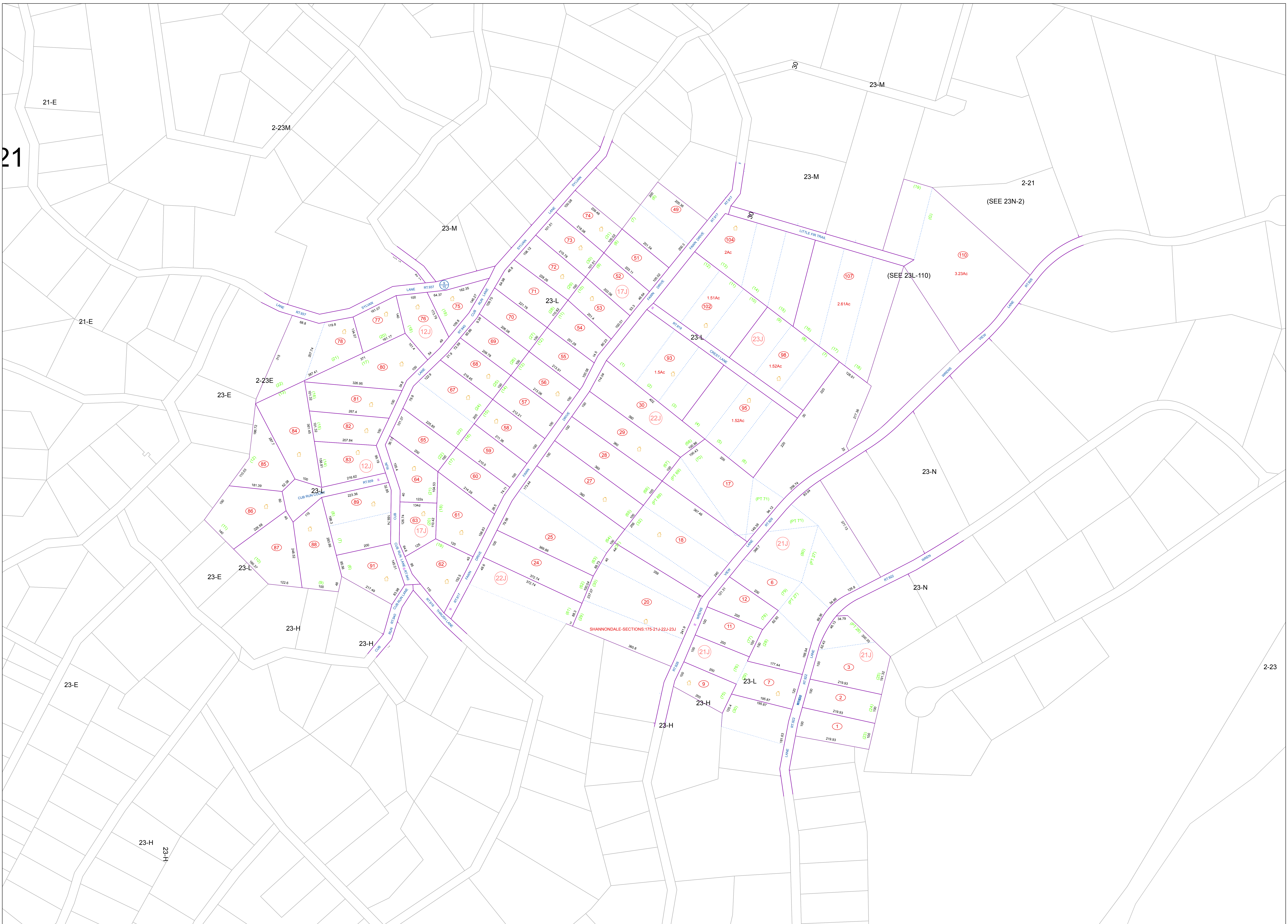
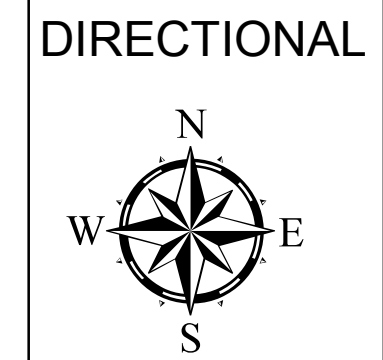


21



FOR TAX PURPOSES ONLY
 PREPARED BY
JEFFERSON COUNTY ASSESSOR'S OFFICE
 Note: Maps are updated constantly by the mapper however, maps are only printed at the beginning of the fiscal year.



NOTICE: All tax maps created under the provisions of reappraisal legislation are the property of the State of West Virginia and the Jefferson County Assessor's Office and the reproduction, copying, distribution or sale of such tax maps or any copies thereof, in any format, without written permission is prohibited by law.

LEGEND

	PROPERTY LINE
	CORPORATION LINE
	DISTRICT LINE
	COUNTY LINE
	STREAM
	EASEMENT
	ORIGINAL LOT LINE
	RAILROAD

	DEED LOT NUMBER	(15)
	TAX PARCEL NUMBER	(15)
	IMPROVEMENT	(15)
	PP MOBILE HOME	(15)
	DISTRICT NUMBER	(15)
	SCALED DIMENSION	(15)

REVISIONS
 REVISIONS OUTGREW THIS SPACE AND ARE NOW MAINTAINED IN A DATABASE

KEY MAP

23M	23M	23N
23E	23L	23N
23H	23H	23N

COUNTY OF JEFFERSON
OFFICE OF THE ASSESSOR
CHARLES TOWN, WV
ASSESSOR: Angela Banks
MAPPING SPECIALIST: Victoria Myers

CHARLES TOWN DISTRICT
DISTRICT 2
MAP 23L
 Date, Aerial Photography: 12/31/1962
 Photo No :
 Date Printed: 8/2/2016
 Date Map Created: 04/23/1963
 Scale 1"=100'