

WILLIAM L. WILSON (FWY)

WILLIAM L. WILSON (FWY)
U.S. RT. 340

WILLIAM L. WILSON (FWY)

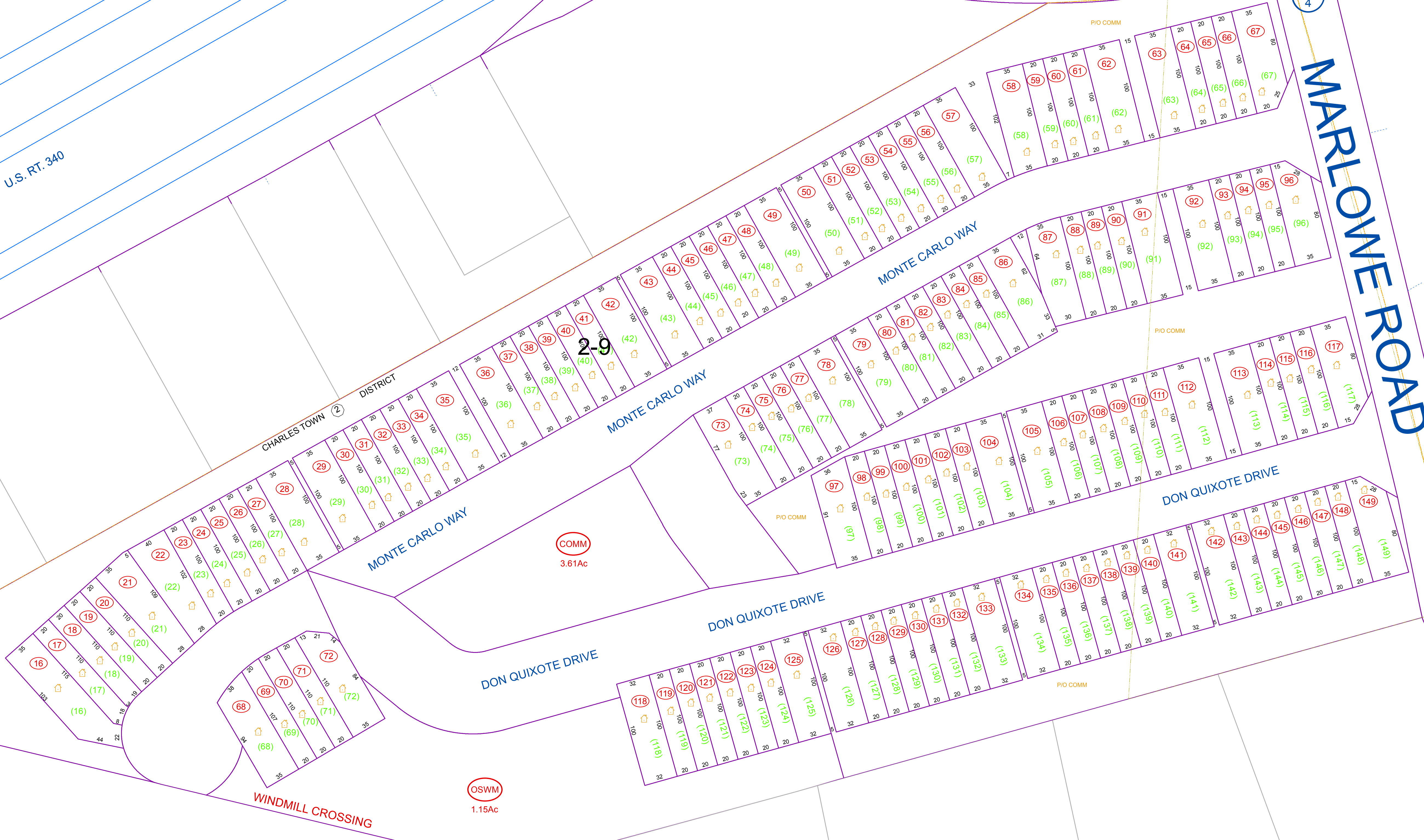
SOMERSET BLVD

340
4

MARLOWE ROAD

2-9

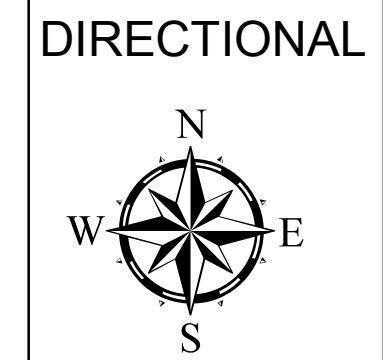
2-9A



CHARLES TOWN DISTRICT
CHARLES TOWN CORPORATION

FOR TAX PURPOSES ONLY
PREPARED BY
JEFFERSON COUNTY ASSESSOR'S OFFICE

Note: Maps are updated constantly by the mapper however, maps are only printed at the beginning of the fiscal year.



NOTICE: All tax maps created under the provisions of reappraisal legislation are the property of the State of West Virginia and the Jefferson County Assessor's Office and the reproduction, copying, distribution or sale of such tax maps or any copies thereof, in any format, without written permission is prohibited by law.

LEGEND

PROPERTY LINE	(15)
CORPORATION LINE	(16)
DISTRICT LINE	(17)
COUNTY LINE	(18)
STREAM	(19)
EASEMENT	(20)
ORIGINAL LOT LINE	(21)
RAILROAD	(22)

DEED LOT NUMBER	(15)
TAX PARCEL NUMBER	(16)
IMPROVEMENT	(17)
PP MOBILE HOME	(18)
DISTRICT NUMBER	(19)
SCALED DIMENSION	(20)

REVISIONS

REVISIONS OUTGREW THIS SPACE AND ARE NOW MAINTAINED IN A DATABASE

KEY MAP

9C
9 9A

COUNTY OF JEFFERSON
OFFICE OF THE ASSESSOR
CHARLES TOWN, WV
ASSESSOR: Angela Banks
MAPPING SPECIALIST: Victoria Myers

CHARLES TOWN DISTRICT
DISTRICT 2
MAP 9C

Date, Aerial Photography: 12/31/1962
Photo No : 48
Date Printed: 8/2/2016
Date Map Created: 04/23/1963
Scale 1"=50'