

2-13

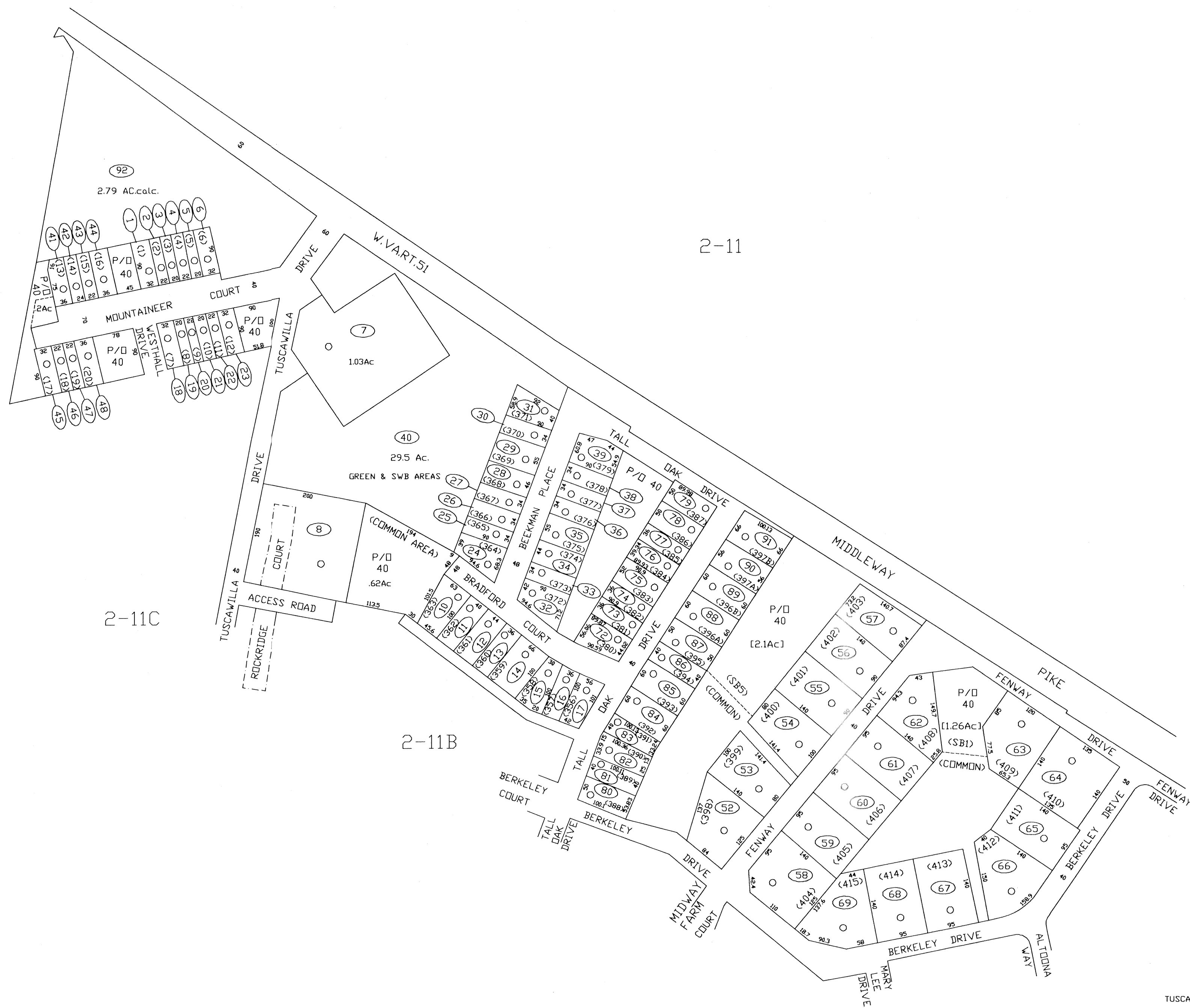
2-11

2-13A

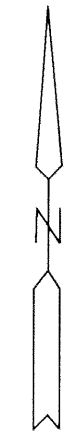
2-11C

2-11B

2-11B



TUSCAVILLA HILLS S.D.



FOR TAX PURPOSES ONLY
 PREPARED BY
JEFFERSON COUNTY ASSESSORS OFFICE
 Note: Maps are updated constantly by the mapper however, maps are printed only at the beginning of the fiscal year (July)

LEGEND	
PROPERTY LINE	—————
CENTER LINE	—————
CORPORATION LINE	—————
DISTRICT LINE	—————
COUNTY LINE	—————
STREAM	~~~~~
EASEMENT	- - - - -
ORIGINAL LOT LINE	-----
DEED LOT NUMBER	(33)
PARCEL OR INDEX NUMBER	(3)
IMPROVEMENT	○
RAILROAD	—+—+—+—
DISTRICT NUMBER	(2)
SCALED DIMENSION	5

REVISIONS
 Revisions outgrew this space and are now maintained in a database.

KEY MAP		
11	11	11
11C	11D	11B
11C	11B	11B

COUNTY OF JEFFERSON
 OFFICE OF ASSESSOR
 CHARLES TOWN, W. VA.

**CHARLES TOWN DISTRICT
 DISTRICT 2
 MAP NUMBER 11D**
 DATE, AERIAL PHOTOGRAPHY: 1962
 PHOTO NO: 68.69
 DATE, MAP: APRIL 23, 1963
 SCALE: 1"=100'