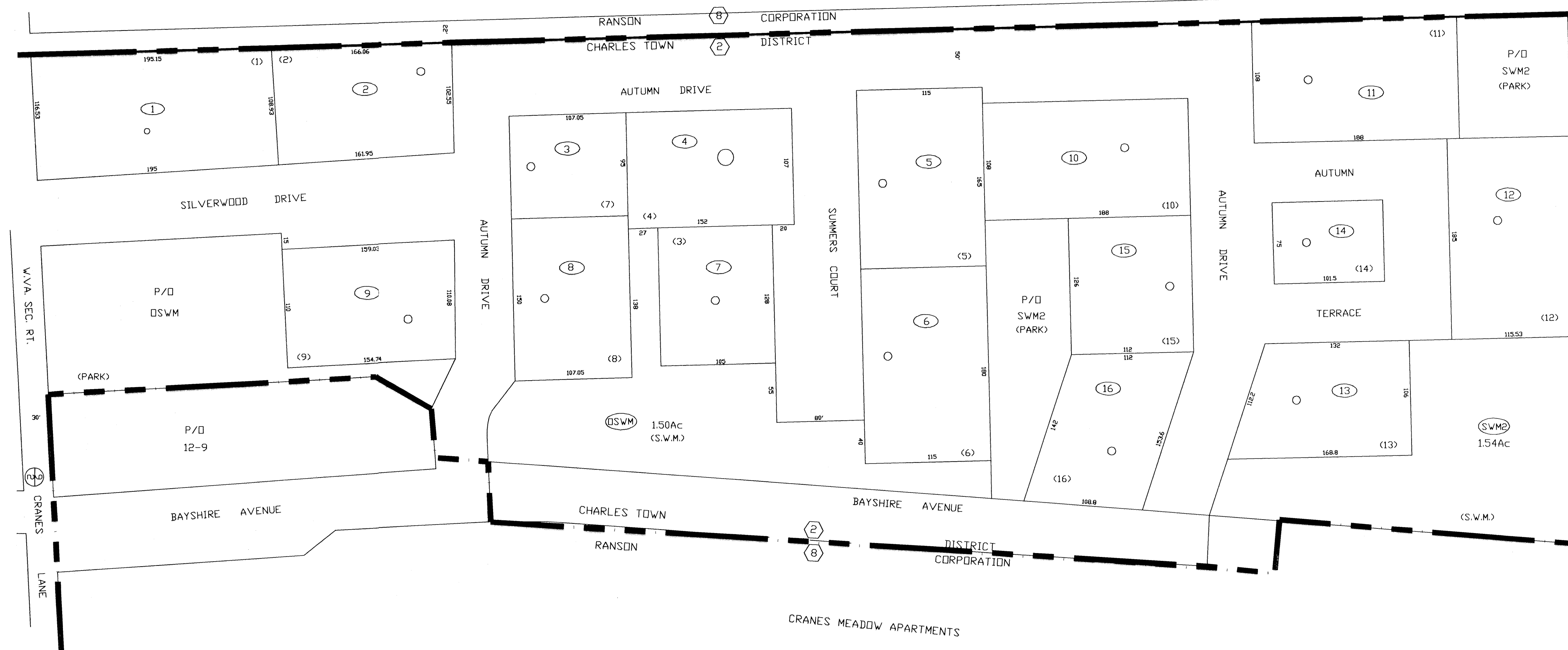


8-2

2-7



2-12

**FOR TAX PURPOSES ONLY**  
 PREPARED BY  
**JEFFERSON COUNTY ASSESSORS OFFICE**  
 Note: Maps are updated constantly by the mapper however, maps are printed only at the beginning of the fiscal year (July)

LEGEND	
PROPERTY LINE	—————
CENTER LINE	—————
CORPORATION LINE	—————
DISTRICT LINE	—————
COUNTY LINE	—————
STREAM	~~~~~
EASEMENT	—————
ORIGINAL LOT LINE	—————
DEED LOT NUMBER	(10)
PARCEL OR INDEX NUMBER	(10)
IMPROVEMENT	(10)
RAILROAD	—————
DISTRICT NUMBER	(2)
SCALED DIMENSION	S

**REVISIONS**  
 Revisions outgrew this space and are now maintained in a database.

KEY MAP	
12	12A
12	12

**COUNTY OF JEFFERSON**  
 OFFICE OF ASSESSOR  
 CHARLES TOWN, W. VA.

**CHARLES TOWN DISTRICT DISTRICT 2 MAP NUMBER 12A**  
 DATE, AERIAL PHOTOGRAPHY: 1962  
 PHOTO NO:  
 DATE, MAP: APRIL 23, 1963  
 SCALE: 1"=50'