

FOR TAX PURPOSES ONLY
 PREPARED BY
JEFFERSON COUNTY ASSESSORS OFFICE
 Note: Maps are updated constantly by the mapper however, maps are printed only at the beginning of the fiscal year (July)

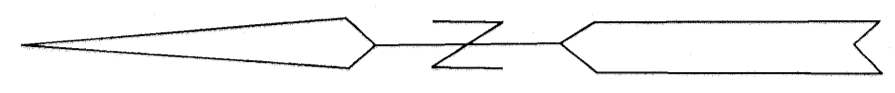
LEGEND	
PROPERTY LINE	—————
CENTER LINE	—————
CORPORATION LINE	—————
DISTRICT LINE	—————
COUNTY LINE	—————
STREAM	~~~~~
EASEMENT	—————
ORIGINAL LOT LINE	-----
DEED LOT NUMBER	(12)
PARCEL OR INDEX NUMBER	(85)
IMPROVEMENT	○
RAILROAD	—————
DISTRICT NUMBER	(2)
SCALED DIMENSION	5

REVISIONS
 Revisions outgrew this space and are now maintained in a database.

KEY MAP	
12	11
13	14

COUNTY OF JEFFERSON
 OFFICE OF ASSESSOR
 CHARLES TOWN, W. VA.

CHARLES TOWN DISTRICT DISTRICT 2 MAP NUMBER 13
 DATE, AERIAL PHOTOGRAPHY: 1962
 PHOTO NO: 87,89,113
 DATE, MAP: APRIL 23, 1963
 SCALE: 1"=400'



2-12

MIDDLEWAY PIKE
W.V. 607 51

2-11C

2-13A-3

2-13

P/D 11

2-13A-2

2-13A-2

1.3
11.12Ac
(PCL.B)
COMMON AREA

P/D 1.3
(PCL.C)
COMMON AREA

P/D-1.3



FOR TAX PURPOSES ONLY
PREPARED BY
JEFFERSON COUNTY ASSESSORS OFFICE

Note: Maps are updated constantly by the mapper however, maps are printed only at the beginning of the fiscal year (July)

LEGEND	
PROPERTY LINE	—————
CENTER LINE	—————
CORPORATION LINE	—————
DISTRICT LINE	—————
COUNTY LINE	—————
STREAM	~~~~~
EASEMENT	- - - - -
ORIGINAL LOT LINE	—————
DEED LOT NUMBER	(15)
PARCEL OR INDEX NUMBER	(2)
IMPROVEMENT	○
RAILROAD	—+—+—+—
DISTRICT NUMBER	(2)
SCALED DIMENSION	5

REVISIONS
Revisions outgrew this space and are now maintained in a database.

KEY MAP		
13	13	11
13	13A	11
14	14	14

COUNTY OF JEFFERSON
OFFICE OF ASSESSOR
CHARLES TOWN, W. VA.

CHARLES TOWN DISTRICT
DISTRICT 2
MAP NUMBER 13A-1
DATE, AERIAL PHOTOGRAPHY: 1962
PHOTO NO: 87,113
DATE, MAP: AUGUST, 1990
SCALE: 1"=100'



FOR TAX PURPOSES ONLY
 PREPARED BY
JEFFERSON COUNTY ASSESSORS OFFICE
 Note: Maps are updated constantly by the mapper however, maps are printed only at the beginning of the fiscal year (July)

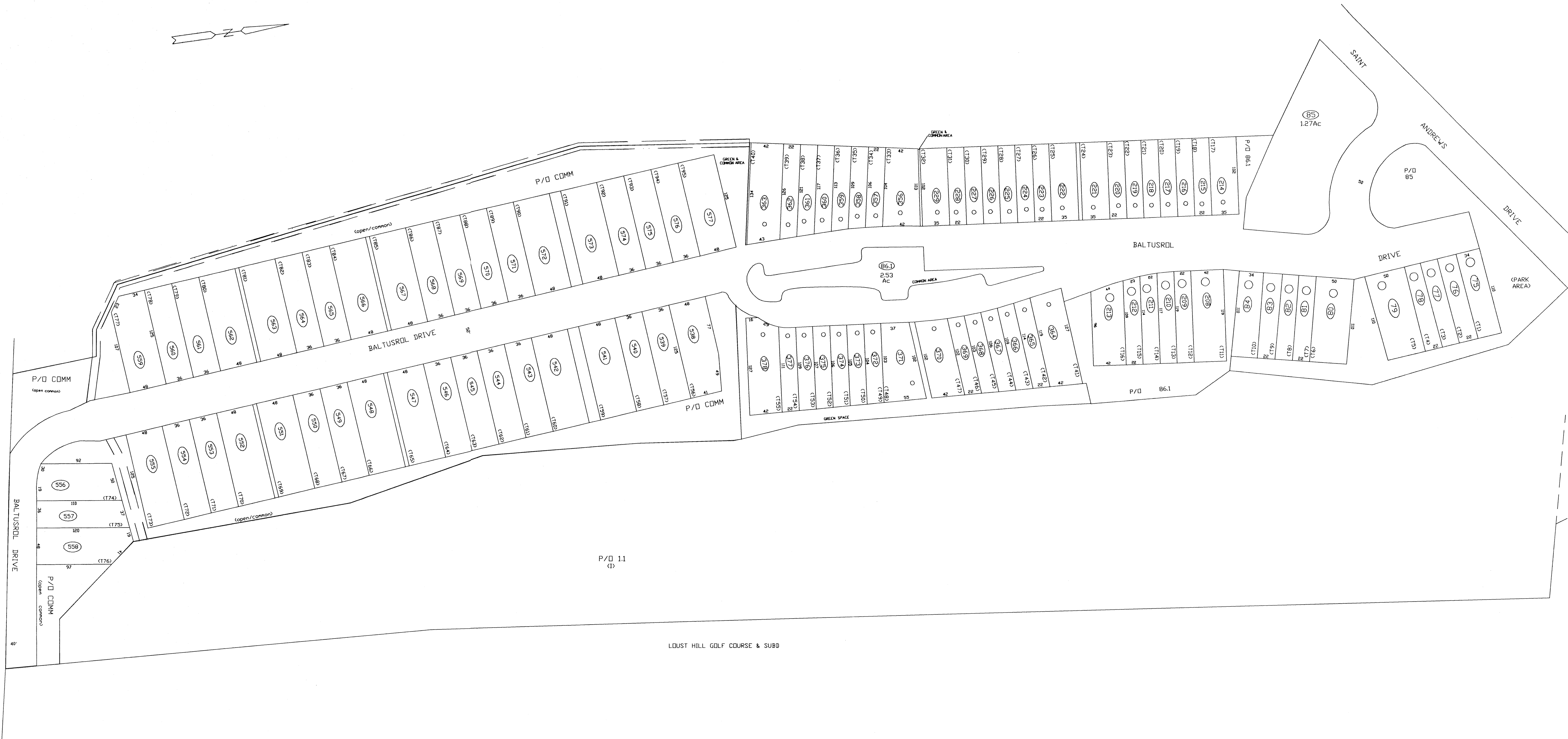
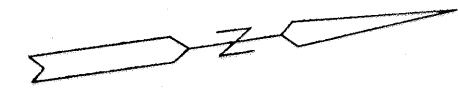
LEGEND	
PROPERTY LINE	—————
CENTER LINE	—————
CORPORATION LINE	—————
DISTRICT LINE	—————
COUNTY LINE	—————
STREAM	~~~~~
EASEMENT	—————
ORIGINAL LOT LINE	—————
DEED LOT NUMBER	(15)
PARCELS OR INDEX NUMBER	(15)
MARKING	(15)
RAILROAD	—————
DISTRICT NUMBER	(15)
SCALED DIMENSION	(15)

REVISIONS
 Revisions outgrew this space and are now maintained in a database.

KEY MAP		
13	13	11
13	13A	11
14	14	14

COUNTY OF JEFFERSON
 OFFICE OF ASSESSOR
 CHARLES TOWN, W. VA.

CHARLES TOWN DISTRICT DISTRICT 2
MAP NUMBER 13A-2
 DATE, AERIAL PHOTOGRAPHY: 1962
 PHOTO NO: 87,113
 DATE, MAP: APRIL 23, 1963
 SCALE: 1"=100'



LOUST HILL GOLF COURSE & SUBD

FOR TAX PURPOSES ONLY
 PREPARED BY
JEFFERSON COUNTY ASSESSORS OFFICE
 Note: Maps are updated constantly by the mapper however, maps are printed only at the beginning of the fiscal year (July)

LEGEND	
PROPERTY LINE	—————
CENTER LINE	—————
CORPORATION LINE	—————
DISTRICT LINE	—————
COUNTY LINE	—————
STREAM	~~~~~
EASEMENT	—————
ORIGINAL LOT LINE	—————
DEED LOT NUMBER	(123)
PARCEL OR INDEX NUMBER	(123)
IMPROVEMENT	(123)
RAILROAD	(123)
DISTRICT NUMBER	(123)
SCALED DIMENSION	(123)

REVISIONS
 Revisions outgrew this space and are now maintained in a database.

KEY MAP		
13	13	11
13	13A	11
14	14	14

COUNTY OF JEFFERSON
 OFFICE OF ASSESSOR
 CHARLES TOWN, W. VA.

CHARLES TOWN DISTRICT DISTRICT 2
MAP NUMBER 13A-3
 DATE, AERIAL PHOTOGRAPHY: 1962
 PHOTO NO: 87,113
 DATE, MAP: AUGUST, 1990
 SCALE: 1"=200'



P/D 1.1

MATCH LINE SHEET 13A-2

MATCH LINE SHEET 13A-2

2-11A

LOUST HILL GOLF COURSE & SUBD

7.56Ac

2-14

P/D 1.1

3-11-2

FOR TAX PURPOSES ONLY
 PREPARED BY
JEFFERSON COUNTY ASSESSORS OFFICE
 Note: Maps are updated constantly by the mapper however, maps are printed only at the beginning of the fiscal year (July)

LEGEND	
PROPERTY LINE	———
CENTER LINE	———
CORPORATION LINE	———
DISTRICT LINE	———
COUNTY LINE	———
STREAM	~~~~~
EASEMENT	———
ORIGINAL LOT LINE	———
DEED LOT NUMBER	(123)
PARCEL OR INDEX NUMBER	(123)
IMPROVEMENT	○
RAILROAD	———
DISTRICT NUMBER	(2)
SCALED DIMENSION	5

REVISIONS
Revisions outgrew this space and are now maintained in a database.

KEY MAP
13 13 11
13 13A 11
14 14 14

COUNTY OF JEFFERSON
 OFFICE OF ASSESSOR
 CHARLES TOWN, W. VA.

CHARLES TOWN DISTRICT DISTRICT 2
MAP NUMBER 13A-4
 DATE, AERIAL PHOTOGRAPHY: 1962
 PHOTO NO: 87,113
 DATE, MAP: AUGUST, 1990
 SCALE: 1"=200'