

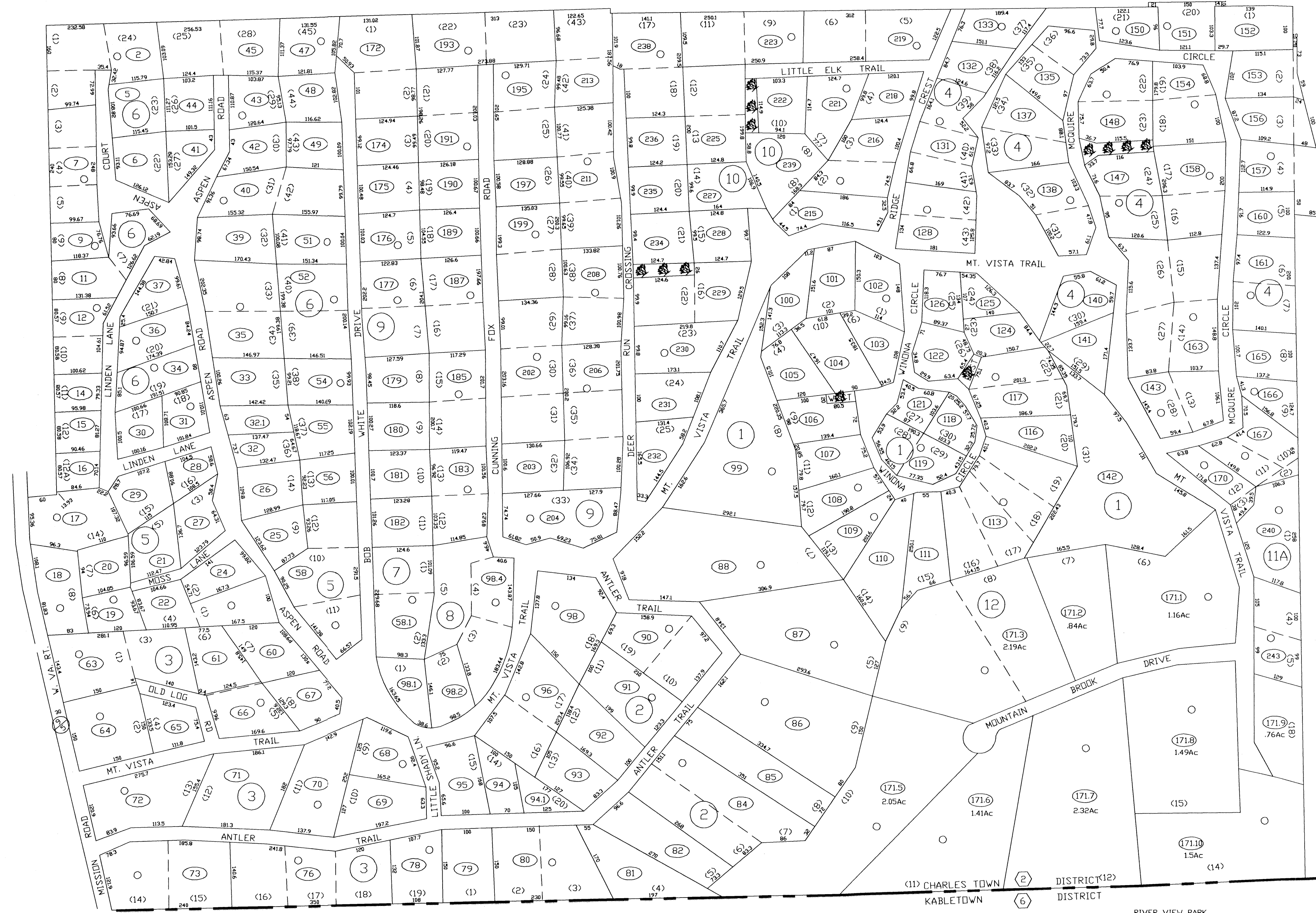
23-F

23-B

23-B

23-D

2-23



6-6

6-6A

FOR TAX PURPOSES ONLY
 PREPARED BY
JEFFERSON COUNTY ASSESSORS OFFICE

Note: Maps are updated constantly by the mapper however, maps are printed only at the beginning of the fiscal year (July)

LEGEND	
PROPERTY LINE	ORIGINAL LOT LINE
CENTER LINE	DEED LOT NUMBER
CORPORATION LINE	PARCEL OR INDEX NUMBER
DISTRICT LINE	IMPROVEMENT
COUNTY LINE	RAILROAD
STREAM	DISTRICT NUMBER
EASEMENT	SCALED DIMENSION

REVISIONS
Revisions outgrew this space and are now maintained in a database.

KEY MAP
23 23 23
23 23C 23
23 23 23

COUNTY OF JEFFERSON
 OFFICE OF ASSESSOR
 CHARLES TOWN, W. VA.

CHARLES TOWN DISTRICT
DISTRICT 2
MAP NUMBER 23C

DATE, AERIAL PHOTOGRAPHY: 1962
 PHOTO NO: 07
 DATE, MAP: APRIL 23, 1963
 SCALE: 1"=100'