

2-23

23-H

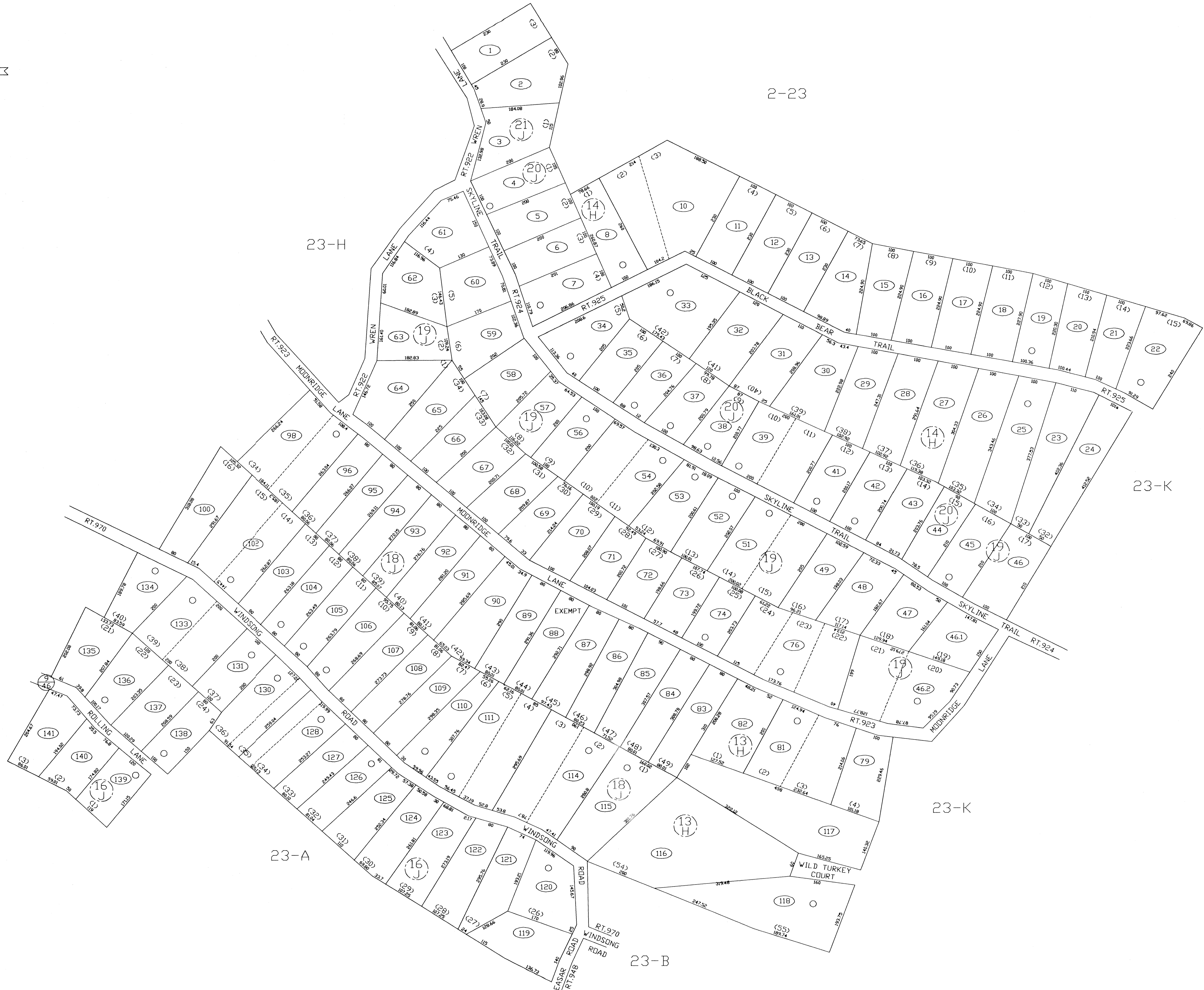
23-H

23-K

23-K

23-A

23-B



FOR TAX PURPOSES ONLY
 PREPARED BY
JEFFERSON COUNTY ASSESSORS OFFICE

Note: Maps are updated constantly by the mapper however, maps are printed only at the beginning of the fiscal year (July)

LEGEND	
PROPERTY LINE	———
CENTER LINE	— · — · —
CORPORATION LINE	- - - - -
DISTRICT LINE	- · - · -
COUNTY LINE	- - - - -
STREAM	~~~~~
EASEMENT	- - - - -
ORIGINAL LOT LINE	— · — · —
DEED LOT NUMBER	(15)
PARCEL OR INDEX NUMBER	(2)
IMPROVEMENT	(3)
RAILROAD	—+—+—
DISTRICT NUMBER	(2)
SCALED DIMENSION	S

REVISIONS
 Revisions outgrow this space and are now maintained in a database.

KEY MAP		
23E	23H	23
23A	23G	23
23B	23K	23

COUNTY OF JEFFERSON
 OFFICE OF ASSESSOR
 CHARLES TOWN, W. VA.

CHARLES TOWN DISTRICT
DISTRICT 2
MAP NUMBER 23G
 DATE, AERIAL PHOTOGRAPHY: 1962
 PHOTO NO:
 DATE, MAP: APRIL 23, 1963
 SCALE: 1"=100'