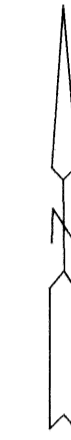
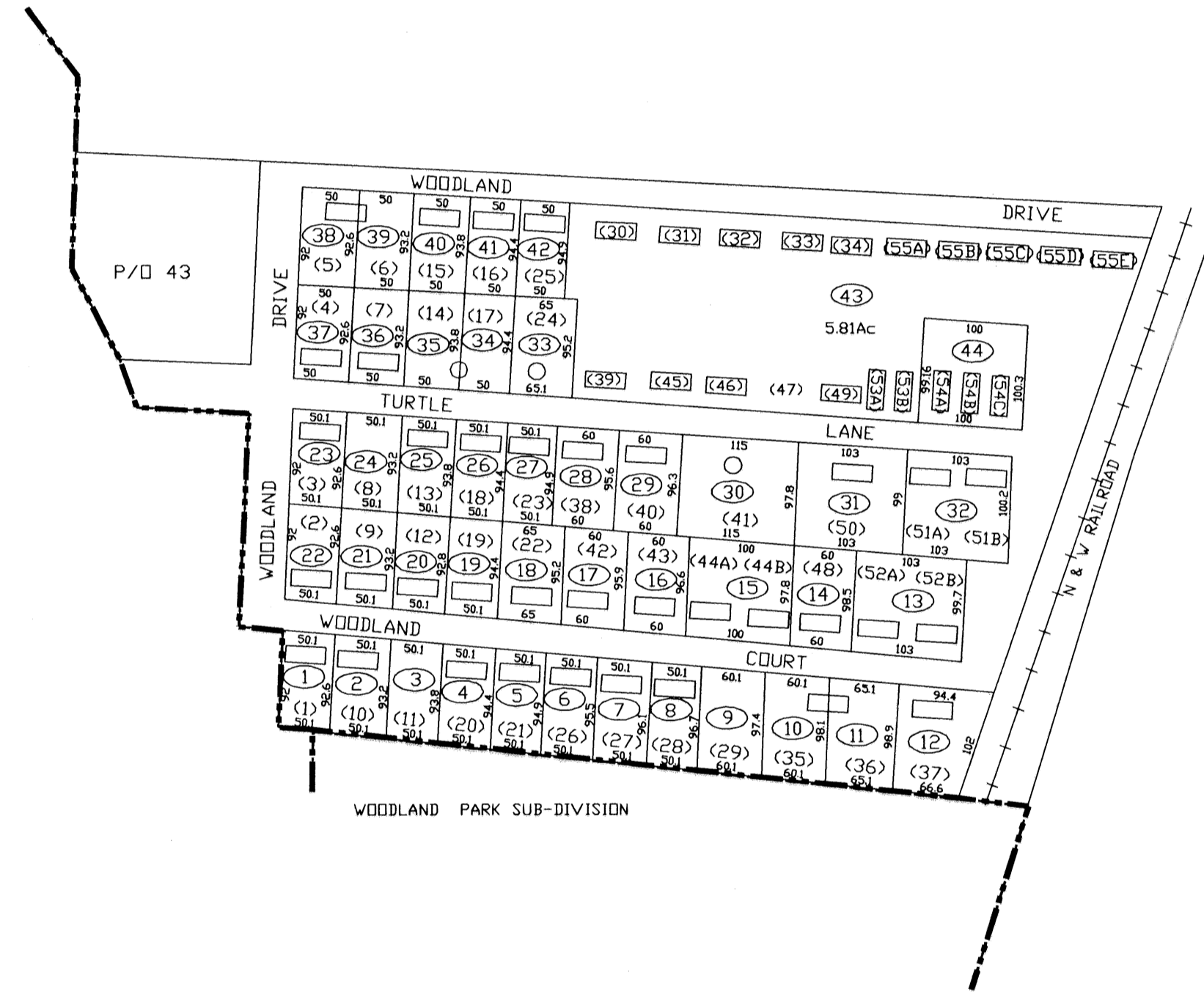


2-2



2-5



2-4

2-4

<p><b>FOR TAX PURPOSES ONLY</b></p> <p>PREPARED BY</p> <p><b>JEFFERSON COUNTY ASSESSORS OFFICE</b></p> <p>Note: Maps are updated constantly by the mapper however, maps are printed only at the beginning of the fiscal year (July)</p>	<p><b>LEGEND</b></p> <p>PROPERTY LINE —————</p> <p>CENTER LINE —————</p> <p>CORPORATION LINE - - - - -</p> <p>DISTRICT LINE - - - - -</p> <p>COUNTY LINE - - - - -</p> <p>STREAM - - - - -</p> <p>EASEMENT - - - - -</p> <p>ORIGINAL LOT LINE - - - - -</p> <p>DEED LOT NUMBER (15)</p> <p>PARCEL OR INDEX NUMBER (15)</p> <p>IMPROVEMENT (15)</p> <p>RAILROAD (15)</p> <p>DISTRICT NUMBER (15)</p> <p>SCALED DIMENSION (15)</p>		<p><b>REVISIONS</b></p> <p>Revisions outgrew this space and are now maintained in a database.</p>	<p><b>KEY MAP</b></p> <table border="1"> <tr><td>2</td><td>2</td><td>4</td></tr> <tr><td>5</td><td>4A</td><td>4</td></tr> <tr><td>5</td><td>4</td><td>4</td></tr> </table>	2	2	4	5	4A	4	5	4	4	<p><b>COUNTY OF JEFFERSON</b></p> <p>OFFICE OF ASSESSOR</p> <p>CHARLES TOWN, W. VA.</p>	<p><b>CHARLES TOWN DISTRICT</b></p> <p>DISTRICT 2</p> <p>MAP NUMBER 4A</p> <p>DATE, AERIAL PHOTOGRAPHY: 1962</p> <p>PHOTO NO: 72,93</p> <p>DATE, MAP: APRIL 23, 1963</p> <p>SCALE: 1"=100'</p>
	2	2	4												
5	4A	4													
5	4	4													