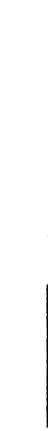
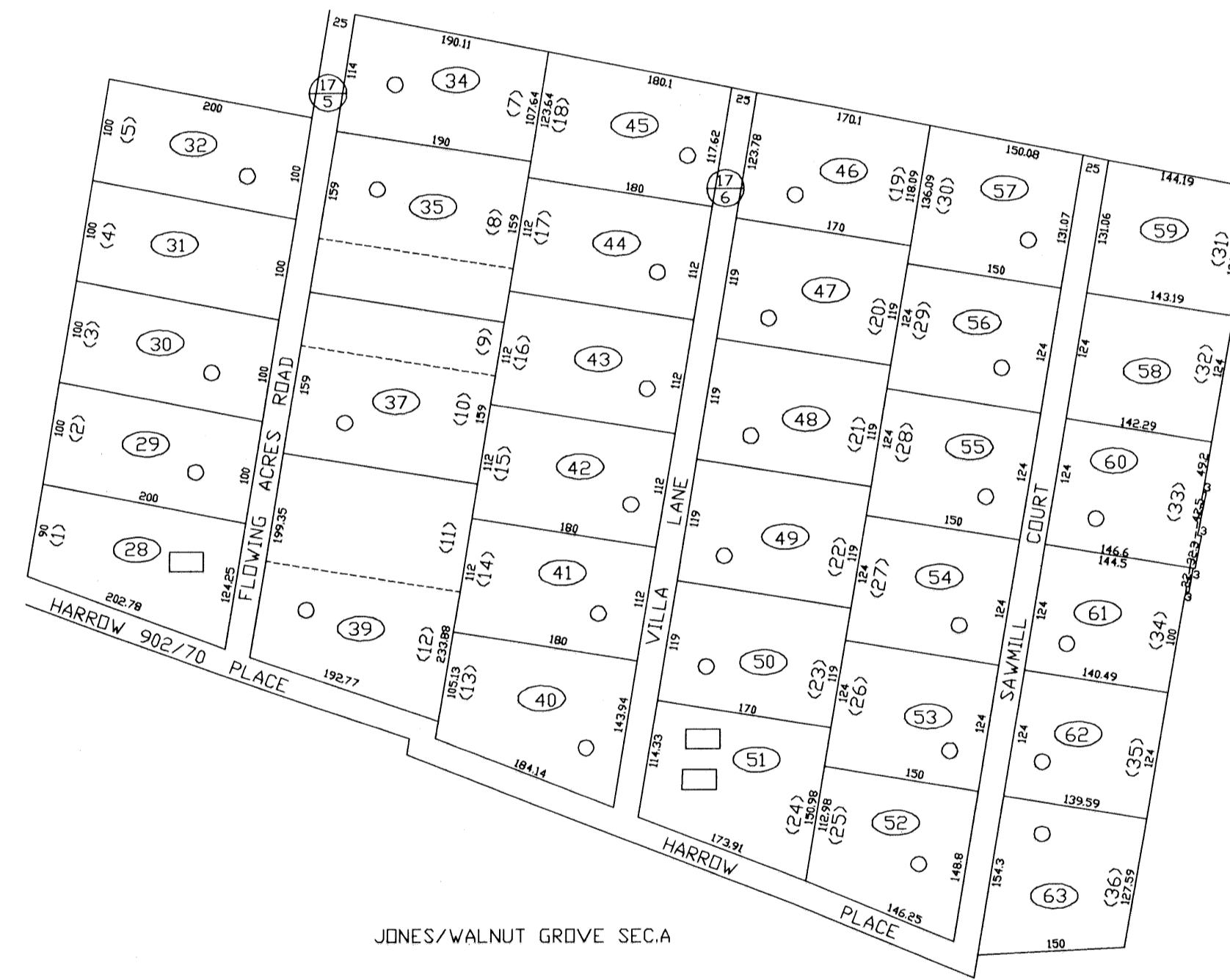


2-8



2-8



2-4F

2-8

**FOR TAX PURPOSES ONLY**  
 PREPARED BY  
**JEFFERSON COUNTY ASSESSORS OFFICE**

Note: Maps are updated constantly by the mapper however, maps are printed only at the beginning of the fiscal year (July)

**LEGEND**

PROPERTY LINE	—————	ORIGINAL LOT LINE	-----
CENTER LINE	—————	DEED LOT NUMBER	(15)
CORPORATION LINE	-----	PARCEL OR INDEX NUMBER	(16)
DISTRICT LINE	-----	IMPROVEMENT	(17)
COUNTY LINE	-----	RAILROAD	(18)
STREAM	~~~~~	DISTRICT NUMBER	(19)
EASEMENT	-----	SCALED DIMENSION	(20)

**REVISIONS**

Revisions outgrew this space and are now maintained in a database.

**KEY MAP**

8	8	
8	8A-2	
8	8	8

**COUNTY OF JEFFERSON**

OFFICE OF ASSESSOR  
 CHARLES TOWN, W. VA.

**CHARLES TOWN DISTRICT  
 DISTRICT 2  
 MAP NUMBER 8A-2**

DATE, AERIAL PHOTOGRAPHY: 1962  
 PHOTO NO: 70

DATE, MAP: APRIL 23, 1963  
 SCALE: 1"=100'