

3-11

3-11A

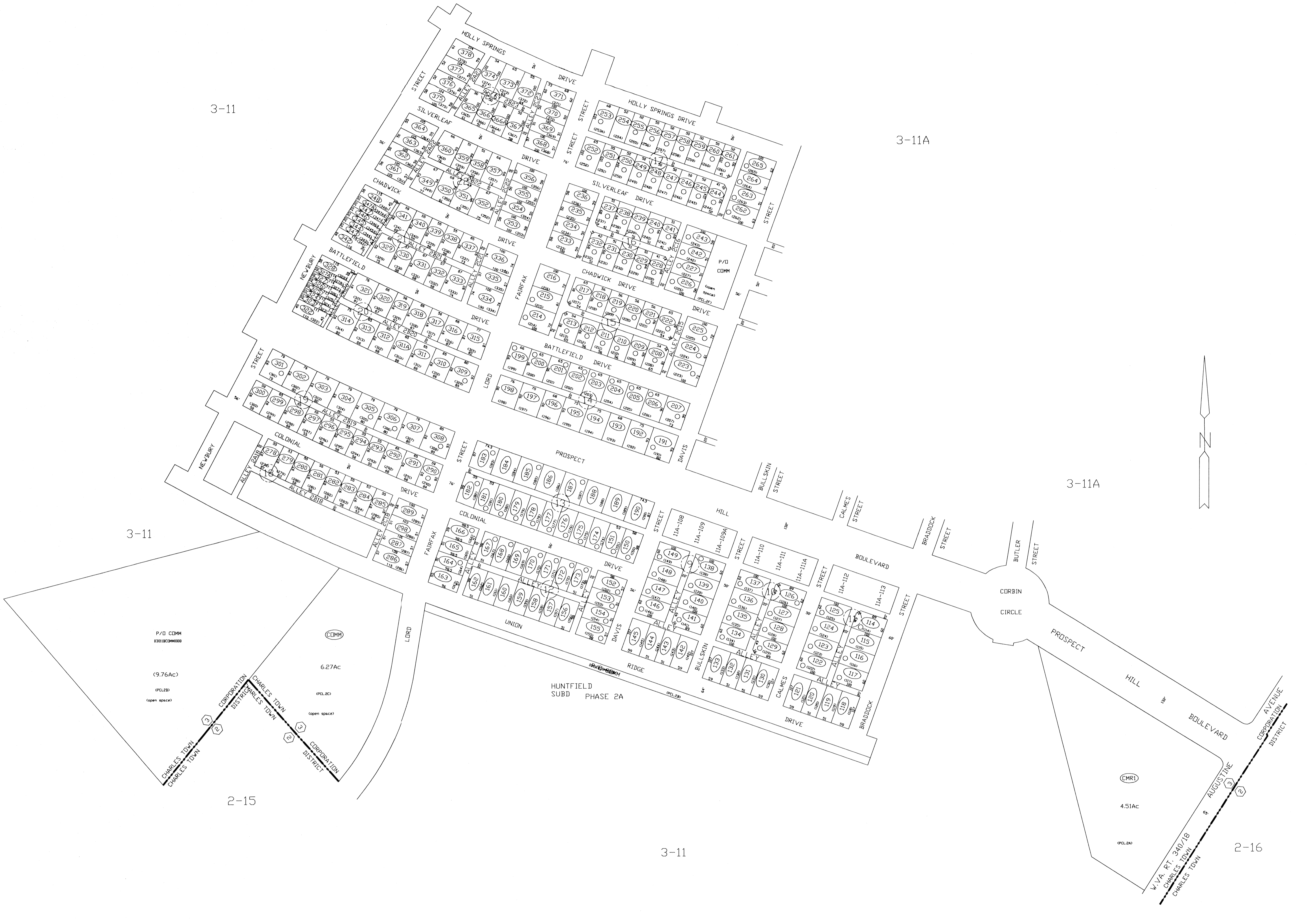
3-11A

3-11

2-15

3-11

2-16



FOR TAX PURPOSES ONLY
 PREPARED BY
JEFFERSON COUNTY ASSESSORS OFFICE
 Note: Maps are updated constantly by the mapper however, maps are printed only at the beginning of the fiscal year (July)

LEGEND	
PROPERTY LINE	ORIGINAL LOT LINE
CENTER LINE	DEED LOT NUMBER
CORPORATION LINE	PARCEL OR INDEX NUMBER
DISTRICT LINE	IMPROVEMENT
COUNTY LINE	RAILROAD
STREAM	DISTRICT NUMBER
EASEMENT	SCALED DIMENSION

REVISIONS
 Revisions outgrew this space and are now maintained in a database.

KEY MAP		
11	11	11
11	11B	11
11	11	11

COUNTY OF JEFFERSON
 OFFICE OF ASSESSOR
 CHARLES TOWN, W. VA.

CHARLES TOWN CORPORATION
DISTRICT 3
MAP NUMBER 11B
 DATE, AERIAL PHOTOGRAPHY: 1962
 PHOTO NO: _____
 DATE, MAP: APRIL 23, 1963
 SCALE: 1"=100'