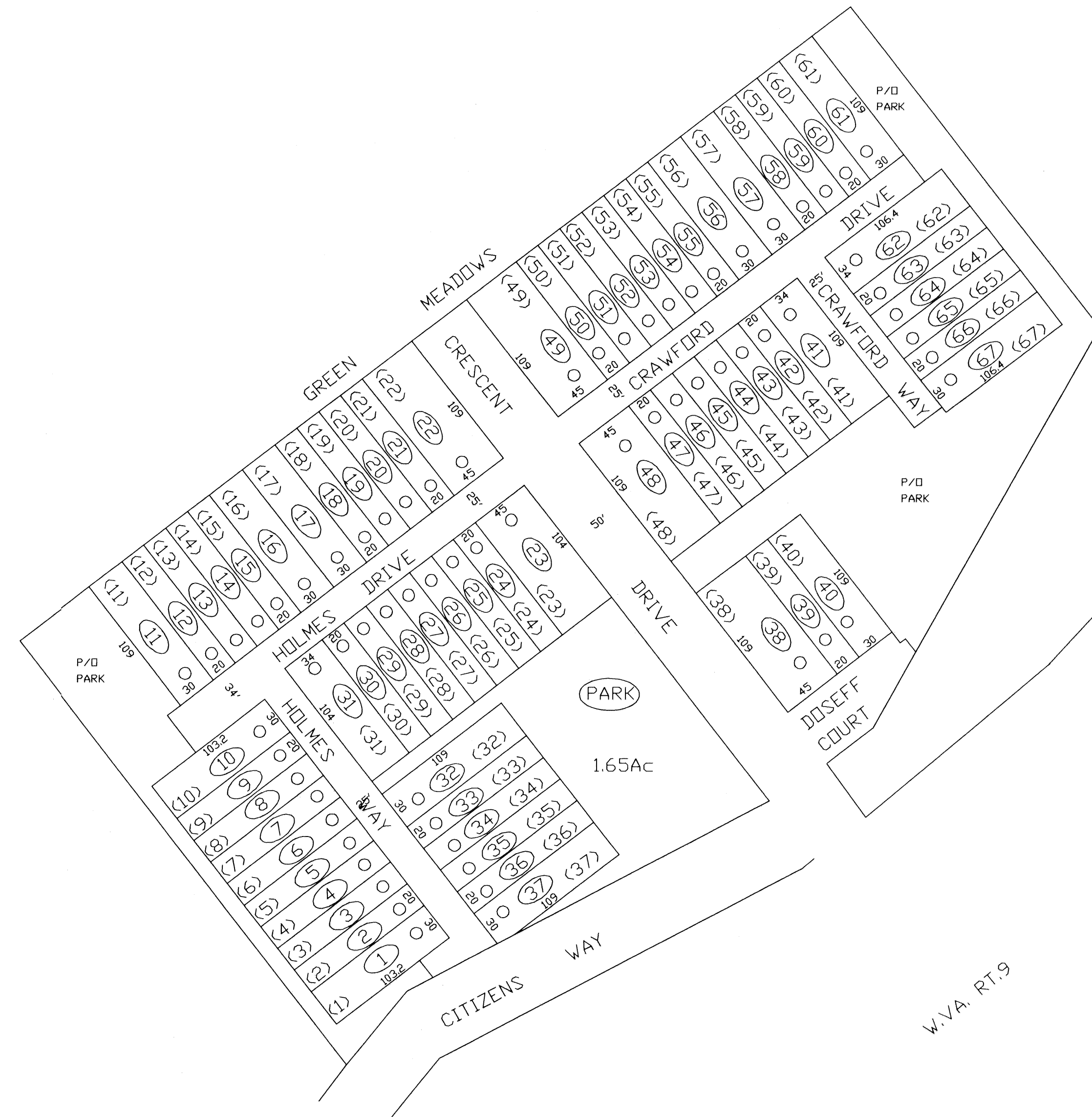


3-9

3-9



3-9

3-9

3-9B

FOR TAX PURPOSES ONLY
 PREPARED BY
JEFFERSON COUNTY ASSESSORS OFFICE

Note: Maps are updated constantly by the mapper however, maps are printed only at the beginning of the fiscal year (July)

LEGEND

PROPERTY LINE	—————	ORIGINAL LOT LINE	-----
CENTER LINE	—————	DEED LOT NUMBER	①
CORPORATION LINE	-----	PARCEL OR INDEX NUMBER	②
DISTRICT LINE	-----	IMPROVEMENT	○
COUNTY LINE	-----	RAILROAD	—+—+—+—
STREAM	~~~~~	DISTRICT NUMBER	②
EASEMENT	-----	SCALED DIMENSION	S

REVISIONS

Revisions outgrew this space and are now maintained in a database.

KEY MAP

9	9	9
9	9C	9
9	9	9

COUNTY OF JEFFERSON

OFFICE OF ASSESSOR
 CHARLES TOWN, W. VA.

CHARLES TOWN CORPORATION
 DISTRICT 3
 MAP NUMBER 9C

DATE, AERIAL PHOTOGRAPHY: 1962
 PHOTO NO:
 DATE, MAP: APRIL 23, 1963
 SCALE: 1"=50'