

4-12D

4-12G

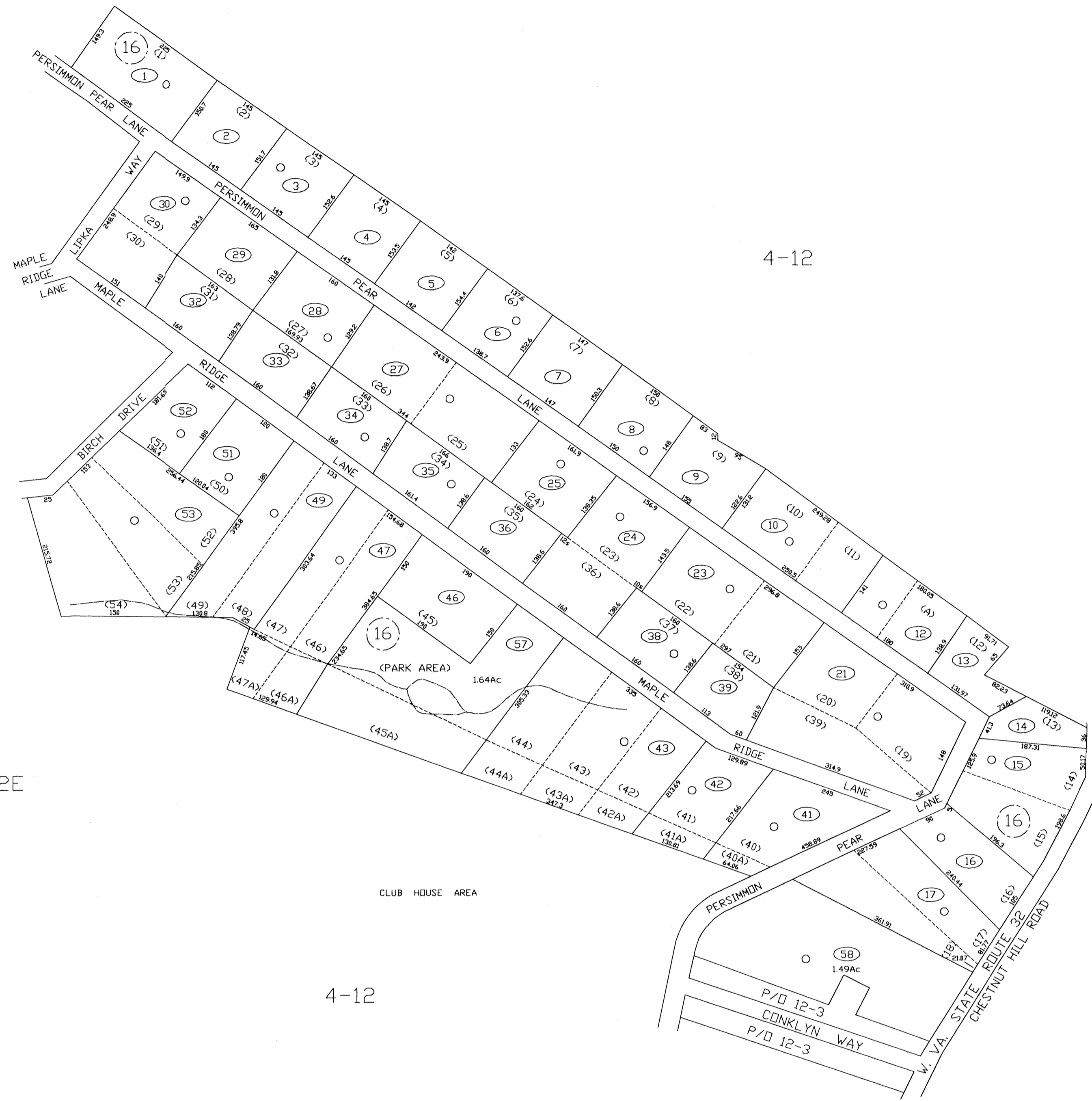
4-12E

4-12

4-12C

4-12

4-12



CLUB HOUSE AREA

BLUE RIDGE ACRES SEC. 16

FOR TAX PURPOSES ONLY
 PREPARED BY
JEFFERSON COUNTY ASSESSORS OFFICE

Note: Maps are updated constantly by the mapper however, maps are printed only at the beginning of the fiscal year (July)

LEGEND

PROPERTY LINE	—————	ORIGINAL LOT LINE	-----
CENTER LINE	—————	DEED LOT NUMBER	(15)
CORPORATION LINE	-----	PARCEL OR INDEX NUMBER	(16)
DISTRICT LINE	-----	IMPROVEMENT	(17)
COUNTY LINE	-----	RAILROAD	(18)
STREAM	~~~~~	DISTRICT NUMBER	(19)
EASEMENT	-----	SCALED DIMENSION	S

REVISIONS

Revisions outgrew this space and are now maintained in a database.

KEY MAP

12G	12	12
12G	12H	12
12E	12	12

COUNTY OF JEFFERSON
 OFFICE OF ASSESSOR
 CHARLES TOWN, W. VA.

HARPERS FERRY DISTRICT
DISTRICT 4
MAP NUMBER 12H

DATE, AERIAL PHOTOGRAPHY: 1962
 PHOTO NO: 13,29,31

DATE, MAP: JULY 2, 1974
 SCALE: 1"=100'