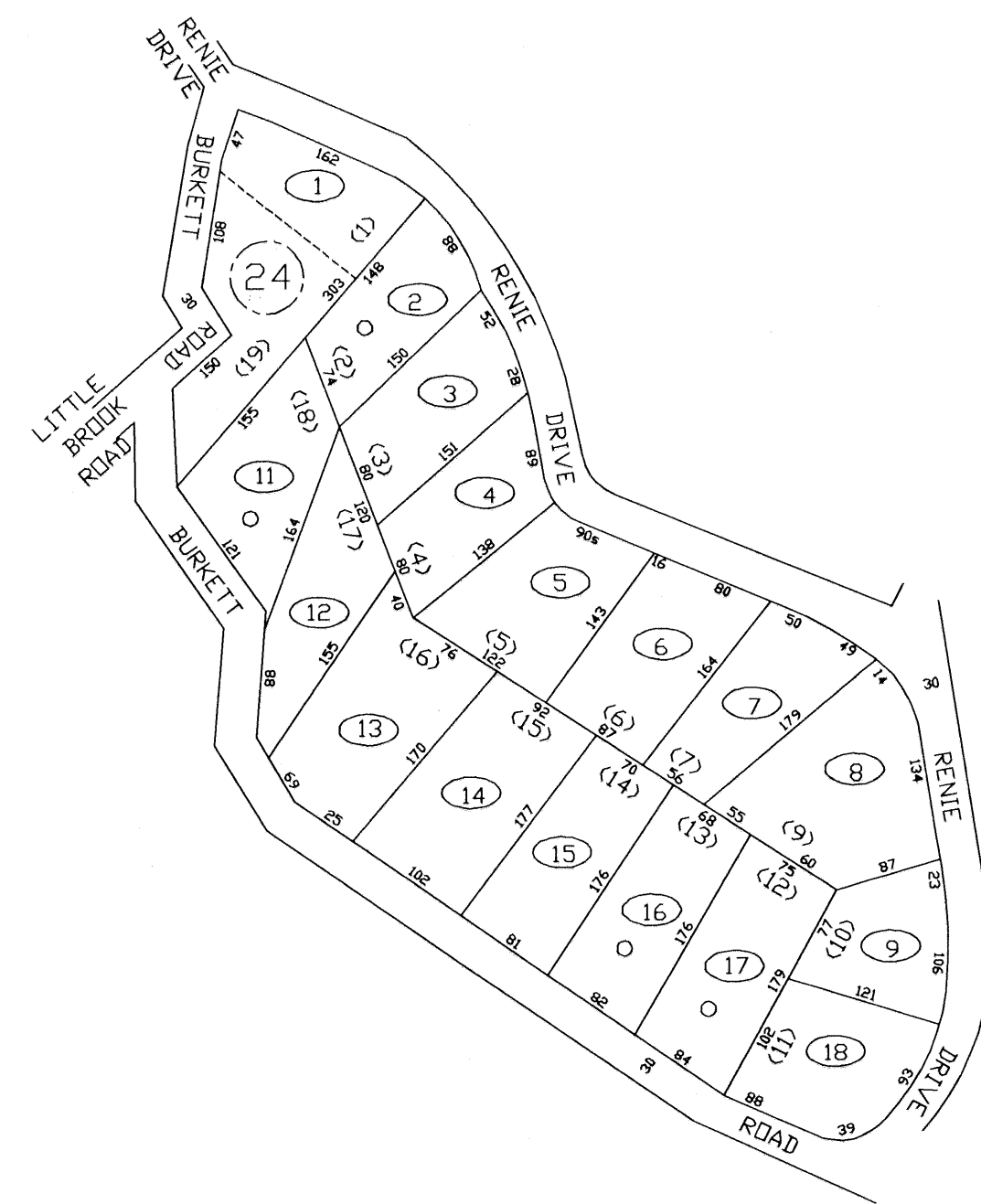


4-13M

4-13N



4-13A

4-13B-1

KEYES FERRY ACRES SECTION 24



FOR TAX PURPOSES ONLY
 PREPARED BY
JEFFERSON COUNTY ASSESSORS OFFICE
 Note: Maps are updated constantly by the mapper however, maps are printed only at the beginning of the fiscal year (July)

LEGEND	
PROPERTY LINE	—————
CENTER LINE	—————
CORPORATION LINE	—————
DISTRICT LINE	—————
COUNTY LINE	—————
STREAM	~~~~~
EASEMENT	- - - - -
ORIGINAL LOT LINE	-----
DEED LOT NUMBER	(12)
PARCEL OR INDEX NUMBER	(12)
IMPROVEMENT	○
RAILROAD	—+—+—+—
DISTRICT NUMBER	(2)
SCALED DIMENSION	5

REVISIONS
 Revisions outgrew this space and are now maintained in a database.

KEY MAP	
13M	13N
13A	13P
13A	13A

COUNTY OF JEFFERSON
 OFFICE OF ASSESSOR
 CHARLES TOWN, W. VA.

HARPERS FERRY DISTRICT
DISTRICT 4
MAP NUMBER 13P
 DATE, AERIAL PHOTOGRAPHY: 1962 DATE, MAP: JULY 18, 1973
 PHOTO NO: SCALE: 1"=100'