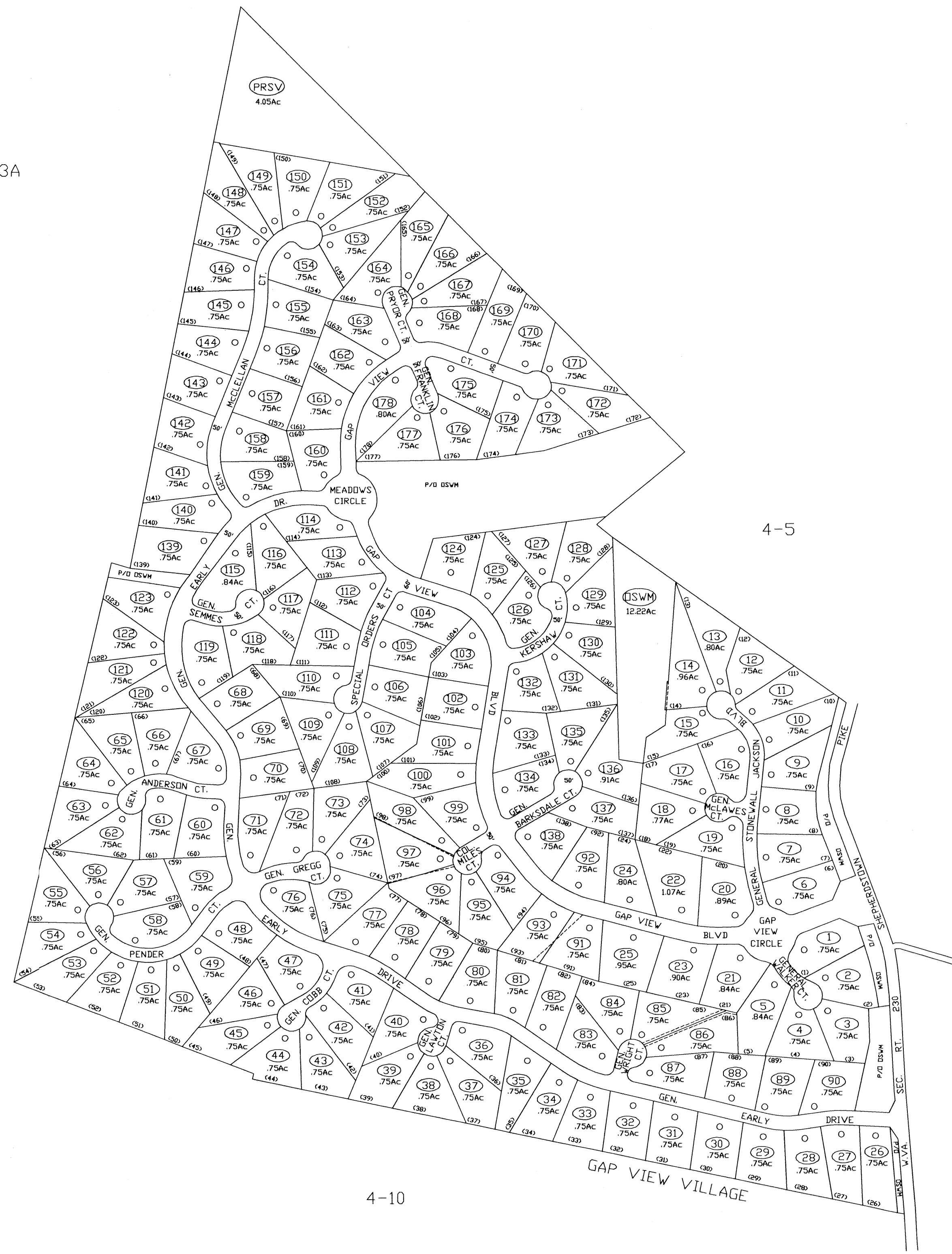


4-5A

2-2-3A



4-5

4-10

4-5

4-10

FOR TAX PURPOSES ONLY
 PREPARED BY
JEFFERSON COUNTY ASSESSORS OFFICE

Note: Maps are updated constantly by the mapper however, maps are printed only at the beginning of the fiscal year (July)

LEGEND

PROPERTY LINE	—————	ORIGINAL LOT LINE	-----
CENTER LINE	- - - - -	DEED LOT NUMBER	(15)
CORPORATION LINE	-----	PARCEL OR INDEX NUMBER	(16)
DISTRICT LINE	- - - - -	IMPROVEMENT	○
COUNTY LINE	-----	RAILROAD	——+——
STREAM	~~~~~	DISTRICT NUMBER	(2)
EASEMENT	- - - - -	SCALED DIMENSION	S

REVISIONS

Revisions outgrow this space and are now maintained in a database.

KEY MAP

5A	5
10	5D 5
10 10	5

COUNTY OF JEFFERSON
 OFFICE OF ASSESSOR
 CHARLES TOWN, W. VA.

HARPERS FERRY DISTRICT
DISTRICT 4
MAP NUMBER 5D

DATE, AERIAL PHOTOGRAPHY: 1982
 PHOTO NO: 87,113
 DATE, MAP: AUGUST, 1990
 SCALE: 1"=200'