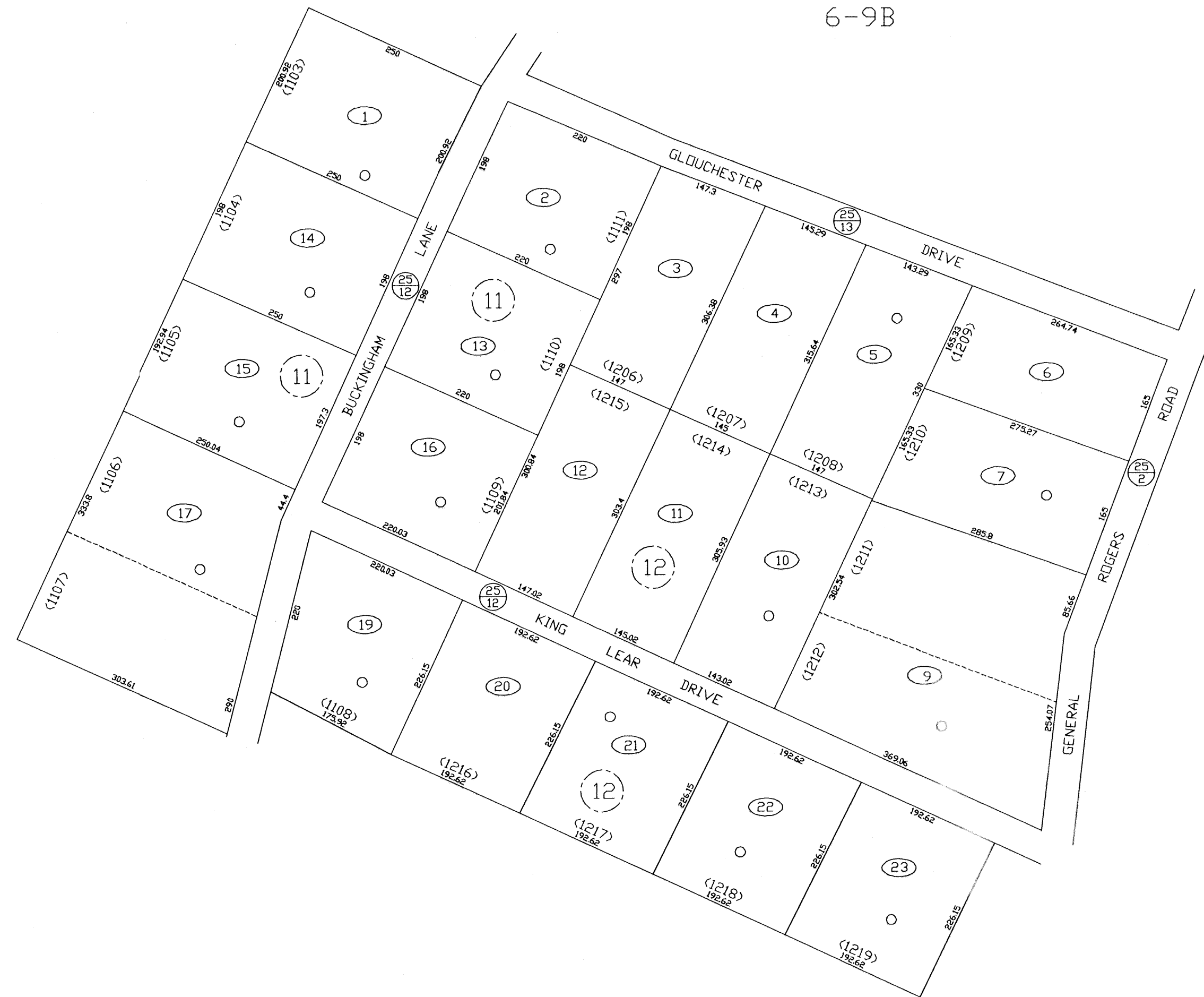
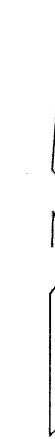


6-9

6-9B



6-9



6-9

AVON-BEND SECTIONS 11-12

FOR TAX PURPOSES ONLY
 PREPARED BY
JEFFERSON COUNTY ASSESSORS OFFICE
 Note: Maps are updated constantly by the mapper however, maps are printed only at the beginning of the fiscal year (July)

LEGEND	
PROPERTY LINE	—————
CENTER LINE	—————
COMPOSITION LINE	—————
DISTRICT LINE	—————
COUNTY LINE	—————
STREAM	~~~~~
EASEMENT	- - - - -
ORIGINAL LOT LINE	—————
DEED LOT NUMBER	(11)
PARCEL OR INDEX NUMBER	(11)
IMPROVEMENT	○
RAILROAD	—+—+—+—
DISTRICT NUMBER	(11)
SCALED DIMENSION	S

REVISIONS
 Revisions outgrew this space and are now maintained in a database.

KEY MAP	
9B	
9C	

COUNTY OF JEFFERSON
 OFFICE OF ASSESSOR
 CHARLES TOWN, W. VA.

**KABLETOWN DISTRICT
 DISTRICT 6
 MAP NUMBER 9C**
 DATE, AERIAL PHOTOGRAPHY: 1962 DATE, MAP: NOVEMBER 6, 1972
 PHOTO NO: SCALE: 1"=100'