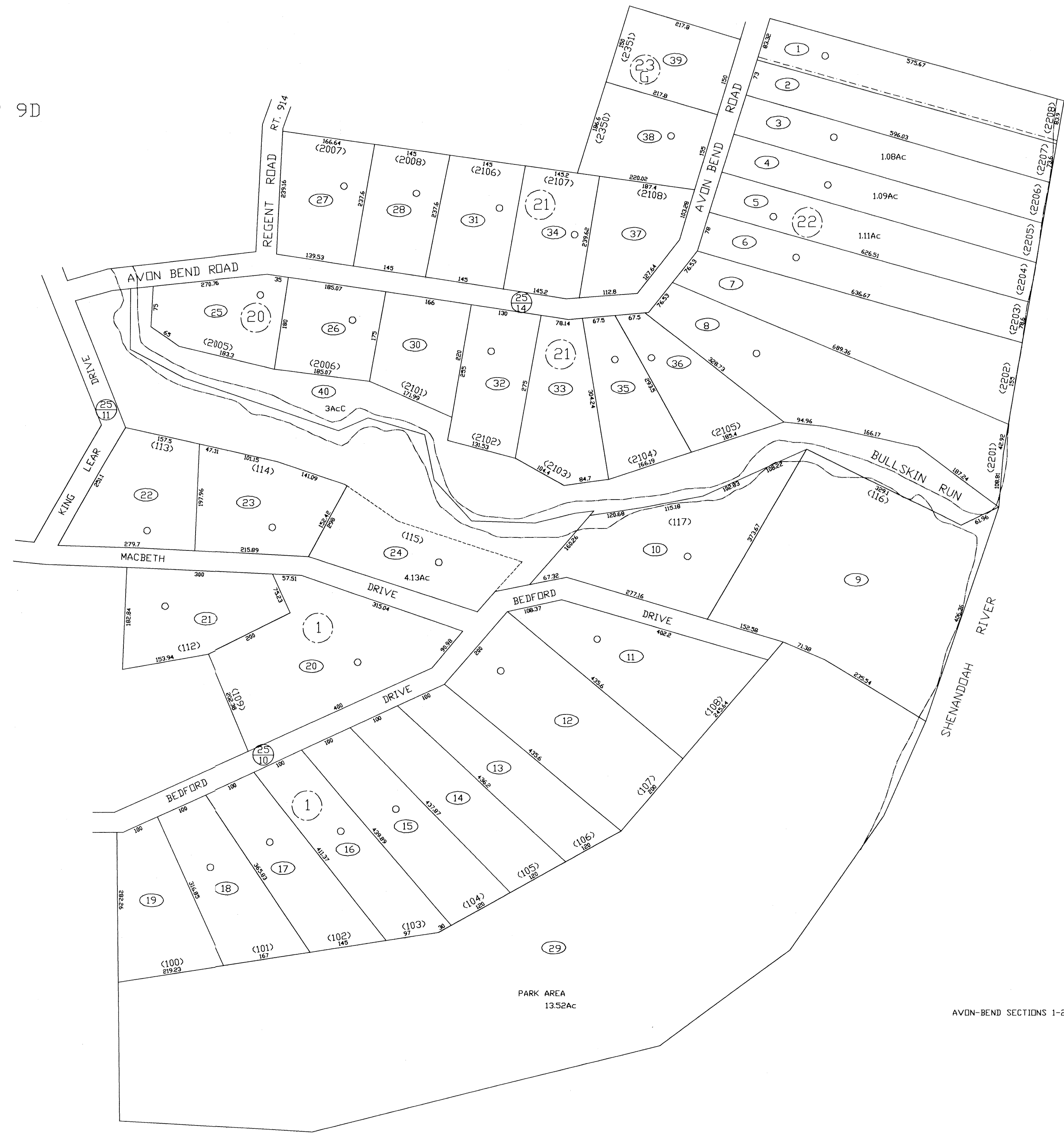


SEE MAP 9G

SEE MAP 9D

SEE MAP 9E



AVON-BEND SECTIONS 1-20-21-22-23G

FOR TAX PURPOSES ONLY
 PREPARED BY
JEFFERSON COUNTY ASSESSORS OFFICE
 Note: Maps are updated constantly by the mapper however, maps are printed only at the beginning of the fiscal year (July)

LEGEND	
PROPERTY LINE	—————
CENTER LINE	—————
CORPORATION LINE	—————
DISTRICT LINE	—————
COUNTY LINE	—————
STREAM	~~~~~
EASEMENT	- - - - -
ORIGINAL LOT LINE	-----
DEED LOT NUMBER	(15)
PARCEL OR INDEX NUMBER	(2)
IMPROVEMENT	○
RAILROAD	—+—+—+—
DISTRICT NUMBER	(2)
SCALED DIMENSION	S

REVISIONS
 Revisions outgrow this space and are now maintained in a database.

KEY MAP	
9G	+
9E	+
9F	+

COUNTY OF JEFFERSON
 OFFICE OF ASSESSOR
 CHARLES TOWN, W. VA.

KABLETOWN DISTRICT
DISTRICT 6
MAP NUMBER 9F
 DATE, AERIAL PHOTOGRAPHY: 1982 DATE, MAP: NOVEMBER 6, 1972
 PHOTO NO: SCALE: 1"=100'