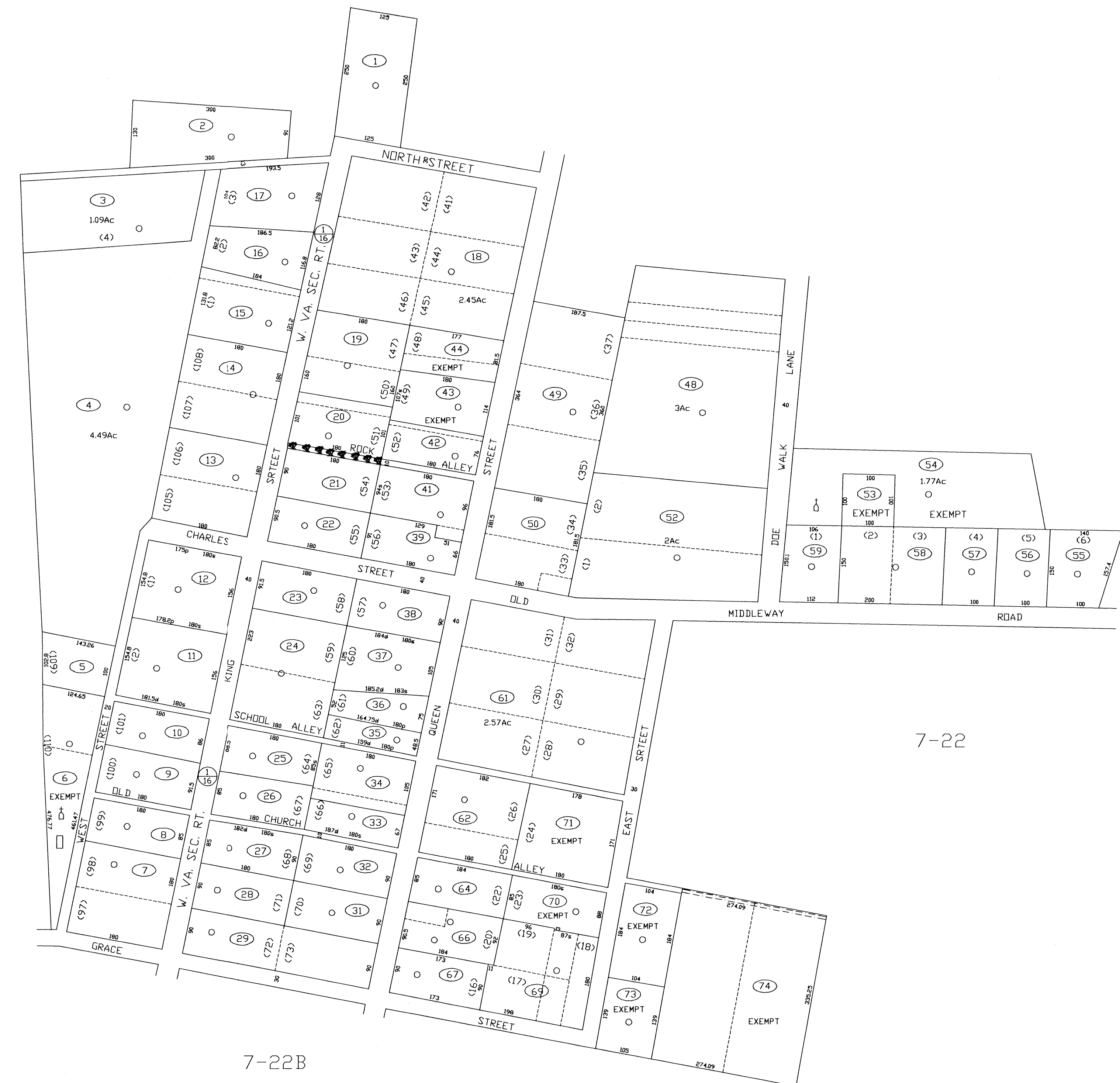


7-22

7-22



7-22

7-22B

**FOR TAX PURPOSES ONLY**  
 PREPARED BY  
**JEFFERSON COUNTY ASSESSORS OFFICE**  
 Note: Maps are updated constantly by the mapper however, maps are printed only at the beginning of the fiscal year (July)

LEGEND	
PROPERTY LINE	—————
CENTER LINE	—————
CORPORATION LINE	—————
DISTRICT LINE	—————
COUNTY LINE	—————
STREAM	~~~~~
EASEMENT	- - - - -
ORIGINAL LOT LINE	----- (15)
DEED LOT NUMBER	(15)
PARCEL OR INDEX NUMBER	(15)
IMPROVEMENT	(15)
RAILROAD	—————
DISTRICT NUMBER	(15)
SCALED DIMENSION	15

**REVISIONS**  
 Revisions outgrew this space and are now maintained in a database.

KEY MAP		
22	22	22
22	22A	22
22	22B	22

**COUNTY OF JEFFERSON**  
 OFFICE OF ASSESSOR  
 CHARLES TOWN, W. VA.

**MIDDLEWAY DISTRICT  
 DISTRICT 7  
 MAP NUMBER 22A**  
 DATE, AERIAL PHOTOGRAPHY: 1962  
 PHOTO NO: 156  
 DATE, MAP: APRIL 23, 1963  
 SCALE: 1"=100'